

THE PENNANT

PENOLA

Phone: 08 8741 8170 Trades and Classifieds: 1300 666 808

\$2.00 Inc. GST

Bendigo Bank give back


PAGE 2

Former residents unite


PAGE 5

Penola High School students graduate


PAGE 14

Four-page TV Guide


INSIDE



Coonawarra Vignerons Cup is back!

Start searching for those headpieces, the Coonawarra Vignerons Cup is back!

Officially launching last week, the event, which is a highlight in Penola's racing calendar, is back on, after a two year hiatus.

Read more page 30

Heidi Guyett with the coveted Coonawarra Vignerons Cup.

Shop in Penola

Look local for shopping this festive season.

President of the Riddoch Business and Community Association and owner of Koonara in Penola has urged locals to look at the businesses in Penola for their gifts this holiday season.

"When people shop local, there's such a multiplier effect for the whole community, by shopping and supporting local businesses," she said,

"There's such a spin off for everybody, and obviously we've had tough times, we had CO-

VID and the weather so it's so important to support your local businesses.

In order to get everyone looking local, The RBCA will be hosting Late Night Shopping in Penola on November 30.

"Quite a few of the businesses are staying open late to encourage everyone to get organised for Christmas," she said.

"There'll be specials on great food options.

"It's a way to shop leisurely and have a good food night out. "Bring your friends, it'll be great. there will be festive cheer and get every-

one in Christmas mode."

"You can come and have a good night while you're doing it, have some nice food.

"You don't have to spend hours trawling the internet for what you want, you can touch and feel and see what you want."

There will be a bus available from Mount Gambier and Millicent for only \$10.

THE RBCA is promoting holiday spirit in other ways as well, with their stuffed Santa competition on again for the final time.

"We're encouraging people to enter this year,

Mrs Reschke said. "This is the last year we're going to do it as a Stuffed Santa competition.

"We're going to change our Christmas competition next year, so this is a chance for businesses or individuals to bring out their favourite exhibit from the past or go out with a bang create something they like.

"It's a great tourism feature for the region, so many people come to come and see them, it's brings in the visitors and creates an interest for people.

Continued page 3



Livestock & Property

Real network Accredited Member

49 CHURCH ST, PENOLA
(08) 8737 2695
RLA44072

TO BE OFFERED ON AuctionsPlus

Friday 25th November 2022
A/C DF & M CLEVES 'ARDNO'

EU ACCREDITED & PCAS ELIGIBLE

HEREFORD STEERS	ANGUS STEERS	BLACK BALDY STEERS
54 - 372.8kg	25 - 372.4kg	40 - 336.3kg
83 - 322.5kg	46 - 329.8kg	25 - 263.3kg
74 - 273.2kg	25 - 262.9kg	
25 - 221.7kg		
74 - 321.6kg		
73 - 278.7kg		

All Yard Weaned on the 14th & 15th November. March/April drop.

Outstanding calves which represent the best genetics possible and excellent temperament.



Contact: Darren Maney: 0428 849 101, Sam Burgess 0439 674 781 or Hayden Lambert 0448 452 006

5000 HEAD Tuesday, 29th November 2022:
In the Paradoo Prime Genetic Ewe Lamb Sale
ewe lambs
Paradoo Prime 2200
Manyondah Pastoral 1800
Amity Point 100
Rob Handbury, TDC 0429 131 186
Penola Pastoral 500
Sam Hill, TDC 0421 822 058
All Ewes Lambs are Gudair Vaccinated.



UPCOMING CLEARING SALE

A/C PS & JA MUECKE
Thursday 15th December
2022 9:30am (SA time)

"Woodebo"
1318 Charcutt Rd, Coles SA
FULL LIST & PHOTOS TO COME

NCA NOVEMBER STORE SALE

Thursday 24th Nov
10am (SA time)
1200 HEAD ON OFFER
Contact your local TDC agent for more info

NCA 3 DAY (THURS, FRI & SAT) DECEMBER CHRISTMAS CALF SALE

TDC WILL HAVE ON OFFER:

Steers - Thurs 1st @ 10am

SA & GE Smith *EU

260 Ang

Carcoola *EU

70 Ang

DJ & AM Galpin

40 Sim Ang X

30 Limo X

MP & JK Grosvenor *EU

45 Ang

JA Parker *EU

40 Ang

GB Estate

16 Sim Ang X

Weston Family Trust

15 Ang

Brinhot PTY LTD *EU

10

Heifers - Sat 3rd @ 9am

DJ & AM Galpin

27 Sim Ang X

27 Limo X

JA Parker *EU

20 Ang

Weston Family Trust

15 Ang

GB Estate

13 Sim Ang X

Brinhot PTY LTD *EU

9

INTERFACED ON

AuctionsPlus

WWW.TDCAGENTS.COM.AU

INSIDE

WEATHER	page 15
TV GUIDE.....	pages 16-19
PROPERTY	pages 20-21
PUZZLES	page 22
CLASSIFIEDS	page 23
SPORT.....	pages 24-32



A friend to all, Scragpie sits on Maestro the horse's head.

NEWS

Get books signed

By Caroline Hammat

Local children's author Chris Shelton published her second children's book Scragpie in 2018 through Australian publishers Boolarong Press.

Promoting the book was hindered during the Covid pandemic but Ms Shelton will soon be at the Millicent Newsagency signing copies of the locally inspired story.

A teacher and principal for 37 years Ms Shelton's book Scragpie is the true story of a magpie found in the yard at Millicent North Primary School over 20 years ago.

At the time the magpie was cared for by Ms Shelton's students and then taken home to live with her family, who adored the bird.

"Everybody was drawn to her, she captivated everyone, we loved her to bits.

"I've written three other Scragpie stories about different stages and events in her life, and if this one does what my publisher thinks it will do, then they will publish the remaining three" Ms Shelton said.

The picture book is illustrated by Grant Schofield who was the illustrator for Ms Shelton's first book Puzzle Supreme and the Tooth Fairy team. The rhyming story book is aimed at 4-8 year olds and based on Ms Shelton's philosophy that learning should be fun.

"When you are having fun, you are learning without even knowing" Ms Shelton said.

The picture book follows Scragpie as she discovers the path to success is often turbulent but with hard work (and a little help from our friends), even the sky is not the limit. Book signings will take place Saturday November 3rd, 10am to 1pm and copies of the book that will be available to purchase at the newsagency.



Author Chris Shelton with Scragpie and Molly the dog.

Bendigo Bank gives back to Penola community groups

The management company of the Penola & District Community branch of Bendigo Bank, Penola and District Financial Services Limited, held their Annual General Meeting on Thursday, November 10.

Along with shareholders, recipients of the banks Grant and Sponsorship program were in attendance.

Newly appointed Chair, Shane McPherson, thanked staff for their ongoing commitment to the business and outgoing Chair, Mark Edwards for his 10 plus years of service to the community as Chair.

Branch Manager, Tara Batt, spoke to the achievements and milestones made in the branch throughout the 2022 Financial Year, and the plans and targets for the 2023 Financial Year.

The Annual Report was open for discussion, showing a profit of \$21,350, and was passed by those in attendance.

Directors up for re-election included Mark Edwards and Sophie Angus, as well as Anna Copping standing for election due to joining the board since the last AGM, with all three directors being re-elected.

After the conclusion of the AGM, Tara made a presentation to all groups who received a



Branch manager Tara Batt and Penola Town Square Committee Chair Catherine Robinson.

grant or sponsorship and announced that \$275,000 has been distributed to Penola and surrounding areas.

Catherine Robinson, on behalf of the Penola Town Square Working Committee spoke about their upcoming project of the statue of Generosity of Spirit and how the initial commitment from Community Bank Penola & District kickstarted the fundraising drive.



Branch manager Tara Batt and Penola Coonawarra Acoustic Music Gathering members Leigh and Anne Miller.

Pete Balnaves spoke about the collaboration between the Penola branch of National Trust SA, Coonawarra Vignerons Association and Community Bank Penola & District in the renovations of The Bond Store.

John Mossop and Peta Baverstock spoke about the partnership between the Penola Coonawarra Arts Festival and Community Bank Penola & District in putting on the Ben-

digo Bank Kids P-Art-y, a

family day held on the Sunday of the Arts Festival weekend.

All guests enjoyed a delicious morning tea, catered for by Penola Bowling Club.

For a copy of the Annual Report or to discuss further, please contact Ms Batt at the branch on 8737 2400.

Making good things happen

When you bank with us, profits pour into the community. \$275,000 so far.

A bank giving back sounds unusual. For us, it's business as usual.

Find out more. Call us on 8737 2400 or search Bendigo Bank Penola & District.



Community Bank Penola & District

Bendigo and Adelaide Bank Limited ABN 11 068 049 178, AFSL/Australian Credit Licence 237879 A1390563, OUT_26902409, 18/11/2022

12577608-DL47-22



Penola & District Financial Services Ltd Directors Sophie Angus, Kirsty Balnaves, Branch Manager Tara Batt, Amanda Harrold, Mark Edwards and Shane McPherson.



The concept plan for the Casterton Road town entrance



The concept plans for Riddoch Street

Penola to get a facelift

Work on the Penola Town Centre Concepts has begun.

In 2020, work began on concept plans for Riddoch Street and the Town entrance, and extensive consultation was undertaken within Penola with businesses, residents, schools and key stakeholders.

Concept plans were completed, and those plans were endorsed by the Wattle Range Council.

Now, the next step in the process is to complete a detailed design for each of these projects to allow for cost estimates and tender documentation to be prepared.

It is expected that staff from Design consultants Sproutt, who have been appointed to develop the detailed designs, will be in the region to visit the sites and speak with key stakeholders, including impacted traders/business owners, cultural representatives and disability advocates this week.

The plan for Riddoch Street include:

- Widening of kerbs to increase outdoor dining space with new paving, street furniture and bollards
- Retention of existing parking with the opportunity to provide disabled parking
- Improved footpath links with Mackillop Memorial School, Petticoat Lane and interpretive centre
- A central median to allow for pedestrian

crossings, tree avenue and planting areas

- Potential road surface treatment to support low speed environment and provide opportunity for road closures and larger events including removable bollards, power outlets and lighting.

For the Town entrance on Casterton Road, plans include kerb build-outs to define the entry to the town, new paving and improved lighting and signage.

Support your local shops this year

From page 1

“It does have a wide reaching effects.
“We’re just encouraging people to go out with a bang for the stuffed Santa.
“We’re gonna revamp the competition - We’re not even calling it a competition. We’re calling an exhibition next year.”
The winner of the stuffed santa will be announced at the Penola Christmas party on December 16.
It will be held at memorial park, and will feature a range of games, activities and entertainment for the whole family.
“It’s just a fun, free evening for families to come along celebrate Christmas.”

Nicole Reschke encouraged everyone to Look Local this holiday season.



Jo O’Connor
0429 854 910
Real Estate

Carly Moulton
0448 333 483
Property Management

‘Achieving results through a wealth of experience, knowledge and dedication’

57 Church St Penola
pphs.com.au

RLA 315655

FOR SALE



Enter the property market here!!

5 McPherson St Penola
\$239,000

3 bedrooms, 1 bathroom, 1 carport

- This solid 3 bedroom duplex has a generous, renovated, eat-in kitchen with linoleum floor coverings and a gas stove
- Separate lounge room with reverse cycle air conditioner
- Great enclosed back sunroom with lots of storage which leads to the large backyard
- Other features include large garden shed with concrete floor, carport, access to back yard and gas hot water system

Calling all artists for sale

Artists of the South East will be selling their works at the Port MacDonnell Community Centre this summer.

The exhibition is open to all members of the South East Art Society, which will be running the event from December 4 to January 28, at the height of the tourist season.

Vicky Thorpe said the Society is keen to see its current and new members exhibit up to five works.

“With Covid behind us, we can get back to encouraging local talent,” she said.

“New members are especially welcome to show off their work and hopefully make a dollar return for their efforts.”

Artists may enter via the Society’s web site or Facebook page.

Printed entry forms from Port MacDonnell Community Centre or Riddoch Gallery.

Entries close 28th November.



South East Art Society are looking for people to sell their artwork. Picture: FACEBOOK

CALENDAR OF EVENTS

COMPILED WITH THE ASSISTANCE OF WATTLE RANGE COUNCIL

26 November

- 2022 Millicent
- Pony Club Open Camp

30 November

- Penola Late Night Shopping

3 & 4 December

- Inflatable Obstacle Course - Millicent Swimming Lake

10 & 11 December

- Inflatable Obstacle Course - Nangwarry Pool

11 December

- Christmas Fair and Community Carols

31 December

- Beachport New Years Eve Fireworks

7 & 8 January

- Inflatable Obstacle Course - Millicent Swimming Lake

12 January

- Coonawarra Vignerons Cup

14 & 15 January

- Inflatable Obstacle Course - Nangwarry Pool

4 & 5 February

- Inflatable Obstacle Course - Millicent Swimming Lake

11 & 12 February

- Inflatable Obstacle Course - Nangwarry Pool

8 April, 2023

- Beachport Easter Market Day

REGULAR EVENTS

Every Monday

- Senior Citizens, Millicent RSL
- Yoga at Beachport
- Ukulele classes at Penola RSL
- National Karate Academies, Penola Primary School Hall
- Millicent Choral Society practice, High School music room
- Penola Lions Bus to Mount Gambier
- Leggo's Boxing Training, Penola Basketball Stadium

Every Tuesday

- Red Cross Community Shuttle from Millicent to Mount Gambier
- Yoga at Millicent, Community Learning Centre
- Dance to Keep Fit, Beachport
- Millicent Men's Shed
- Melody's Performing Arts classes, Rymill Hall, Penola
- South East Junction Activities

Every Wednesday

- St Mary's Op Shop, Penola
- Millicent Art & Craft Group, Pottery
- Penola Men's Shed
- Social Bowls, Penola
- Ladies only Burlesque classes, Nangwarry
- Social tennis, Penola
- Fun exercise classes, Millicent Uniting Church
- Leggo's Boxing Training, Penola Basketball Stadium
- South East Junction Activities
- Cards at Beachport Cinema
- Lions Club of Wattle Range Lioness Bookshop, 47

George Street, Millicent

Every Thursday

- St Mary's Op Shop, Penola
- Seniors Online, Millicent Library
- Craft at Beachport Cinema
- Millicent Men's Shed
- Ladies only Burlesque classes, Nangwarry
- Red Cross shuttle from Millicent to Mount Gambier
- Beachport Ukulele Group
- Indoor Social Bowls, Millicent Uniting Church
- Family connections program, Penola
- Craft at Beachport Cinema
- Beachport Twilight Golf and Twilight Bowls

Every Friday

- Lego Club, Millicent Public Library
- Lions Club of Wattle Range Lioness Bookshop, 47 George Street, Millicent
- St Mary's Op-Shop, Penola
- Seniors Online, Millicent Library
- Penola Bowls women's competition
- Millicent RSL Open
- Fun exercise classes, Millicent Uniting Church
- Dance classes, Penola
- Bar open Coonawarra Community Club

Every Saturday

- Kalangadoo Farmers Market
- St Mary's Op Shop, Penola
- Millicent Art & Craft Group
- Penola Bowls Club men's competition
- Penola Croquet Club
- Aqua aerobics, Penola pool

- Lions Club of Wattle Range Lioness Bookshop @ 47 George Street, Millicent

Every Sunday

- Beachport Ladies Golf Day
- Millicent Men's Shed

2nd Tuesday of the month

- Wattle Range Council meeting, Millicent Council Chambers

First and Third Thursday of the month

- Book Club, Millicent Library

2nd & 4th Thursday of the month

- Scribblers Writing workshop, Millicent Library

3rd Tuesday of the month

- Millicent Local History, Library
- Penola Probus Club

Last Friday of the month

- Coonawarra Hall tea night

3rd Sunday of the month

- Beachport Hotel family fun day and jam session

4th Thursday of the month

- South East Family History Group meeting

4th Friday of the month

- Beachport Film Society showing

Last Monday of the month

- Penola Leo Club

Last Tuesday of the month

- Millicent Cancer Support Group meeting



CALLING ALL
COMMUNITY
AMBASSADORS

Working as a police officer you'll become
a role model for your community.

At SA Police, we believe everyone has unique skills and abilities. That's why we're calling people from all walks of life to come and join the team. So, whether you're a community ambassador, a true crime buff, or even a fitness fan, turn your passion into a promising career with SA Police.

SA POLICE NOW RECRUITING
VISIT [ACHIEVEMORE.COM.AU](https://www.achievemore.com.au)





Wattle Range Council CEO Ben Gower and Millicent Newsagency owner Paul Smith discuss the area being proposed for upgrades.

New look coming

Design consultants Sproult are currently in the region making preliminary investigations which will assist in detailed designs of the town centre streetscape projects for both Penola and Millicent.

It is the next step in a process that began in 2018 when Wattle Range Council (WRC) committed funds to enhance both town centres.

In a statement released by WRC the original design brief was to improve amenity, preserve character, encourage opportunities for economic development and promote places for people.

WAX Design were originally engaged to present the town concepts after engaging with the community.

Thirteen projects were identified in the two townships with the first three selected by council to progress to the next stage.

The three projects selected are Millicent's combined town park and Glen Street concept and Penola's town entry and Riddoch Street beatification.

Concept plans of the Glen Street upgrade show protuberances to assist with safe pedestrian crossing, tree plantings and more seating.

The open space next to the public toilets on Glen Street has been identified as a potential town park.

Currently used as a carpark by SAPOL a certain proportion needs to be retained for that purpose and formal discussions with government officials are yet to take place but there is the potential to open up a portion of the area.

Wattle Range Council CEO Ben Gower said about the area

"We could use some of that to open up as community land with park benches and more tree plantings.

"It won't be a large area, there is reddish



A mockup of the Glen Street upgrade proposed by WAX Design.

gravel in the built up mounds next to the Glen Street toilets, we just want to do something a bit more appealing.

Sproult representatives are spending the week visiting the proposed sites and meeting with key stakeholders, including impacted traders/business owners, cultural representatives and disability advocates.

One of those stakeholders who met with Sproult Design representatives on Tuesday is Paul Smith, owner of Millicent Newsagency.

"I have no major concerns, the fact it's being beautified is going to be a bonus.

"We sat in on the initial planning consultation about two years ago and suggested something in this area, it's a good thing" Mr Smith said.

At this stage funding has only been allocat-

ed for the design work with Mr Gower telling the South Eastern Times he hoped a detailed design would be presented in time for next year's budget so a decision can be made on moving to the construction phase.

"The projects selected were seen to have the highest level of economic, social and environmental benefit to Penola and Millicent" Mr Gower said.

"Preliminary designs will be provided to Council in March next year, at which time further conversations with stakeholders will occur, with the final designs for tender expected to be ready in June 2023.

"The deliberately staged approach to these rejuvenation projects will enable Council to leverage both internal and external funding, in order to successfully bring the community's vision to life."

Bedford is vital to us

"We are a trusted and sustainable business that changes the lives of people with disability by building their skills to participate in the community"

It was disappointing to recently learn through the community grape vine that Bedford is closing its Bedford Millicent Group of their business operations. Bedford has been a vital part of our community, employing some seventeen local people, in both gardening and laundry skills.

Over the years many other local young people have enjoyed the opportunity of working within this disability specialist area.

A business initiative that came out of the original Millicent Work Option Centre that was managed and operated by a local community board of management.

At that time, it was identified that the original Millicent Work Option Centre needed to transition into a more professional entity to further provide a more sustainable service and create greater employment opportunities for young people in our community that needed support and give them purpose, skills, self-worth and confidence.

After much work Bedford came on board and became a permanent service provider and respected employer for our community within the disability area.

Many local families were supported by this opportunity.

Without any notice, I learnt that now Bedford are closing the Bedford Millicent Group.

This concerns me greatly and after talking to many parents of these young employees, it appears they are just being retrenched from the work force without very little consultation or remuneration. How can this happen?

These are vulnerable young people living and working within our community who need this vital support.

The Bedford \$50 Million dollar masterplan appears to be city-centric, with regional areas being shut down. With the release of the masterplan, Bedfords have let down our most vulnerable by setting them adrift. This, from an organisation that prides itself with a Vision and Mission statement of and I quote, "Bedford is determined to contribute to an Australia where every person with a disability is empowered to achieve their life goals." Sadly, what is being displayed with this corporate decision is when the figures don't add up and we want to change direction, we simply pack up.

Sorry, not good enough for our community.

-Des Noll
Note: These are the thoughts of Mayor Des Noll and not those representing Council.



Paul Smith of Millicent Newsagency and WRC CEO Ben Gower outside the Glen Street business in one of Millicent's busiest streets.



Christmas is happening @ Di's



Room overflowing with everything Christmas

Late night shopping
Wednesday November 30th,
open until 8.00pm

Di's Gifts' n' Flowers
43 Church St, Penola 5277 SA
08-8737 2284
Open 7 days a week until 5pm
www.cobbnco.com.au



12578598-A46-22



2022/23 Wattle Range Community Grants Programs

Applications are being invited from eligible community, sporting and recreation groups for grant funding through Round 2 of the 2022/23 Community Financial Assistance Grant Program: -

Grants are offered in two separate funding categories:

- Community Financial Assistance Grants – provides grants up to \$2,000 to foster and assist in the development of a broad range of community-based services and events within the Council area
- Sport & Recreation Financial Assistance Grants – provides grants up to \$2,000 to foster and assist in the development of sport and recreational infrastructure, services and events within the Council area

Grant program guidelines and application forms are available on Council's website at www.wattlerange.sa.gov.au or can be collected from any of Council's offices. Applicants must read the guidelines for the applicable grant program prior to submitting an application. Only applications made on the forms provided will be considered.

Applications will open on Monday, 28 November 2022 and must be received at Council by **no later than 5 pm on Tuesday, 3 January 2023.**

Please contact the Millicent office on (08) 8733 0900 for more information.

Ben Gower

CHIEF EXECUTIVE OFFICER

12578584-SN47-22

A big win for Pensee

By Caroline Hammat

Eight year old Pensee Fox was the winner of a recent drawing competition held by the Adelaide Jam Factory in association with artist Tom Moore's Abundant Wonder exhibition.

Mr Moore is an Adelaide based cutting edge artist working in the ancient technique of blown glass.

The technique Moore uses may be old but his sculptures and installations are contemporary.

Millicent Gallery hosted the popular touring exhibition late last year.

The immersive installation was full of colourful and wonderful hybrid creatures all made from glass.

During the exhibition children between the ages of 5-12 were given the opportunity to submit an original drawing inspired by the fantastical creatures on display.

The winning drawings were selected by Mr Moore then recreated for the children who later received the completed glass sculpture as their prize.

Pensee received the news in March that her picture would be recreated in blown glass after her mum, Natalie, received a phone call from the Jam Factory.

Pensee told the South Eastern Times she thought Mr Moore's work was unique and colourful.

"I had a couple of favourite pieces" Pensee said.

"I liked the blue cat with the clear and black face, wings and tail.



The drawing by Pensee which inspired the unique artwork.

"I also liked the bird head inside of the fish and the fox head.

Usually the young artist likes to draw cats, self portraits, rainbows and flowers and she incorporated some of these elements into her winning drawing.

"I chose all the colours because I like the rainbow and thought it would look pretty.

"I thought the blown glass was exactly the same as my picture.

"He used the same colours and even added the three lines on my flower stem and the smiley face, which I didn't think he would do."

The sculpture arrived in August and young Pensee has stored away the valuable prize because she does not want to break it.

"It was pretty good and exciting to get this in the mail, I love it" Pensee said.



Pensee Fox with her original Tom Moore glass sculpture.



COULD A RETAIL TRAINEESHIP WORK FOR YOU?

Are you currently working in retail or looking to start your retail career? Or perhaps looking to gain work during your gap year before starting university?

Then why not consider a retail traineeship. The retail sector is one of Australia's largest employers and the demand for skilled workers remains high.

You can kick-start your career in retail at TAFE SA Mount Gambier with a traineeship and gain a competitive advantage by studying either:

- **Certificate III in Retail (SIR30216)**
- **Certificate IV in Retail Management (SIR40316).**

As a trainee you will:

- learn real skills in a retail workplace
- gain a nationally recognised qualification
- earn a wage while you learn
- develop the skills required by industry.

For further information on retail traineeships in your area contact:

Julie-Ann Thompson, Retail Lecturer
TAFE SA Mount Gambier
E: Julie-ann.thompson@tafesa.edu.au
P: 8735 1555
W: tafesa.edu.au/retail

If you are a person who is Deaf, hard of hearing, or have a speech impairment, contact us through the National Relay Service relayservice.gov.au.



Government of South Australia

RTO: 41026
CRICOS: 00092B
IHE: PRV14002



Council Communications

Last Days! FREE Green Waste Disposal
Loads of approved green waste can be disposed of without a voucher at the Millicent, Penola and Beachport Waste Transfer facilities until 30th November 2022.
Conditions apply. For more information visit www.wattlerange.sa.gov.au/wasteinitiatives
For enquiries contact Veolia on 08 8203 3506.

Community Grants Open Soon
Applications for Round 2 of Council's Community and Sport & Recreation Grants programs open on Nov 28. Grants of up to \$2,000 are available, and submissions will be accepted until 3 January 2023.
Guidelines and forms are available at Council's offices or on our website.

Fire Danger Season
The 2022/23 Fire Danger Season commenced in the Lower South East on 22 November 2022.
During the Fire Danger Season restrictions are placed on lighting fires to reduce the chances of large fires starting.
For information visit www.cfs.sa.gov.au/bans-and-ratings/what-can-i-do-what-cant-i-do/ or call 1300 362 361.

Clean up now
Council has begun issuing notices to properties with long grass requiring them to tidy up, ensuring compliance with requirements for inflammable undergrowth under the Fire & Emergency Services Act.
To report a property with long grass or to enquire about the process please contact the Fire Prevention team on 8733 0900.

2023 Australia Day Award Nominations
Do you know someone who makes a difference in your community? Nominations for Council's 2023 Australia Day awards are now open, and nominations are invited in the following categories:

- Citizen of the Year Award
- Young Citizen of the Year Award
- Community Event of the Year Award
- Active Citizenship Award; and
- Youth Recognition Awards (4 categories)

Open until 5 pm on Tuesday, 3 January 2022.
Nomination forms and criteria are available on Council's website or from each of Councils offices.

Employment Opportunities
For information on Council's current employment opportunities, including how to apply, visit <https://wrc.jobs.subscribe-hr.com/>

For further information on Wattle Range Council
visit www.wattlerange.sa.gov.au
or Find us on Facebook



Mayors appeal launched

By Caroline Hammat

This year's annual Community Christmas appeal has been launched and rebadged after being promoted as the Mayoral Christmas Appeal last year.

Wattle Range Council (WRC) Mayor Des Noll took on the charity appeal last year after declining volunteer numbers meant it was at risk of not continuing.

WRC's Emma Clay told the South Eastern Times they were surprised at how labour intensive the process was, collecting donations and goods and then to pack and deliver the hampers.

"We have decided a more sustainable approach to this long term is to partner with the Combined Churches and they have come on board" Ms Clay said.

"It's moved from being the Mayoral Christmas Appeal to the Community Christmas Appeal and we are hoping this will be a more sustainable model."

Ms Clay told the South Eastern Times that enough funding had been raised to purchase the Foodbank hampers but more donations are being sought to value

add to the packs.

"We've ordered 200 hampers, we did 167 last year but we are expecting there to be an increase in demand this year with the costs of living increasing" Ms Clay said.

"Foodbank provide us some fruit and veggies for free, but we like to try and provide a voucher from Foodland as well to get some meat.

"If there is enough funding we try to give a school uniform voucher to any families that have kids."

The organisers are pleased with the volunteer support that has been offered for the practical side of packing hampers with eight Kimberly-Clark employees putting up their hands to help out.

Representatives from Millicent's social issues group have offered to deliver any hampers that are not collected on the day.

Cash donations to go toward the appeal can be dropped at WRC front offices or Visitor Information Centres.

Donation bins have been placed in Millicent, Beachport and Penola supermarkets and are available for donations of non-perishable food items.



Wattle Range Mayor Des Noll and AC Care Millicent both continue to support this year's Community Christmas Appeal.

Church damaged by fire

By Caroline Hammat

Parishioners of Millicent's Uniting Church had the opportunity after last Sunday's service to view the damage caused by a fire in the main church hall on Saturday, November 12.

Uniting Church treasurer, Phil Golding, was first alerted of the fire when a parishioner preparing flowers for the Sunday service noticed smoke in the Radius Room at the rear of the building and phoned him.

Mr Golding arrived around 12.30pm to see light coloured smoke in the room.

After calling 000, he opened the door to the main hall and was greeted by thick black smoke.

"I went there to switch the power off because the switchboard is inside the foyer area, it was just totally dark, I couldn't see through the smoke" Mr Golding said.

"The hall was very hot, the fireys got there just in time to stop it from really going up into the roof."

Smoke damage is extensive throughout the main hall with the ceiling above the stage completely blackened.

Stage curtains are ruined and the main backdrop has completely disintegrated.

Other items at the rear of the stage were burnt and smouldering including a large roll of felt, these were removed from the building by CFS volunteers.

The stage floor has burnt through in two places to the Green room underneath causing damage to the ceiling in that room.

Ash and embers have dropped through to the room below but a decision to clear the Green room of old furniture and other stored items two years ago likely helped to minimise damage.

Some windows in the main hall have suffered cracks and slightly warped frames from the heat of the fire.



Items removed by CFS Volunteers from the back of the stage where the fire seems to have originated from.

Mr Golding told the South Eastern Times the last people to use the hall was a Friday morning exercise group who noticed the lights were not working at the time of their class.

Following the fire Mr Golding checked outside with an electrician and noticed the outside power board where the power line comes into the building on its Western wall had shorted out.

"That would have happened prior to this Friday morning report of no light being on," he said.

"It might have been independent of the fire, there is no apparent damage to the wiring



The main church hall has suffered smoke damage to the ceiling and walls.



Phil Golding stands in front of the blackened walls and ceiling of the stage.

in the hall, that's why we aren't sure it's linked, it might have been coincidental.

Insurance assessors have been on site and a building assessor will arrive next week to ascertain the cost of damage.

It is currently thought the hall will not be usable for the next six months while clean-up and repairs take place.

Church members hope to see the Radius Room, which has less severe smoke damage, cleaned and in use before then.

Local CFS crews were paged at 12.41pm and six vehicles were needed as staff trained and skilled in wearing breathing apparatus

were required onsite to enter the hall.

Crews remained onsite for over an hour and it was brought under control quickly.

CFS Media and Communications officer Brittany Evins said that from a CFS perspective, it seems there wasn't major significant damage.

"There was a call out and our crews responded, but nothing of major significance to warrant an investigation," she said.

Mr Golding praised the work of the emergency services, saying they were on site quickly and he was impressed with how they handled the situation.

Opposition leader to visit

I am very excited that the South Australian Liberal Party will host its first Shadow Country Cabinet in the South East this week.

Since becoming the Leader of the Opposition I have made engagement with regional South Australia a key priority. It's a big reason why I appointed Member for MacKillop Nick McBride as our Shadow Assistant Minister for Regional Engagement.

We want our visits to be meaningful and genuine, eschewing Labor's FIFO approach to regional visits and city-centric decision making. We saw a prime example of this with the recent plebiscite into merging the District Council of Grant and the City of Mount Gambier.

Without consulting with these communities Peter Malinauskas announced a thought bubble to grab a headline in metropolitan media. In contrast, the Liberal Party, including me as well as Shadow Ministers Sam Telfer and Nicola Centofanti, visited and listened to these communities who raised many concerns.

We took these concerns to Parliament but unfortunately the Government didn't listen.

Not surprisingly, the plebiscite was comprehensively rejected in an embarrassing result for the Premier.

The Liberal Party I lead will not make these mistakes and during this upcoming trip I will spend three nights in the South East visiting a range of regional towns.

This will be my third visit to Mount Gambier since taking on the leadership. In just over six months I have personally visited 50 different regional towns and during this visit I will add Kingston, Robe, Southend, Penola and Coonawarra to the list. This time I can't wait to bring my entire Shadow Cabinet with me to make sure we are hearing directly from your community.

So please join us at Naracoorte Showgrounds on Thursday 24 November at 7pm so you can meet me and my team and tell us what matters to you.

- Opposition Leader David Speirs



The South Australian Liberal Party will host its first Shadow Country Cabinet in the South East next week.

Have your say!

COUNTRY SHADOW CABINET & COMMUNITY FORUM

Thursday, 24 November 2022

7.00pm: Naracoorte Showgrounds

HOSTED BY



The Shadow Cabinet Team

Scan the QR code and register to join us or visit: <https://bit.ly/naracoorteregisterofinterest>

For enquiries please contact:

✉ leaderoftheopposition@parliament.sa.gov.au

☎ (08) 8237 9137





Mona celebrating her 90th birthday in 2015.



Mona (left) in her hand made dress and stylish hat on her 21st Birthday in 1946, with Phyllis Chapman, photographed in Mount Gambier's shopping precinct.



Receiving a croquet trophy is Mona Kent (middle) with Addie Schuller and Joy Hann.

Farewell to Mona Kent

Mona Elaine Kent passed away August 27th, 2022 aged 97 Years at Boneham Aged Care Home.

Mona was born January 11, 1925 at Mrs Motts nursing home in Millicent to Olive Ethel Cooke (nee Skutt) of Mount Gambier and Arthur Thomas Cooke of County Sligo, Ireland.

She was the second youngest of five siblings, Edith, Murray, Ray, Mavis and Bryan.

Her parents, met and married in Mount Gambier and moved to Tantanoola to run the general store where they lived in the adjoining house.

Living in Tantanoola all the kids had a great time with their friends, rabbiting with ferrets, catching tadpoles and climbing the big Mulberry tree to pick and eat the fruit.

They had an old tin boat which they would row onto Telfers Swamp to try to catch the muddy fish.

Sunday school and the Church they attend- ed had Sunday picnics which were great fun.

Riding there on the back of an old truck they had foot races, rooster chases and a lolly scramble.a

After finishing school Mona worked in her parents store for a short time before moving to Adelaide to work in the 'Savings Bank of South Australia' but country life called her back.

Returning to Millicent she enjoyed dress- making classes and learnt to drive.

Mona drove until the age of 92 and was proud to say she had an unblemished record with no speeding fines or crashes.

It was at one of Millicent's Saturday night dances where she met Bill Walker who she married in October 1944.

Mona and Bill built a house on Sandon Av-

enue, Millicent and farmed and successfully raced horses.

They had 17 wonderful years together until his sudden death in 1961 at age 44.

Mona played sport for most of her life but was later introduced to golf, a few hits out at the race course and she was hooked.

In 1961 the Mount Burr Golf Course was made using the Woods and Forestry machin- ery to clear the land.

Becoming the Secretary and Treasurer Mona stayed on the committee for 33 years and was awarded a Life Membership in 1973.

Her golfing career took her all over country SA and Victoria to play in tournaments and to Adelaide for country week.

Mona even managed a hole in one although she didn't know she had landed this shot until she walked up and found the ball in the hole.

Her next sports passion was croquet which she continued to play for 50 years.

One of her croquet highlights was being se- lected twice to go to New Zealand to represent the State.

She also played in the 1998 Masters Games held in Mount Gambier.

Mona was awarded Life time Membership in January 1995 on her 70th Birthday.

Another achievement was delivering 'Meals on Wheels' for 38 years and she was presented a beautiful silver tray for her service.

Volunteering in a country town and help- ing her community was very important to her.

After Bills death Mona needed help with the farm which is when Noel Kent came along.

Later falling in love they married in 1964.

A shared love of farming, horse breeding, training and racing ensured it was a wonder- ful partnership.

Racing highlights include Roman Art win- ning two races at Melbourne's Flemington.

At the Adelaide races held at Victoria Park, Morphettville and Cheltenham race courses Mona would often be sitting in the members stand with racing Royalty, Bart Cummings and Colin Hayes.

Mona and Noel travelled to New Zealand twice to buy horses and celebrated when their thoroughbred colt topped the 'Adelaide Mil- lions' yearling sales in 1989.

Mona was always immaculately dressed for the races which included wearing a lovely hat.

Her hat collection was famous and when in town she would often pop into David Jones for another.

This often amused her sister Mavis who would say 'not another bloody hat'.

Mona had a wicked sense of humour and loved a joke.

She related well with all generations and would share her knowledge about the history of the South East.

In the last few years on drives out to Tan- tanoola she knew every Historic Building and every house and who had lived there.

Mona enjoyed life and was very caring to her friends and family.

Downsizing from the farm they moved into the units they built opposite the croquet club on North Terrace in Millicent.

Sadly Noel suffered a stroke in 2015 and moved into the Boneham Aged Care home where Mona continued to visit every day.

In 2017 she decided to join him with the sports lovers mostly enjoying time watching the football, cricket, tennis and racing.

Around Millicent many people would call her Auntie Mona, even those who weren't fam- ily.

MOUNT GAMBIER FAMILY

TRUCK SHOW

GATES OPEN TO PUBLIC AT 10AM

SATURDAY NOVEMBER 26TH

MOUNT GAMBIER SHOWGROUNDS

FAMILY FUN DAY OUT!

• Children activities

• Stalls

• Food & drinks

• Pop up Bar

• Entertainment

• Automotive displays

• Latest trucks on display

• Latest 4x4 accessories on display

• Latest 4x4s on display

• Latest Jet Ski's on display

• Vintage cars & truck display

See the convoy arrive at 9.15am

Raising funds to help our community



Fondly known as Auntie Mona by family and friends alike.

A group of people, mostly older adults, are seated around a long wooden table in a restaurant or bar. They are smiling and appear to be engaged in conversation. In the background, a large screen displays a scenic view of a lake and mountains. The atmosphere is casual and social.

A photograph showing three women seated at a long wooden table in a meeting room. The woman on the left is wearing glasses and a green jacket. The woman in the middle is wearing a blue jacket and is looking down at a document. The woman on the right is wearing a patterned top and is smiling. There are drinks and papers on the table.A photograph of three men standing together indoors. The man on the left is older, with white hair and a beard, wearing a dark jacket over a patterned shirt. The man in the center is balding with a white beard, wearing a light blue polo shirt. The man on the right is older, with white hair and a beard, wearing a red and white plaid shirt. They are all smiling at the camera. The background shows an interior space with a brick wall and a doorway.A photograph showing three people sitting at a table in a meeting room. On the left, a man with glasses and a plaid shirt. In the center, a woman with glasses and a white cardigan over a patterned top. On the right, a man with glasses and a grey blazer. They are all looking towards the camera. In the background, another person is standing near a window.A photograph showing two men shaking hands in a restaurant setting. The man on the left is wearing a light blue button-down shirt and dark trousers. The man on the right is wearing a light blue button-down shirt, glasses, and light-colored trousers. They are standing in front of a red wall with a sign that says "PURE HOT". There are wooden tables and chairs in the background.

AUCTION

2578721-SM47-22

Thursday, 24 November, 2022 9

Meet the class of 2022

By Kathy Fennell

The Penola High School Year 12 graduation dinner was held at the Penola Sports Club on Friday night.



Drinks are ready for Grace and Sara at the dinner



Ready for the dinner from left Monica, Logan, Mark, Angela and Georgina.



Dean, Thomas, Sarah, Ty and Bronwyn ready for a meal at the dinner



The Year 12 class of 2022



Ready to celebrate from left Kasey, Amelia and Breanna at the year 12 dinner



Boys will be boys say Joel, Tom and Aaron.



Kiana and Ashe ready for a good night out at the dinner



Livestock & Property
TDI network Accredited Member



Mark De Garis
0428 372 124



Tom Pearce
0427 642 138

'Mount View'
20194 Riddoch Highway, Mt Gambier
Lifestyle opportunity minutes from city centre

Auction 14th of January 2023, 11am, on property

- 5km from city limits
- 131 Acres over 7 paddocks
- 182mL water licence with ability to water 100 acres
- 50 Acre pivot
- Hay/machinery shed
- 30000ltr rainwater tank
- Powered machinery shed with cement floor plus lunch room

Settlement: 60 days. 5% deposit at fall of hammer

Contact Mark or Tom today for a property memorandum or to arrange an inspection.





49 Church St, Penola
(08) 8737 2695

View online at www.tdcagents.com.au

RLA 44072

10 Thursday, 24 November, 2022



Recently re-elected councillor Moira Neagle with presiding member of HAC Kevin McGrath.



Enjoying the fine weather are Virginia Pawsey and Rose Phillips.

Saying a huge thank you

By Caroline Hammat

The Millicent community turned out in large numbers at Centennial Park on Sunday to thank front line workers for their work during the last two years of the pandemic.

Hospital employees, local ambulance, police, CFS and SES employees and volunteers were in attendance with emergency service vehicles on display.

Free donuts and sausages were on offer and a steady stream of people took the time to acknowledge the workers who were able to attend.

Millicent and Surrounds Health Support Group (MASHSG) were a driving force behind the day and were supported by the Hospital Advisory Council (HAC), Meals on Wheels, South East Property Sales, Lions and Wattle Range Council.

MASHSG member Trevor Sinclair said

"It's been a great day, there have been people coming and going all day and the weather has been brilliant.

"Every aspect has been well organised and I think people have appreciated the opportunity to thank the first responders."



Always ready to assist as needed are SES volunteers Paul Franzi and Gary Hopkins with divisional leader Gavin Golding (Centre).



MASHG members Vicki Sapiatzer and Ron Wood thank Michelle de Wit (left) and Tammy Reilly from Millicent Hospital.



Lorna Malik and her pup, Laoghaire, thanked Jess Liddle for her work in the community.



The community stepped out to thank Millicent CFS volunteers Zak Evans and Ken Allwright.



Tanya Hunter with her grandson Harvey Verbena who gave the thumbs up for the front line workers.



Millicent Ambulance crew Jess Liddle, Pat Butcher, Jamie-Leigh Gepp and Michael Boland (back).

25 year drought broken

By Kathy Fennell

After last winning the sports day team shield at the Penola Primary sports day 25 years ago, the Woods house took out this years honours to receive the Tanya Skeer Memorial shield.

Individual results saw Zali win the Senior girls championship from Lea.

Brody won the seniors boys from Liam.

Emmie won the junior girls championship from Ebony while Zavier won the junior boys from Axel.

The Gordon Bannister cup was won by the Woods team.



Having fun in the three legged race.



Three month old Nova Battye attended her first sports day with Elizabeth and Amelia Marcus.



Enjoying sports day are mother and daughter Deb Harris and Kate McDonald.



Barricking for team mates in the Woods team are Quinn Angel and Oliver Heyesen.



The finish of the boys 100 metre race.

Stay ANOTHER DAY

2023 edition

THE REGION'S PREMIER TOURISM MAGAZINE

Taking bookings now for next year's edition
Publishing March 2023

To book call Melanie, Christine or Katherine on 8741 8170
advertising@tbwtoday.com.au

Beef Focus

2023

Covering the upper and lower South East of South Australia and Western Victoria

For more than 25 years Beef Focus has been the pre-eminent beef cattle annual news publication distributed through established and trusted local news publications across the South East and Western Victoria.

This year's edition will be our best yet, as we showcase the thriving beef industry from one of the best beef regions in the world.

Published January 2023

Newspapers

- The Border Watch
- The Portland Observer
- The Hamilton Spectator
- The Casterton News
- SE Times
- Penola Pennant

Melanie Smith 08 8741 8170
melanie.smith@tbwtoday.com.au 04 1180 0692

Christine Black 8741 8172
christine.black@tbwtoday.com.au

Katherine Ross 8741 8171
katherine.ross@tbwtoday.com.au 0406 985 297

BOOK NOW

The Border Watch

Rural Matters

Op-ed: Biosecurity

By Dr Scott Williams

The sheep industry here in Australia enjoys freedom from many of the world's major diseases, including foot and mouth disease (FMD), sheep pox and scrapie, which can have devastating consequences for long-term sustainability.

But the recent incursions of varroa mite in the honeybee industry and Japanese encephalitis affecting pigs, and the threat posed by FMD being present in Indonesia, show that our island geography and excellent biosecurity standards cannot always prevent pests and diseases.

There is no such thing as zero risk. It's critical that the sheep industry remains alert and adaptable and avoids complacency, particularly in implementing biosecurity practices and traceability systems that will guard against incursions and minimise their impact.

Everyone has a role to play, from livestock producers to supply chain participants to government and the community in general.

This means ensuring sound biosecurity practices. Control the entry of people, vehicles and animals onto your property; ask for health declarations for all purchased or agisted livestock; make sure that anyone or anything that does enter the property is appropriately treated or disinfected; and inspect and quarantine introduced animals, to ensure that any diseases or parasites are detected before they join the rest of the flock or herd.

Freedom from disease means we need fewer chemical, antimicrobial and other treatments to maintain high levels of health and welfare in our sheep, and it minimises the impact of diseases we already have, such as footrot and lice, as well as noxious weeds.

And it gives our sheep products an international trading advantage – Australia has a high degree of market access and a reputation for products that are clean, green and safe to use. But it's the growth in global trade and interaction between countries, combined with climate change, that is expanding the reach of exotic diseases across borders.

The Sheep Sustainability Framework (SSF) has four distinct themes: Caring for our Sheep, Enhancing the Environment and Climate, Looking after our People, Customers and Community, and Ensuring a Financially Resilient Industry. These are not ranked in order of importance. They are all interdependent.

The impact of climate change is closely linked with animal health and welfare, biosecurity and market access. As the world's climate changes, the industry is facing the impact of rainfall variability, temperature fluctuations, and natural disasters.



Dr Scott Williams, chair of the Sheep Sustainability Framework's (SSF) Sustainability Steering Group (SSG).

As temperatures increase, changes in rainfall and humidity affect the reproduction and geographic spread of pests and disease vectors such as flies, ticks, and mosquitoes. Biosecurity risks from climate change can seriously impact market access and the financial resilience of the sheep industry.

The simple reality is that disease does not respect boundaries. This makes traceability systems like the National Livestock Identification System (NLIS) and programs like Livestock Production Assurance (LPA) critical to the prevention, identification, control and elimination of a disease outbreak, and shares the responsibility for monitoring across industry, regardless of state and territory boundaries.

Electronically identified livestock (eID) can be traced with greater efficiency and accuracy than visually identified livestock. The faster that livestock can be traced, the greater the chance of controlling a disease outbreak and minimising its economic and social effects.

An outbreak of an emergency animal disease like FMD in Australia would be devastating. Even if it was quickly contained and eradicated, it would still take around 18 months before we could return to a formal status of

freedom without vaccination, and regain the market access we have now.

Effective traceability relies inherently on industry compliance and national consistency.

When systems are fully supported and activated, the benefits of improved traceability to biosecurity and market access will accrue across the entire value chain.

The beef industry is already seeing a spreading of insect pests like ticks and buffalo flies and some internal parasites are becoming either more localised or concentrated, or more widely distributed.

We will need to work smarter and more collaboratively, harnessing technology and data to drive biosecurity innovation.

Biosecurity impacts on the health of the flock, the viability of farmers, the reputation of Australia as a premium trading partner, and the sustainability of the sheep industry, and traceability is a key element to ensure we stay healthy for the long term.

To quote Thomas Jefferson, 'The price of freedom is eternal vigilance.'

Dr Scott Williams, chair of the Sheep Sustainability Framework's (SSF) Sustainability Steering Group (SSG)



Australia's Sustainability Agricultural Efforts panel with Michelle Gortan (Farming for Future), Edwina Clowes (MLA), Sam Gill (MLA), Fiona Simson (NFF), Sam Elsom (Sea Forest), Nick Hazell (V2Food) and Andrew Jones (Bureau of Meteorology).

International conference

World leaders and policy makers met at the 2022 Conference of the Parties of the UN-FCCC summit, commonly known as COP27, in Sharm El-Sheikh, Egypt, in November.

At the conference, Meat & Livestock Australia (MLA) supported the Australian Government, National Farmers Federation (NFF) and Australian Forest Products Association (AUSFPA) as part of the Australia side event delegation to profile Australian agriculture's commitment and progress in climate mitigation.

Representing MLA at COP27 was Sam Gill, regional manager - Middle East and North Africa and Edwina Clowes, manager - sustainability frameworks and stakeholders.

Joining the Australian Government's Decarbonisation panel presentation on Friday November 11 and the Agriculture Day panel presentation on November 12, Sam Gill highlighted the Australian red meat and livestock industry's Carbon Neutrality by 2030 target (CN30), the roadmap to meet that commitment and industry's significant progress to date.

Since 2005, the Australian red meat and livestock industry has reduced net emissions by almost 60 percent and halved its contribution to national greenhouse gas (GHG) emissions.

This represents the greatest reduction by any sector in Australia's economy. According to Sam Gill, this was a critically important story for the industry to be telling at COP27.

"While the Australian red meat and livestock industries have made great strides compared to similar industries overseas, it was highly beneficial to share our expertise with our international colleagues," Mr Gill said.

"Greater attention around food security, food systems, food production and agriculture was evident at COP27 compared to previous forums which was encouraging to see."

Feral rabbits to be targeted in program

The Limestone Coast Landscape Board (LCLB) is looking to increase its feral rabbit control programs in the lead up to summer.

LCLB has announced it will be using a biological control agent to keep rabbit numbers down in tandem with landholder control programs.

The agent, RHDV K5, has been developed to cause a variant of the Rabbit Haemorrhagic Disease Virus in European rabbits.

LCLB acting team leader of northern operations Josh Rosser said relying on biological control alone will not bring populations down to sustainable levels.

"The best approach is a coordinated rabbit control program with neighbours firstly spotlighting to find problem areas then applying targeted poison baiting and follow up warren destruction," he said.

"A variety of rabbit control methods are

available for landholders and can include trail baiting with 1080 oat bait, Pindone poison oat or carrot bait, fumigation, biological control and warren destruction."

Mr Rosser warned domestic rabbit owners to make sure they were up to date on their vaccinations as pet rabbits could also be at risk of infection.

"Domestic (pet) rabbits can be infected by RHDV strains, as they are descendants of wild rabbits and we advise owners of pet rabbits to vaccinate their animals against the virus," he said.

LCLB has also requested landholders who find suspected diseased rabbits to report sightings to RabbitScan to help better inform future rabbit control programs.



Population Control: Limestone Coast Landscape Board acting team leader of northern operations Josh Rosser.

Picture: SUPPLIED

Nutrien
Ag Solutions™

REMINDER NOTICE

Clearing sale 25/11/22

A/c Woodrise Pastoral
1304 Magareys Lane Bray
10am start

Darryn Simon 0428 817 962
Anthony Driessen 0428 838 283

Lot 14 McIntyre Road Millicent
SA 5280
T: 08 8733 2733

Motoring

Outlander's bold aspirations

By Derek Ogden, Marque Motoring

Petrol/electric hybrid vehicles have been around for years - think Toyota Prius and Honda Insight - the former still on the streets, leading the way, especially in the fleet world such as that of taxis.

In these vehicles an internal combustion engine is used to charge a battery, which feeds an electric motor, partially powering the car.

Still a source of pollution.

What if the engine could be bypassed and the battery charged externally?

Enter the plug-in hybrid electric vehicle, in which petrol and battery power are used in tandem to drive the vehicle at optimum reduced emissions until the battery is out of juice and internal combustion automatically takes over completely.

The first sports utility vehicle to take advantage of the combined powertrain, the Mitsubishi Outlander PHEV, which made its way Down Under a decade ago, has sold more than 300,000 units, making it the most popular plug-in in the world.

The latest generation comes in four variants - ES five-seater, aspire five-seat, Exceed 5+2 seater and Exceed Tourer 5+2-seater.

Prices start at \$54,590 and top out at \$68,490, plus on-road costs.

On test was the Outlander PHEV Aspire 5 seat at \$60,990.

Compared with the outgoing model, the new Outlander is longer, wider, taller, heavier and boasts a longer wheelbase.

Muscular flared fenders match its broad shoulders.

Sharp daytime running lights cap off an LED headlamp cluster designed to provide greater visibility over long distances, while extended horizontal rear LED lights with T-shaped ends highlight the Outlander PHEV's distinctive shoulders.

Machined 20-inch alloy wheels bolster the Aspire's impressive stance.

The cabin presented a relaxed, quiet, even when the petrol motor was in action, the only intrusion was road noise on non-too-smooth bitumen or concrete.

The seats, however, were on the firm side.

Leg and shoulder space was generous, thanks to the absence of a third row of seating, which also contributed to plenty of room in the boot - 485 litres with seat backs up and up to 1478 litres with second row backs folded.

Loading was made easy by a power lift back and flat removable floor, under which was located various tools and charging leads, but no spare tyre, full size or otherwise.

All plug-in Outlanders feature a 9-inch touchscreen displaying menu and maps clearly and moving between modes is simple, while the Aspire grade has a 12.3-inch digital information set-up showing powertrain info and speed, plus other configurable info.

All grades are powered by an upgraded 2.4 litre four-cylinder engine, combined with a pair of electric motors on front and rear axles, delivering 185 kW and 450 Nm to all four wheels.

The Outlander PHEV shares the five-star ANCAP safety grade won by its petrol-only sibling earlier this year.

Active safety includes autonomous emergency braking (forward and reverse), lane departure warning, lane-keep assist, blind-spot monitoring, traffic sign recognition, adaptive cruise control, rear cross-traffic alert and surround view camera.

Passive safety is covered by eight airbags, including in the front centre position.

With the lack of engine noise the car lets out a muffled bell ringing sound to alert unwary pedestrians.

You meet a better class of cabbie at public charging stations; I'm talking about the Uber



Top of the range: The latest generation Mitsubishi Outlander plug-in hybrid SUV continues its standing at the top of the segment.

driver 'of a certain age' and his Tesla Model 3.

With a lazy half hour to spare during a busy schedule we chatted while the test Outlander PHEV was on fast charge.

Forty minutes later, the Outlander battery 80 per cent juiced (70-odd kilometres range on the clock), with \$4.09 paid, we parted ways.

During a spread of driving tasks, the test car came up on average with energy consumption of just over 20.0 kWh per 100 kilometres, against a maker's claim of 19.2 kWh / 100km.

The petrol engine chips in only if you load up the acceleration or the vehicle tops 135km/h.

It also helps charge the battery, as does braking through kinetic energy conversion.

Mitsubishi claims, on dual fuel, the PHEV uses 1.5 litres per 100 kilometres.

With the battery flat, the engine automatically shoulders the load, recording on test, fuel consumption of around 5 litres per 100 kilometres.

The system's performance can be tracked visually through an animated diagram on the instrument panel.

Home charging from a 240V outlet, the maker claims 9.5 hours from zero to 100 per cent, or 6.5 hours from a domestic wall box.

Alternatively, charging to 80 per cent can be done from the on-board generator in an hour and a half.

Driving to conditions are catered for by up to seven modes available through a wheel on the centre console, while four power modes - Normal, EV, Save and Charge - can be accessed by means of an adjacent button.

Also close by is a button that calls into action regenerative braking strong enough to allow one-pedal driving, good enough to bring the car almost to a complete stop.

Six softer stages of braking can be operated



Quiet drive: The interior of Mitsubishi's PHEV blocks out the road noise with ease.

using steering wheel-mounted shift paddles.

A head-up display on the windscreen covers speed and legal speed limits.

Tow rating is 1600 kg braked and 750 kg unbraked.

Despite the initial cost of ownership, with petrol prices rapidly heading north, any ve-

hicle that eases the wallet wound is worth looking into.

The Outlander Aspire plug-in hybrid covers all petrol/electric bases without the anxiety of its meagre 80-plus kilometre limited EV range.

The industry-leading warranty is the icing on the cake.

WEATHER

FORECAST

Warnings

See www.bom.gov.au/australia/warnings

SOUTH AUSTRALIA:

State Forecast:

Isolated showers over the southeast coast, clearing during the morning to a mild and partly cloudy day. Morning fog patches about the southern agricultural area. Mostly sunny and warm elsewhere. Areas of high cloud increasing in the far west. Mild to warm, grading to hot in the north and west. Mainly light winds tending moderate northerly in the far west.

Friday. Showers and storms developing in the far west reaching areas west of about Spencer Gulf and Coober Pedy by the end of the day. Mild to warm in the south grading to warm to hot in the north and west. Light winds in the east tending moderate northeast to northerly in the west.

Saturday. Showers and possible storms moving across the State on Saturday, followed by a cooler, moderate to fresh southwesterly flow bringing showers to agricultural areas through to early next week.

Lower South East District:

Partly cloudy. The chance of fog in the morning, mainly in the north. Light winds.

Friday. Partly cloudy. Light winds becoming north to northeasterly 15 to 20 km/h during the morning then becoming light during the evening.

VICTORIA:

South West District:

Cloudy. Slight (30%) chance of a shower in the southeast. Light winds becoming west to southwesterly 15 to 20 km/h during the afternoon then becoming light during the evening.

Friday. Mostly sunny. Light winds becoming northerly 15 to 20 km/h during the day then tending northeasterly during the evening.

COONAWARRA FORECAST



TODAY
Cloudy. 22



TOMORROW
Mostly sunny. 28



SATURDAY
Showers. 24



SUNDAY
Showers increasing. 20



Sunny



Mostly sunny



Partly cloudy



Cloudy



Chance shower



Shower or two



Showers



Light rain (drizzle)



Rain



Storm



Showers storm



Windy



Dust

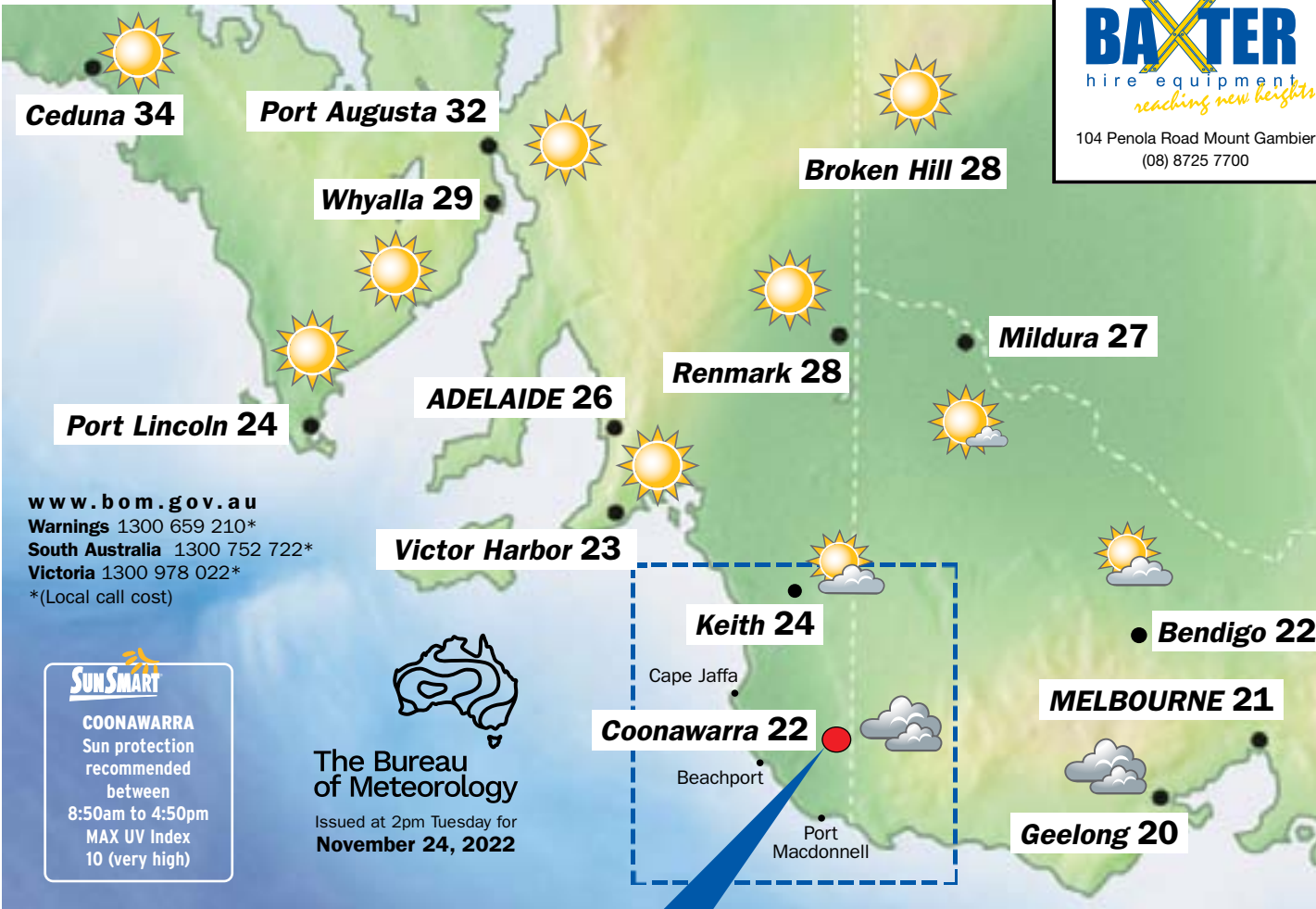


Fog

ENJOY YOUR DAY WITH THIS
PAGE BROUGHT
TO YOU BY

BAXTER
hire equipment
reaching new heights

104 Penola Road Mount Gambier
(08) 8725 7700



www.bom.gov.au
Warnings 1300 659 210*
South Australia 1300 752 722*
Victoria 1300 978 022*
*(Local call cost)



COONAWARRA
Sun protection
recommended
between
8:50am to 4:50pm
MAX UV Index
10 (very high)

The Bureau
of Meteorology
Issued at 2pm Tuesday for
November 24, 2022

COASTAL WATERS

South Central Coastal Waters:

Winds: Variable about 10 knots becoming east to northeasterly 15 to 20 knots during the day. Seas: Below 1 metre. Swell: South to southwesterly 2 to 3 metres, decreasing to 2 metres during the evening. Weather: Partly cloudy.

Upper South East Coastal Waters:

Murray Mouth to Cape Jaffa

Winds: Variable about 10 knots becoming south-easterly 10 to 15 knots during the afternoon then tending easterly during the evening. Seas: Below 1 metre. Swell: Southwesterly 2.5 to 3 metres, decreasing to 2 metres during the evening. Weather: Partly cloudy.

Lower South East Coastal Waters:

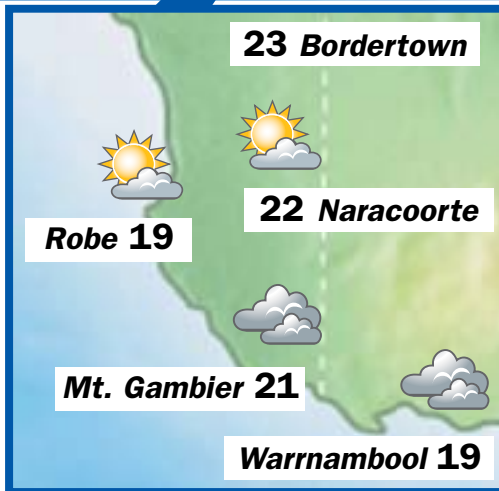
Cape Jaffa to SA-Vic Border

Winds: Westerly 10 to 15 knots becoming variable about 10 knots during the morning. Seas: Below 1 metre. Swell: Southwesterly 3 to 4 metres, decreasing to 2.5 to 3 metres during the morning. Weather: Cloudy.

West Victoria Coastal Waters:

SA-Vic Border to Cape Otway

Winds: Westerly 10 to 15 knots becoming variable about 10 knots during the evening. Seas: Around 1 metre. Swell: Southwesterly 3 to 4 metres, decreasing to 2.5 to 3 metres during the morning. Weather: Cloudy.



TIDES

Beachport

Today:

H:	1:09am	1.1m
L:	8:18am	0.3m
H:	12:20pm	0.5m
L:	6:06pm	0.1m

Tomorrow:

H:	1:38am	1.1m
L:	9:00am	0.4m
H:	12:23pm	0.5m
L:	6:22pm	0.1m

Saturday:

H:	2:10am	1.2m
L:	9:46am	0.4m
H:	12:24pm	0.5m
L:	6:41pm	0.0m

Sunday:

H:	2:42am	1.1m
L:	7:03pm	0.0m

Monday:

H:	3:15am	1.1m
L:	7:27pm	0.1m

Tuesday:

H:	3:48am	1.0m
L:	7:52pm	0.1m

Port Macdonnell

Today:

H:	1:11am	1.2m
L:	8:22am	0.5m
H:	12:11pm	0.7m
L:	6:24pm	0.2m

Tomorrow:

H:	1:44am	1.3m
L:	9:05am	0.5m
H:	12:15pm	0.6m
L:	6:41pm	0.2m

Saturday:

H:	2:18am	1.3m
L:	9:51am	0.6m
H:	12:22pm	0.6m
L:	6:51pm	0.1m

Sunday:

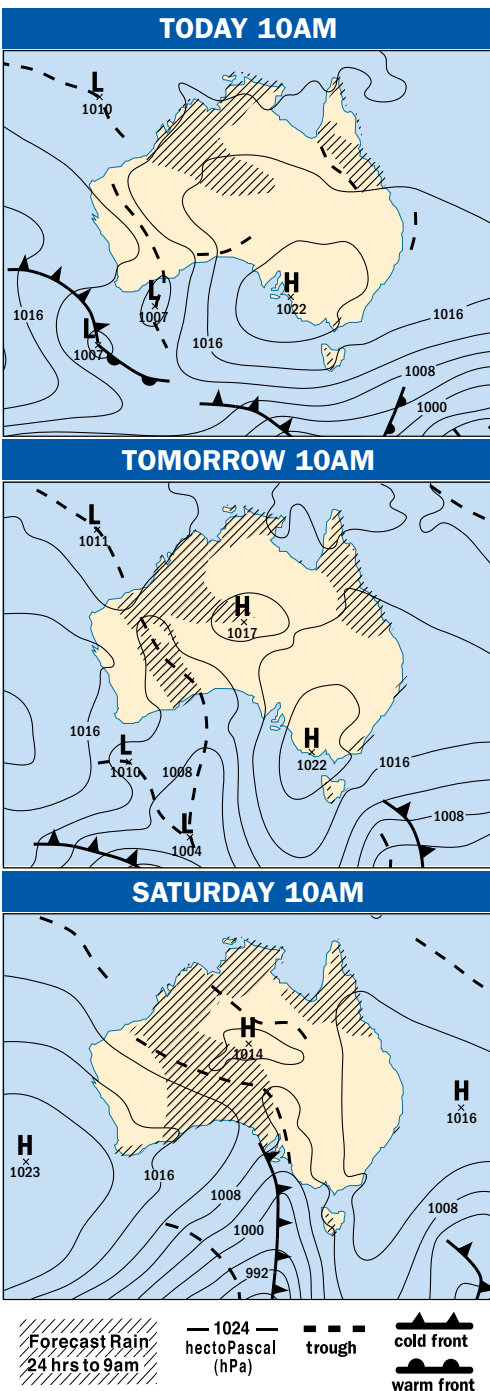
H:	2:53am	1.2m
L:	10:40am	0.6m
H:	12:26pm	0.7m
L:	7:13pm	0.1m

Monday:

H:	3:26am	1.2m
L:	11:32am	0.7m
H:	12:29pm	0.7m
L:	7:45pm	0.2m

Tuesday:

H:	3:59am	1.1m
L:	8:20pm	0.2m



CAPITAL CITIES

City	Condition	Max
Adelaide	Sunny.	26
Brisbane	Mostly sunny.	30
Canberra	Mostly sunny.	23
Darwin	Shower. Possible storm.	33
Hobart	Partly cloudy.	20
Melbourne	Partly cloudy.	21
Perth	Partly cloudy.	23
Sydney	Mostly sunny.	25

SUN & MOON

	Sunrise	Sunset	Moonrise	Moonset
Thursday	5:42am	8:04pm	5:34am	8:36pm
Friday	5:42am	8:05pm	6:19am	9:51pm
Saturday	5:42am	8:06pm	7:15am	10:59pm
Sunday	5:41am	8:07pm	8:20am	11:58pm
Monday	5:41am	8:08pm	9:33am	Nil
Tuesday	5:40am	8:09pm	10:47am	12:46am

THE WORLD

World conditions yesterday

City	Weather	Max	Min
Athens	cloudy	19	12
Auckland	windy	20	13
Bangkok	storms	33	26
Beijing	fine	12	0
Berlin	cloudy	5	0
Christchurch	showers	22	11
Denpasar	rain	33	27
Dublin	sunny	9	6
Hong Kong	showers	24	21
Honolulu	showers	28	23
Jakarta	rain	31	26
Johannesburg	storms	30	16
Kuala Lumpur	storms	32	24
London	showers	11	6
Los Angeles	sunny	24	8
Madrid	rain	15	14
Moscow	fine	-3	-5
New Delhi	mist	26	9
New York	sunny	11	3
Noumea	sunny	30	23
Paris	showers	12	6
Auckland	windy	20	13
Port Vila	showers	30	22
Seoul	rain	16	9
Singapore	storms	33	23
Suva	showers	32	23
Tel Aviv	fine	25	20
Tokyo	rain	14	9
Vancouver	showers	9	4
Wellington	windy	21	12

YOUR WEEKLY TV GUIDE



PICK OF THE WEEK

STUCK

SBS Viceland, Monday, 9.25pm

Black Books' co-creator and star, comedian Dylan Moran, makes his most significant return to the small screen in decades with this short-form comedy about a long-term relationship. Moran plays Dan, a curmudgeonly ad man, who shares a small flat with his ebullient partner of 15 years, Carla (the utterly magnetic Morgana Robinson, *The Windsors*). After Dan's called in by his boss for a 'chat', it sets in motion an incisive journey of middle-aged soul-searching as he and Carla contemplate a cross-road in their lives. All five 15-minute parts are airing tonight, so settle in for a sitcom that's simultaneously surreal and super-real.

WHAT'S
ON THE
BOX?

2022 ARIA AWARDS Nine, Thursday, 7.30pm

From the Hordern Pavilion in Sydney with Aussie singing superstar Natalie Imbruglia (pictured) as host, this year's homegrown music awards promise to be a fun spectacle. The ceremony marks a return to full celebration mode for the Australian music world's "night of nights". This year's nominees include Rūfūs Du Sol, Flume, Vance Joy, the Kid Laroï, Baker Boy, Gang Of Youths and, funnily enough, ABBA, who are nominated in the Most Popular International Artist for their first album in 40 years, *Voyage*.



MOTORWAY PATROL Seven, Sunday, 8pm



Have you wondered what the roads of New Zealand might resemble if police officers weren't cruising around to catch drug drivers, remove errant animals, rescue drivers and make sure everyone wore their seatbelts?

It'd be a topsy-turvy ride and one that would deny us the buzz of witnessing free-wheeling people going about their commute in a very lawless – and entertaining – fashion. This week, in the season 18 premiere, tune in to learn what "towing a 10-tonne meatball out of Spaghetti Junction" really means.

FISK ABC TV, Wednesday, 9pm

From Helen's (Kitty Flanagan, pictured) floppy brown suit to George's (Aaron Chen) blunt mullet and Roz's (Julia Zemiro) coiffed high hair, it's the little eccentricities of *Fisk's* well-written, imperfect characters that draw you in. Flanagan's award-winning comedy is a warm-hearted and playful treat. Settle in and savour the fun in the season two finale. In "Snitches Get Riches", *Play School's* Alex Papps and comedian Colin Lane guest star. Trouble is bound to brew when Ray (Marty Sheargold) goes on leave, leaving Helen in charge.



Thursday, November 24

ABC TV (2)

6.00 News Breakfast. **9.00** ABC News Mornings. **10.00** Australian Story. (R) **10.30** That Pacific Sports Show. (R) **11.00** All Creatures Great And Small. (PG, R) **12.00** ABC News At Noon. **1.00** Hard Quiz. (PG, R) **1.30** Question Everything. (Mls, R) **2.00** Parliament Question Time. **3.00** Gardening Australia. (R) **4.10** Long Lost Family. (PG, R) **5.00** Back Roads. (PG, R) **5.30** Hard Quiz. (PG, R)

6.00 The Drum. **7.00** ABC News. **7.30-7.30**. Presented by Sarah Ferguson. **8.00** You Can't Ask That: Firefighters. (Ml, R) Firefighters share their personal insights. **8.35** Q+A. Public affairs program. **9.40** Baby Surgeons. (Ma, R) Part 2 of 3. **10.25** Stuff The British Stole. (PG, R) **10.55** ABC Late News. **11.10** The Business. (R) **11.30** Love On The Spectrum. (PG, R) **12.30** Freddie Mercury: The Final Act. (Ml, R) **2.00** Parliament Question Time. **3.00** Rage. (MA15+adhlsv) **4.25** The Drum. (R) **5.25** 7.30. (R)

ABC TV PLUS (22) **6am** Children's Programs. **5.20pm** Hey Duggee. **5.30** Kiri And Lou. **5.35** Go Jetters. **5.50** Peppa Pig. **5.55** Reef School. **6.05** Ben And Holly. **6.20** Bluey. **6.25** Alva's World. **6.40** Andy's Dinosaur Adventures. **7.00** Odd Squad. **7.10** Shaun The Sheep. **7.20** Bluey. **7.30** Spicks And Specks. **8.30** Would I Lie To You? **9.00** Starstruck. **9.45** Question Everything. **10.15** Penn & Teller: Fool Us. **11.00** Doctor Who. **12.05am** Staged. **12.25** This Time With Alan Partridge. **12.55** Blunt Talk. **1.25** ABC News Update. **1.30** Close. **5.00** Hoot Hoot Go! **5.10** Dot. **5.25** Baby Jake. **5.35** Charlie And Lola. **5.45** Late Programs.

N ITV (34) **6am** Morning Programs. **8.45** Bushwhacked! **9.35** The Magic Canoe. **10.00** Arctic Secrets. **10.50** Road Open. **11.00** High Arctic Haulers. **11.50** Peckham's Finest. **12.35pm** To The Ends Of The Earth. **2.00** Shortland St. **2.30** The Cook Up. **3.00** Bushwhacked! **3.25** The Magic Canoe. **3.50** Wolf Joe. **4.00** Raven's Quest. **4.10** Grace Beside Me. **4.35** Spartakus And The Sun Beneath The Sea. **5.00** Our Stories. **5.30** The 77 Percent. **6.00** Bamay. **6.30** News. **6.40** Arctic Secrets. **7.30** Going Places With Ernie Dingo. **8.30** Tribal. **9.20** **MOVIE**: Raw Deal. (1986, MA15+) **11.10** Late Programs.

SBS (3)

6.00 Soccer. 2022 FIFA World Cup. Group F. Belgium v Canada. Continued. **8.30** Soccer. 2022 FIFA World Cup. Group F. Morocco v Croatia. Replay. **11.30** Soccer. 2022 FIFA World Cup. Group E. Spain v Costa Rica. Replay. **2.30** Soccer. 2022 FIFA World Cup. Group E. Germany v Japan. Replay. From Khalifa International Stadium, Doha, Qatar. **5.30** ABC World News Tonight With David Muir.

6.00 FIFA World Cup 2022 Daily World Cup Show. (R) Presented by Claudio Fabiano. **6.30** FIFA World Cup 2022 Preview Show. (R) A preview of FIFA World Cup matches, as well as a look at the latest news and team and player profiles. **7.00** SBS World News. **8.00** Soccer. 2022 FIFA World Cup. Group G. Switzerland v Cameroon. From Al Janoub Stadium, Al Wakrah, Qatar. **11.00** Soccer. 2022 FIFA World Cup. Group H. Uruguay v Korea Republic. **2.00** Soccer. 2022 FIFA World Cup. Group H. Portugal v Ghana. **5.00** Soccer. 2022 FIFA World Cup. Group G. Brazil v Serbia.

SBS VICELAND (31) **6am** WorldWatch. **9.30** Shortland St. **11.00** The Movie Show. **Noon** Dave Gorman: Terms And Conditions Apply. **2.40** Front Up 1998. **3.40** ABC World News Tonight With David Muir. **4.05** PBS News. **5.05** Shortland St. **5.35** The Joy Of Painting With Bob Ross. **6.05** Jeopardy! **6.30** FIFA World Cup 2022 Daily World Cup Show. **7.00** FIFA World Cup 2022 Preview Show. **7.35** 8 Out Of 10 Cats Does Countdown. **8.30** The Curse Of Oak Island. **10.10** Betraying The Badge. **11.05** In Search Of... **11.55** VICE News Tonight. **12.50am** **MOVIE**: Superfly. (2018, MA15+) **2.55** NHK World English News. **5.00** Al Jazeera News Hour.

SBS WORLD MOVIES (32) **6am** The Movie Show. **6.10** Love And Friendship. (2016, PG) **7.50** The Odyssey. (2016, PG, French) **10.05** Frozen River. (2008, M) **11.50** The Heist Of The Century. (2020, M, Spanish) **1.55pm** Bugsy Malone. (1976, PG) **3.40** Toast. (2010, PG) **5.25** Maudie. (2016, PG) **7.35** Charlie And Boots. (2009, M) **9.30** Layer Cake. (2004) **11.30** Children Of Men. (2006, MA15+) **1.30am** Two Lovers And A Bear. (2016, MA15+) **3.20** Flawless. (2007, M) **5.20** The Movie Show. **5.55** Maudie. (2016, PG)

SEVEN (6)

6.00 Sunrise. **9.00** The Morning Show. (PG) **11.30** Seven Morning News. **12.00** **MOVIE**: Home For Harvest. (2019, PGa, R) **2.00** Kochie's Business Builders. **2.30** Border Security: International. (PGad, R) **3.00** The Chase. (R) **4.00** Seven News At 4. **5.00** The Chase Australia.

6.00 Seven News. **7.00** Home And Away. (PGa) Bree has a new lease on life. **8.30** The Front Bar. (M) Sam Pang, Mick Molloy and Andy Maher take a lighter look at the world of cricket and catch up with the stars. **9.30** Kitchen Nightmares Australia. (Ml, R) Colin Fassnidge has to deal with a side order of denial when he comes to the aid of Café Martini. **10.35** The Latest: Seven News. **11.05** Monster Mansion: Evil Behind Bars. (MA15+av, R) **12.15** Fantasy Island. (PG, R) **2.00** Home Shopping. (R) **4.00** NBC Today. **5.00** Seven Early News. **5.30** Sunrise.

7MATE (60) **6am** The Fishing Show. **7.00** Fish Of The Day. **7.30** Creek To Coast. **8.00** A Football Life. **9.00** America's Game: The Super Bowl Champions. **10.00** American Pickers. **11.00** American Restoration. **11.30** Pawn Stars. **12.30pm** Shipping Wars. **2.00** Scrap Kings. **3.00** Wild Transport. **3.30** Hustle & Tow. **4.30** Aussie Lobster Men. **5.30** American Pickers. **6.30** Cricket. Women's Big Bash League. The Challenger. **10.00** **MOVIE**: Alex Cross. (2012, M) **12.05am** American Restoration. **12.35** S.W.A.T. **2.30** Hustle & Tow. **3.00** NFL. NFL. Week 11. New England Patriots v New York Jets. Replay.

7TWO (62) **6am** Home Shopping. **6.30** Escape To The Country. **7.30** Harry's Practice. **8.00** Cruise Away. **8.30** Million Dollar Minute. **9.30** NBC Today. **Noon** Emmerdale. **12.30** Coronation Street. **1.00** Sons And Daughters. **3.00** South Aussie With Cosi. **3.30** Million Dollar Minute. **4.30** Medical Emergency. **5.00** RSPCA Animal Rescue. **5.30** Escape To The Country. **6.30** Bargain Hunt. **7.30** Father Brown. **8.30** Miss Scarlet And The Duke. **10.30** Murdoch Mysteries. **12.30am** Father Brown. **1.30** Escape To The Country. **2.30** Bargain Hunt. **3.30** Room For Improvement. **4.00** Harry's Practice. **4.30** Late Programs.

NINE (8)

6.00 Today. **9.00** Today Extra. (PG) **11.30** Morning News. **12.00** **MOVIE**: The Mystery Of Michelle. (2018, Mav) **1.45** Garden Gurus Moments. (R) **2.00** Pointless. (PG) **3.00** Tipping Point. (PG, R) **4.00** Millionaire Hot Seat. **5.00** Afternoon News.

6.00 Nine News. **7.00** A Current Affair. **7.30** 2022 ARIA Awards. (Ml) Hosted by Natalie Imbruglia. **9.15** To Be Advised. **10.15** Nine News Late. A look at the latest news and events. **10.45** Emergency Call. (Ma) Follows 911 calls. **11.35** Pure Genius. (Mm) **12.30** Tipping Point. (PG, R) **1.30** TV Shop: Home Shopping. (R) **2.30** Global Shop. (R) **3.00** TV Shop: Home Shopping. (R) **4.00** Believer's Voice Of Victory. (PGa) **4.30** A Current Affair. (R) **5.00** News Early Edition. **5.30** Today.

9GEM (81) **6am** TV Shop: Home Shopping. **7.00** Creflo Dollar Ministries. **7.30** TV Shop: Home Shopping. **10.30** Pointless. **11.30** Golf. PGA Australia. Australian PGA Championship. First round. **4.30pm** As Time Goes By. **5.30** Murder, She Wrote. **6.30** Antiques Roadshow. **7.30** Grantchester. **8.40** Poirot. **10.50** Snapped. **11.50** House. **12.50am** Explore. **1.00** TV Shop: Home Shopping. **4.30** Joyce Meyer. **5.00** TV Shop: Home Shopping.

9GO! (82) **6am** Children's Programs. **Noon** The Carrie Diaries. **1.00** LA Clippers Dance Squad. **2.00** Full House. **3.00** The Nanny. **3.30** 3rd Rock. **4.00** That '70s Show. **4.30** Raymond. **5.30** The Nanny. **6.00** 3rd Rock. **6.30** That '70s Show. **7.00** Young Sheldon. **7.30** Survivor. **8.30** Love Island Australia. **9.30** Naked Attraction. **10.30** Dating No Filter UK. **11.00** Dating No Filter. **11.30** Young Sheldon. **Midnight** I Am Cait. **1.00** Baywatch. **2.50** Mike Tyson Mysteries. **3.00** Bakugan: Geogan Rising. **3.30** Ninjago: Masters Of Spinjitzu. **4.00** TV Shop: Home Shopping. **5.00** Pokémon Journeys. **5.30** Yu-Gi-Oh! Sevens.

TEN (5)

6.00 The Talk. (PGa) **7.00** Judge Judy. (PG, R) **7.30** The Bold And The Beautiful. (PG, R) **8.00** 10 News First: Breakfast. **8.30** Studio 10. (PG) **12.00** Dr Phil. (Ma) **1.00** To Be Advised. **2.30** Entertainment Tonight. **3.00** Judge Judy. (PG, R) **3.30** My Market Kitchen. (R) **4.00** Farm To Fork. **4.30** The Bold And The Beautiful. (PG) **5.00** 10 News First.

6.30 The Project. A look at the day's news and events. **7.30** Claremont: A Killer Among Us. (M) Part 2 of 2. For over 20 years, the Claremont killer managed to escape justice. **9.00** Law & Order: SVU. (Ma, R) Benson tries to help two sisters get closure from a harrowing childhood assault. **10.00** Blue Bloods. (Mv, R) The Reagan family is harassed. **11.00** The Project. (R) A look at the day's news and events. **12.00** The Late Show With Stephen Colbert. (PG) **1.00** Home Shopping. (R) **4.30** CBS Mornings.

10 BOLD (51) **6am** Home Shopping. **8.00** Pooches At Play. **8.30** Roads Less Travelled. **9.00** iFish. **9.30** Escape Fishing With ET. **10.00** MacGyver. **Noon** NCIS: Los Angeles. **1.00** NCIS: New Orleans. **2.00** Bull. **3.00** Bondi Rescue. **3.30** The Love Boat. **4.30** Star Trek: The Next Generation. **5.30** MacGyver. **7.30** NCIS. **8.30** Bull. **10.30** The Code. **11.30** 48 Hours. **12.30am** Home Shopping. **2.00** Tommy. **3.00** Star Trek: The Next Generation. **4.00** MacGyver.

10 PEACH (52) **6am** The Late Show With Stephen Colbert. **7.00** Friends. **8.00** Becker. **9.00** The King Of Queens. **10.00** Friends. **10.30** The Middle. **Noon** The Living Room. **1.00** Frasier. **2.00** Becker. **3.00** The King Of Queens. **4.00** Becker. **5.00** Frasier. **6.00** Friends. **8.00** The Big Bang Theory. **9.30** Seinfeld. **11.00** Frasier. **Midnight** Home Shopping. **1.30** The Late Show With Stephen Colbert. **2.30** The Late Show With James Corden. **3.30** The King Of Queens. **4.30** Home Shopping.

Friday, November 25

ABC TV (2)

6.00 News Breakfast. **9.00** ABC News Mornings. **10.00** Q+A. (R) **11.10** Secrets Of The Museum. (R) **12.00** ABC News At Noon. **1.00** Significant Others. (Final, Mals, R) **1.50** Doc Martin. (PG, R) **2.40** Poh's Kitchen. (R) **3.10** Gardening Australia. (R) **4.10** Long Lost Family. (PG, R) **5.00** Back Roads. (R) **5.30** Hard Quiz. (PG, R)

6.00 The Drum. Analysis of the day's news. **7.00 ABC News.** Takes a look at today's top stories. **7.30 Gardening Australia.** Advice for the home gardener. **8.30 Frankly.** (Final) Fran Kelly chats with some of the biggest names and brains in Australia and from around the globe. **9.10 All Creatures Great And Small.** (Final, PG) James' parents come to visit. Tristan's next steps are informed by a chance meeting with an outsider. **9.55 Fisk.** (Ml, R) George is feeling overworked. **10.25 Troppo.** (Mal, R) Ted and Amanda make a discovery. **11.20 ABC Late News.** Detailed coverage of the day's events. **11.35 To Be Advised.** **12.20 Rage.** (MA15+adhlnsv)

ABC TV PLUS (22) **6am** Children's Programs. **5.55pm** Reef School. **6.05** Ben And Holly. **6.20** Bluey. **7.30** Spicks And Specks. **8.00** Hard Quiz. **8.30 MOVIE:** Cemetery Junction. (2010, MA15+) **10.05** Doctor Who. **11.05** Staged. **11.30** Archer. **12.10am** QI. **12.40** George Clarke's Amazing Spaces. **1.25** ABC News Update. **1.30** Close. **5.00** Hoot Hoot Go! **5.10** Dot. **5.25** Pablo. **5.35** Guess How Much I Love You. **5.45** Late Programs.

NITV (34) **6am** Morning Programs. **1.50pm** Anthem Sessions Interstitials. **2.00** Shortland St. **2.30** The Cook Up. **3.00** Jarjums. **4.35** Spartakus And The Sun Beneath The Sea. **5.00** Our Stories. **5.30** NITV News: Nula. **6.00** Bamay. **6.40** Arctic Secrets. **7.30** Barrumbi Kids. **8.00 MOVIE:** Teenage Mutant Ninja Turtles. (1990, PG) **9.40** First Nations Bedtime Stories. **9.50** Going Places With Ernie Dingo. **10.50** Late Programs.

SBS (3)

6.00 Soccer. 2022 FIFA World Cup. Group G. Brazil v Serbia. Continued. **8.00** DD India Prime Time News. **8.30** Soccer. 2022 FIFA World Cup. Group H. Uruguay v Korea Republic. Replay. **11.30** Soccer. 2022 FIFA World Cup. Group H. Portugal v Ghana. Replay. **2.30** Soccer. 2022 FIFA World Cup. Group G. Brazil v Serbia. Replay. **5.30** ABC World News Tonight With David Muir.

6.00 FIFA World Cup 2022 Daily World Cup Show. (R) Highlights, previews, interviews and analysis of the FIFA World Cup. Presented by Claudio Fabiano **6.30 FIFA World Cup 2022 Preview Show.** (R) A preview of FIFA World Cup matches, as well as a look at the latest news and team and player profiles. **7.00 SBS World News.** **8.00 Soccer.** 2022 FIFA World Cup. Group B. Wales v Iran. From Ahmad bin Ali Stadium, Al Rayyan, Qatar. Hosted by Richard Bayliss and Niai Owens, with football analysts Mark Bosnich, Craig Foster and Sarah Walsh. **11.00 Soccer.** 2022 FIFA World Cup. Group A. Qatar v Senegal. **2.00 Soccer.** 2022 FIFA World Cup. Group A. Netherlands v Ecuador. **5.00 Soccer.** 2022 FIFA World Cup. Group B. England v USA.

SBS VICELAND (31) **6am** Morning Programs. **12.50pm** The Source. **1.40** Figure Skating. ISU Grand Prix. 2020 Rostelecom Cup. Replay. **3.40** WorldWatch. **5.05** Shortland St. **5.35** Joy Of Painting. **6.05** Jeopardy! **6.30** FIFA World Cup 2022 Daily World Cup Show. **7.00** FIFA World Cup 2022 Preview Show. **7.30** News. **7.35** 8 Out Of 10 Cats. **8.30** Hoarders. **9.20** The Language Of Love. (Premiere) **10.20** Late Programs.

SBS WORLD MOVIES (32) **6am** Maudie. Continued. (2016, PG) **8.05** Asterix And Obelix: Mission Cleopatra. (2002, PG, French) **10.00** Churchill. (2017, M) **Noon** Flawless. (2007, M) **2.00** Love And Friendship. (2016, PG) **3.40** The Odyssey. (2016, PG, French) **5.55** The Sound Of Silence. (2019, PG) **7.30** Journey's End. (2017) **9.30** Snatch. (2000, MA15+) **11.25** The Doors. (1991, MA15+) **2am** Late Programs.

SEVEN (6)

6.00 Sunrise. **9.00** The Morning Show. (PG) **11.30** Seven Morning News. **12.00 MOVIE:** The Maltese Falcon. (1941, PGav, R) **2.00** House Of Wellness. (PG) **3.00** The Chase. (R) **4.00** Seven News At 4. **5.00** The Chase Australia.

6.00 Seven News. **7.00** Better Homes And Gardens. Dr Harry Cooper teams up with Adam Doville to build obstacles for dogs. **8.30 MOVIE:** Green Book. (2018, Ml, R) Based on a true story. In the '60s, a distinguished African-American pianist hires a tough-talking Italian-American bouncer as his chauffeur for a concert tour through America's Midwest and Deep South. Viggo Mortensen, Mahershala Ali, Linda Cardellini. **11.10** To Be Advised. **12.50** Black-ish. (PGa, R) Dre realises he's out of touch with his roots so he takes the family to his home town of Compton. **2.00** Home Shopping. (R) **4.00** Million Dollar Minute. (R) Hosted by Simon Reeve. **5.00** NBC Today. News and current affairs.

7MATE (60) **6am** Morning Programs. **7.30** Creek To Coast. **8.00** A Football Life. **9.00** America's Game. **10.00** American Pickers. **11.00** American Restoration. **11.30** Shipping Wars. **1pm** Scrap Kings. **3.00** Timbersports. **3.30** Hustle & Tow. **4.30** Aussie Lobster Men. **5.30 MOVIE:** After Earth. (2013, PG) **7.30 MOVIE:** Men In Black II. (2002, PG) **9.20 MOVIE:** Men In Black III. (2012, M) **11.30** Late Programs.

7TWO (62) **6am** Morning Programs. **8.00** Cruise Away. **8.30** Million Dollar Minute. **9.00** DVine Living. **9.30** NBC Today. **Noon** Emmerdale. **12.30** Coronation Street. **1.00** Sons And Daughters. **3.00** House Of Wellness. **4.00** Million Dollar Minute. **4.30** Medical Emergency. **5.00** Animal Rescue. **5.30** Escape To The Country. **6.30** Bargain Hunt. **7.30** Border Security: International. **8.30** Escape To The Country. **11.30** Late Programs.

NINE (8)

6.00 Today. **9.00** Today Extra. (PG) **11.30** Morning News. **12.00 MOVIE:** Blueprint To The Heart. (2020, PGa, R) **1.45** Garden Gurus Moments. (R) **2.00** Pointless. (PG) **3.00** Tipping Point. (PG, R) **4.00** Millionaire Hot Seat. (R) **5.00** Afternoon News.

6.00 Nine News. **7.00** A Current Affair. **7.30** Taronga: Who's Who In The Zoo: Feeding The Zoo. (PGam) Takes a look at food preparation. **8.30 MOVIE:** Bridget Jones: The Edge Of Reason. (2004, Mdls, R) Bridget Jones fears her relationship with Mark Darcy is in jeopardy after meeting his glamorous colleague. Renée Zellweger, Colin Firth, Hugh Grant. **10.35 MOVIE:** Knocked Up. (2007, MA15+dls, R) A journalist has a one-night stand. Seth Rogen. **1.00** Great Australian Detour. (R) **1.30** TV Shop: Home Shopping. (R) **4.00** Take Two. (R) **4.30** Global Shop. (R) **5.00** TV Shop: Home Shopping. (R) **5.30** Skippy The Bush Kangaroo. (R)

9GEM (81) **6am** TV Shop. **7.00** Creflo Dollar Ministries. **7.30** TV Shop: Home Shopping. **10.30** Pointless. **11.30** Golf. PGA Australia. Australian PGA Championship. Second round. **4.30pm** Antiques Roadshow. **5.00** Keeping Up Appearances. **5.30** Murder, She Wrote. **6.30** Antiques Roadshow. **7.30** Antiques Downunder. **8.00** Antiques Roadshow Detectives. **8.40 MOVIE:** Cast Away. (2000, M) **11.30** Late Programs.

9GO! (82) **6am** Children's Programs. **Noon** The Carrie Diaries. **1.00** LA Clippers Dance Squad. **2.00** Full House. **3.00** The Nanny. **3.30** 3rd Rock. **4.00** That '70s Show. **4.30** Raymond. **5.30** Children's Programs. **5.40 MOVIE:** The Pink Panther 2. (2009, PG) **7.30 MOVIE:** The Mummy. (2017, M) **9.35 MOVIE:** The Mummy: Tomb Of The Dragon Emperor. (2008, M) **11.45** The Emily Attack Show. **12.30am** Late Programs.

TEN (5)

6.00 The Talk. (PGa) **7.00** Judge Judy. (PG, R) **7.30** The Bold And The Beautiful. (PG, R) **8.00** 10 News First: Breakfast. **8.30** Studio 10. (PG) **12.00** Dr Phil. (PGa) **1.00** To Be Advised. **2.30** Good Chef Bad Chef. (R) **3.00** Judge Judy. (PG, R) **3.30** My Market Kitchen. (R) **4.00** Farm To Fork. **4.30** The Bold And The Beautiful. (PG) **5.00** 10 News First.

6.30 The Project. A look at the day's news and events. **7.30** The Living Room. (Final) Miguel Maestre creates tasty Christmas fare. **8.30** The Graham Norton Show. (PGa, R) Graham Norton is joined by Paul Mescal, Michaela Coel, Winston Duke, Emma Corrin and Richard Ayoade. **9.30** Just For Laughs Australia. (MA15+ls, R) Stand-up comedy performances from Judith Lucy, Dilruk Jayasinha and Michelle Brasier. **10.00** Just For Laughs Uncut. (MA15+als, R) Hosted by Nikki Osborne. **10.30** Luke Heggie: Tiprat. (MA15+ls, R) A performance by comedian Luke Heggie. **11.40** The Project. (R) **12.40** The Late Show With Stephen Colbert. (PG) **1.30** Home Shopping. (R)

10 BOLD (51) **6am** Home Shopping. **8.00** Motor Racing. Formula 1. Race 22. Abu Dhabi Grand Prix. Replay. **9.00** iFish. **9.30** Escape Fishing With ET. **10.00** MacGyver. **Noon** NCIS: Los Angeles. **1.00** NCIS: New Orleans. **2.00** Bull. **3.00** Bondi Rescue. **3.30** The Love Boat. **4.30** Star Trek: The Next Generation. **5.30** MacGyver. **7.30** NCIS. **8.30** NCIS: Los Angeles. **10.20** Evil. **11.20** Star Trek: Discovery. **12.15am** Shopping. **2.15** Late Programs.

10 PEACH (52) **6am** The Late Show With Stephen Colbert. **7.00** NBL Slam. **7.30** Seinfeld. **9.00** Becker. **10.00** The Middle. **11.30** The King Of Queens. **12.30pm** Frasier. **1.30** Seinfeld. **3.00** The King Of Queens. **4.00** Becker. **5.00** Frasier. **6.00** Friends. **8.00** The Big Bang Theory. **9.30** Mom. **11.00** Frasier. **Midnight** Shopping. **1.30** Stephen Colbert. **2.30** James Corden. **3.30** Becker. **4.30** Shopping. **5.30** Joseph Prince.



Order now on aussietoysonline.com.au

Saturday, November 26

ABC TV (2)

6.00 Rage. (PG) **7.00** Weekend Breakfast. **9.00** Rage. (PG) **12.00** ABC News At Noon. **12.30** Vera. (Mad, R) **2.00** Midsomer Murders. (PG, R) **3.30** Stuff The British Stole. (PG, R) **4.20** Spicks And Specks. (PG) **5.10** Landline. (R) **5.35** Nigella's Cook, Eat, Repeat. (R)

6.10 Secrets Of The Museum. Part 5 of 5. **7.00** ABC News. Takes a look at today's top stories. **7.30** Doc Martin. (PG) Martin treats Mrs Moore. **8.20** Shetland. (Mal) In the aftermath of the diving incident, the team searches for a link between the two bodies. **9.20** Significant Others. (Final, Mals, R) Funeral planning leads to surprise healing as questions are answered and vows for a new future are made. **10.10 MOVIE:** Danny And The Human Zoo. (2015, Mlsv, R) An account of the early life of Lenny Henry. Kascion Franklin, Lenny Henry. **11.40** Rage. (MA15+adhlnsv)

ABC TV PLUS (22) **6am** Children's Programs. **7pm** Andy And The Band. **7.20** Bluey. **7.30** Spicks And Specks. **8.00** QI. **8.30** Melbourne International Comedy Festival 2021: Opening Night. **9.30** Whose Line Is It Anyway? **10.15** Would I Lie To You? **10.45** Doctor Who. **Midnight** The Office. **12.50** Friday Night Dinner. **1.15** Universe With Brian Cox. **2.15** ABC News Update. **2.20** Close. **5.00** Hoot Hoot Go! **5.10** Dot. **5.25** Pablo. **5.35** Late Programs.

NITV (34) **6am** Morning Programs. **2pm** Cultural Connections Immersion Festival. **3.00** From The Heart Of Our Nation: The Sunset Concert. **5.00** Yarrabah! The Musical. **5.30** Power To The People. **6.00** Pacific Island Food Revolution. **6.50** News. **7.00** On Country Kitchen. **7.30** The Beaver Whisperers. **8.30 MOVIE:** Raw Deal. (1986, MA15+) **10.20** Kungka Kunpu. **10.30** Artie: Our Tribute To A Legend. **11.00** Late Programs.

SBS (3)

6.00 Soccer. 2022 FIFA World Cup. Group B. England v USA. Continued. **8.00** Soccer. 2022 FIFA World Cup. Group G. Switzerland v Cameroon. Replay. **11.00** Soccer. 2022 FIFA World Cup. Group A. Netherlands v Ecuador. Replay. **2.00** Soccer. 2022 FIFA World Cup. Group B. England v USA. Replay. **5.00** FIFA World Cup 2022 Daily World Cup Show. (R) **5.30** FIFA World Cup 2022 Preview Show. (R)

6.00 SBS World News. **7.00** Soccer. 2022 FIFA World Cup. Group D. Tunisia v Australia. From Al Janoub Stadium, Al Wakrah, Qatar. Hosted by Richard Bayliss and Niai Owens, with football analysts Mark Bosnich, Craig Foster and Sarah Walsh. **11.00** Soccer. 2022 FIFA World Cup. Group C. Poland v Saudi Arabia. From Education City Stadium, Al Rayyan, Qatar. Hosted by Richard Bayliss and Niai Owens, with football analysts Mark Bosnich, Craig Foster and Sarah Walsh. **2.00** Soccer. 2022 FIFA World Cup. Group D. France v Denmark. From Stadium 974, Ras Abu Aboud, Qatar. **5.00** Soccer. 2022 FIFA World Cup. Group C. Argentina v Mexico.

SBS VICELAND (31) **6am** Morning Programs. **1.35pm** Gymnastics. FIG Trampoline World Cup Series. H'lights. **2.35** Sportswoman. **3.05** WorldWatch. **4.35** Mastermind Aust. **5.35** Vs Arashi. **6.30** FIFA World Cup 2022 Daily World Cup Show. **7.00** FIFA World Cup 2022 Preview Show. **7.30** Impossible Engineering. **8.30** Stuck In The Suez. **9.25** The Artist's View. **9.55** Adam Ruins Everything. **10.20** Late Programs.

SBS WORLD MOVIES (32) **6am** The Movie Show. **6.30** The Sound Of Silence. (2019, PG) **8.10** Polina. (2016, PG, French) **10.05** Charlie And Boots. (2009, M) **Noon** Monk Comes Down The Mountain. (2015, M, Cantonese) **2.05** Maudie. (2016, PG) **4.15** A Raisin In The Sun. (1961, PG) **6.35** On A Clear Day. (2005, PG) **8.30** Hope Gap. (2019, M) **10.25** Elle. (2016, MA15+, French) **12.50am** The Happy Prince. (2018, MA15+) **2.50** Late Programs.

SEVEN (6)

6.00 NBC Today. **7.00** Weekend Sunrise. **10.00** The Morning Show: Weekend. (PG) **12.00** Better Homes And Gardens. (R) **1.00** To Be Advised. **5.00** Seven News Adelaide. **5.30** Discover With RAA Travel. (PG) Presented by Kelly Golding.

6.00 Seven News. **7.00** Border Security: Australia's Front Line. (PG, R) Officers make an interesting find. **7.30 MOVIE:** The Santa Clause. (1994, G, R) A man transforms into Santa Claus. Tim Allen, Eric Lloyd. **9.35 MOVIE:** Unstoppable. (2010, Ml, R) Two men try to stop a runaway freight train. Denzel Washington, Chris Pine. **11.35** World's Deadliest: Days Out. (Ml, R) **12.35** Black-ish. (PGa, R) **1.30** Harry's Practice. (R) **2.00** Home Shopping. (R) **4.00** It's Academic. (R) **5.00** House Of Wellness. (PG, R)

7MATE (60) **6am** Morning Programs. **10.00** Step Outside. **10.30** MXTV. **11.00** On Tour With Allan Border. **11.30** Your 4x4. **Noon** Dipper's Backyard BBQ Wars. **12.30** Timbersports. **1.00** Bokesworld. **1.30** Australia ReDiscovered. **2.00** Motor Racing. Sunraysia Safari. **3.00** Rides Down Under: Workshop Wars. **4.00 MOVIE:** Ben-Hur. (1959, PG) **8.30 MOVIE:** Forrest Gump. (1994, M) **11.25** Late Programs.

7TWO (62) **6am** Home Shopping. **8.30** Harry's Practice. **9.00** Three Wide No Cover. **10.00** Travel Oz. **11.30** Horse Racing. Country Classic Race Day. Zipping Classic Day. **5pm** Border Security: International. **5.30** Mighty Ships. **6.30** The Yorkshire Vet. **8.30** Escape To The Country. **10.30** I Escaped To The Country. **11.30** Alan Carr's Adventures With Agatha Christie. **12.30am** The Yorkshire Vet. **1.30** Late Programs.

NINE (8)

6.00 Getaway. (PG, R) **6.30** A Current Affair. (R) **7.00** Weekend Today. **10.00** Today Extra: Saturday. (PG) **11.30** Golf. PGA Australia. Australian PGA Championship. Third round. **4.30** Driving Test. (PG, R) **5.00** News: First At Five. **5.30** Getaway. (PG) The team goes tramping in New Zealand.

6.00 Nine News Saturday. **7.00** A Current Affair. **7.30 MOVIE:** The Bourne Ultimatum. (2007, Mv, R) A former secret agent is once again hunted by the agency that created him. Matt Damon, Julia Stiles. **9.40 MOVIE:** The Bourne Legacy. (2012, Mav, R) A top-secret government project, involving the creation of super soldiers, is threatened with exposure. Jeremy Renner, Rachel Weisz. **12.05 MOVIE:** Collateral Beauty. (2016, Ml, R) Will Smith. **1.50** Talking Honey. (PGa, R) **2.00** TV Shop: Home Shopping. (R) **4.30** Global Shop. (R) **5.00** TV Shop: Home Shopping. (R) **5.30** Skippy The Bush Kangaroo. (R)

9GEM (81) **6am** Morning Programs. **8.30** TV Shop. **10.00** My Favorite Martian. **10.30 MOVIE:** Swallows And Amazons. (1974) **12.30pm** Antiques Downunder. **1.00** Antiques Roadshow Detectives. **1.40** Edgar Wallace Mysteries. **3.00 MOVIE:** Muscle Beach Party. (1964) **5.00 MOVIE:** How To Murder Your Wife. (1965, PG) **7.30 MOVIE:** Something's Gotta Give. (2003, M) **10.00 MOVIE:** The Birdcage. (1996, M) **12.30am** Late Programs.

9GO! (82) **6am** Children's Programs. **1.10pm** Revolution. **2.10** Motor Racing. FIA World Endurance C'ship. End of Season Review. **3.15 MOVIE:** Fantastic Mr. Fox. (2009, PG) **5.00 MOVIE:** Babe: Pig In The City. (1998) **7.00 MOVIE:** Nanny McPhee And The Big Bang. (2010) **9.10 MOVIE:** Something Borrowed. (2011, M) **11.30** Duncanville. **Midnight** Kardashians. **2.00** Baywatch. **2.50** Late Programs.

TEN (5)

6am Morning Programs. **8.30** What's Up Down Under. (R) **9.00** Australia By Design: Architecture. (PG, R) **9.30** St!O. (PG) **12.00** Living Room. (R) **1.00** Everyday Gourmet. (R) **1.30** Healthy Homes Aust. (Final) **2.00** Well Traveller. (PGa, R) **2.30** Cook It With Luke. (R) **3.00** What's Up Down Under. **3.30** My Market Kitchen. (R) **4.00** Farm To Fork. (PG, R) **4.30** Taste Of Aust. (R) **5.00** News.

6.00 Bondi Rescue. (PGa, R) **6.30** Hungry. (Premiere) Presented by George Calombaris and Sarah Todd. **7.00** Jamie's One-Pan Wonders. Jamie Oliver cooks a tray-baked salmon in a bag. **7.30** Blue Bloods. (Mv) Danny and Jamie clash over a gang shooting. **8.30** CSI: Vegas. (Mav) Max leads her team to investigate the death of a prestigious Michelin-starred chef. **9.30** NCIS. (Ma, R) When an NCIS agent turns up dead and Kasie is suddenly unaccounted for, the team must work quickly to find the killer. **10.30** To Be Advised. **11.30** FBI: Most Wanted. (Mav, R) **12.30** Home Shopping. (R) **4.30** Authentic. (PG) **5.00** Hour Of Power.

10 BOLD (51) **6am** Home Shopping. **9.00** Snap Happy. **10.00** Pat Callinan's 4x4 Adventures. **11.00** Escape Fishing With ET. **11.30** Healthy Homes. **Noon** The Love Boat. **1.00** Star Trek: The Next Generation. **2.00** A-League All Access. **2.30** Roads Less Travelled. **3.00** MacGyver. **5.00** Reel Action. **5.30** iFish. **6.00** Waltzing Jimeoin. **6.30** Scorpion. **7.30** NCIS. **8.30** NCIS: Los Angeles. **10.20** MacGyver. **11.15** Late Programs.

10 PEACH (52) **6am** The Late Show With Stephen Colbert. **7.00** The King Of Queens. **8.00** Frasier. **9.00** Becker. **10.00** Friends. **11.30** The King Of Queens. **12.30pm** Friends. **1.00** To Be Advised. **3.00** Friends. **6.00** The Big Bang Theory. **10.15** Friends. **12.15am** Home Shopping. **1.45** Mom. **2.15** NBL Slam. **2.45** Broke. **4.30** Home Shopping.

Sunday, November 27

ABC TV (2)

6.00 Rage. (PG) **7.00** Weekend Breakfast. **9.00** Insiders. **10.00** Offsiders. **11.00** Compass. (PG, R) **11.30** Songs Of Praise. **12.00** ABC News At Noon. **12.30** Landline. (Final) **1.30** Gardening Australia. (R) **2.30** Question Everything. (Mls, R) **3.00** Fake Or Fortune? (R) **4.10** The Pacific: In The Wake Of Captain Cook With Sam Neill. (PG, R) **4.55** Art Works. (Final, PG, R) **5.25** Antiques Roadshow. (R)

6.25 Frankly. (Final, R) Presented by Fran Kelly. **7.00 ABC News Sunday.** **7.30 Death In Paradise.** (PG, R) The team investigates the death of a cyclist. **8.30 MOVIE: Lion.** (2016, PGa, R) After becoming lost on the streets of Calcutta, India, thousands of kilometres from home, a five-year-old boy is adopted by a couple in Australia. Twenty-five years later, he sets out to find his family. Dev Patel, Nicole Kidman, Rooney Mara. **10.25 Miniseries: Ridley Road.** (PG, R) Part 1 of 4. **11.25 Mystery Road: Origin.** (Mal, R) Jay struggles with the recent tragedy. **12.20 The Heights.** (PG, R) **2.10 Rage.** (MA15+adhlnsv) **4.00 Classic Countdown.** (PG, R) **5.00** Insiders. (R)

ABC TV PLUS (22) **6am** Children's Programs. **6.40pm** Andy's Dinosaur Adventures. **7.00** Andy And The Band. **7.20** Bluey. **7.30** Australia Remastered. **8.30** Louis Theroux's LA Stories. **9.30** Laura's Choice. **10.30** Days Like These With Diesel. (Final) **11.25 MOVIE:** Cemetery Junction. (2010, MA15+) **1am** Long Lost Family. **1.45** ABC News Update. **1.50** Close. **5.00** Hoot Hoot Go! **5.10** Dot. **5.25** Baby Jake. **5.35** Late Programs.

NITV (34) **6am** Morning Programs. **Noon** Rugby League. Koori Knockout. **1.00** Rugby Union. Ella 7s. Replay. **1.25** Away From Country. **2.25** The South Sydney Story. **2.55** Football. NTFL. Women's. Under-18s. **4.25** Football. NTFL. Men's. Under-18s. **5.55** Spirit Talker. **6.20** News. **6.30** Wild West. **7.30** Outlier: The Story Of Katherine Johnson. **8.30** Sherpa: Trouble On Everest. **10.10** Killing Patient Zero. **11.55** Late Programs.

SBS (3)

6.00 Soccer. 2022 FIFA World Cup. Group C. Argentina v Mexico. Continued. **8.00** DD India Prime Time News. **8.30** Soccer. 2022 FIFA World Cup. Group D. France v Denmark. Replay. **11.30** Soccer. 2022 FIFA World Cup. Group C. Argentina v Mexico. Replay. **2.00** Soccer. 2022 FIFA World Cup. Group D. Tunisia v Australia. Replay. **5.30** France 24 English News.

6.00 FIFA World Cup 2022 Daily World Cup Show. (R) Highlights, previews, interviews and analysis of the FIFA World Cup. Presented by Claudio Fabiano **6.30 FIFA World Cup 2022 Preview Show.** (R) A preview of FIFA World Cup matches, as well as a look at the latest news and team and player profiles. **7.00 SBS World News.** **8.00 Soccer.** 2022 FIFA World Cup. Group E. Japan v Costa Rica. From Ahmad bin Ali Stadium, Al Rayyan, Qatar. **11.00 Soccer.** 2022 FIFA World Cup. Group F. Belgium v Morocco. **2.00 Soccer.** 2022 FIFA World Cup. Group F. Croatia v Canada. **5.00 Soccer.** 2022 FIFA World Cup. Group E. Spain v Germany.

SBS VICELAND (31) **6am** Morning Programs. **Noon** The Rising. **12.30** Motorcycle Racing. Austn Superbike C'ship. **3.30** The Rising. **4.00** WorldWatch. **4.30** Insight. **5.30** The Bee Whisperer. **6.30** FIFA World Cup 2022 Daily World Cup Show. **7.00** FIFA World Cup 2022 Preview Show. **7.30** Jack Whitehall's Got, Got, Need. **8.30** The UnXplained. **9.20** QAnon: The Search For Q. (Return) **10.20** Late Programs.

SBS WORLD MOVIES (32) **6am** Asterix And Obelix: Mission Cleopatra. Continued. (2002, PG, French) **6.40** On A Clear Day. (2005, PG) **8.30** Viceroy's House. (2017, PG) **10.30** Elementary. (2016, M, French) **12.30pm** Journey's End. (2017) **2.30** The Sound Of Silence. (2019, PG) **4.05** Polina. (2016, PG, French) **6.05** Brideshead Revisited. (2008, PG) **8.30** Benedetta. (2021, MA15+, French) **10.55** Late Programs.

SEVEN (6)

6.00 NBC Today. **7.00** Weekend Sunrise. **10.00 The Morning Show: Weekend.** (PG) **12.00 House Of Wellness.** (PG, R) **1.00 Border Security: Australia's Front Line.** (PG, R) **1.30 To Be Advised.** **5.00 Seven News Adelaide.** **5.30 South Aussie With Così.** (PG)

6.00 Seven News. **7.00 7NEWS Spotlight.** **8.00 Motorway Patrol.** (Return, PG) Woolly wanderers meet the traffic head on, riding an electric scooter over the Auckland Harbour Bridge. **8.30 MOVIE: Salt.** (2010, Mlv, R) After she is accused of being a Russian spy, a CIA agent goes on the run and tries to prove her innocence. Angelina Jolie, Liev Schreiber, Chiwetel Ejiofor. **10.30 To Be Advised.** **11.40 Autopsy USA: Patty Duke.** (MA15+ad, R) **12.40 Medical Emergency.** (PGa, R) **2.00 Home Shopping.** (R) **3.30 Million Dollar Minute.** (R) **4.00 NBC Today.** **5.00** Seven Early News. **5.30** Sunrise.

7MATE (60) **6am** Morning Programs. **10.00** Hook Me Up! **11.00** My Fishing Place. **11.30** Step Outside. **Noon** The Fishing Show By AFN. **1.00** Hook, Line And Sink. **2.00** On The Fly. **2.30** Merv Hughes Fishing. **3.00** Fish'n Mates. **4.00** Fishing Addiction. **5.00** Last Stop Garage. **6.00** Pawn Stars. **6.30 MOVIE:** The Time Machine. (2002, PG) **8.30 MOVIE:** Apocalypse Now. (1979, MA15+) **11.45** Late Programs.

7TWO (62) **6am** Morning Programs. **11.00** House Of Wellness. **Noon** Escape To The Country. **1.00** The Surgery Ship. **2.00** DVine Living. **2.30** Discover With RAA Travel. **3.00** South Aussie With Così. **3.30** Our Town. **4.00** My Greek Odyssey. **5.00** I Escaped To The Country. **6.00** Air Crash Investigation: Special Report. **7.00** Border Security. **8.30** Heathrow. **9.30** Air Crash Investigation. **11.30** Late Programs.

NINE (8)

6.00 Our State On A Plate. (PG) **6.30** A Current Affair. (R) **7.00** Weekend Today. **10.00** Sports Sunday. (PG) **11.00** Reel Destinations: Lodge Life. **11.30 Golf.** PGA Australia. Australian PGA Championship. Final round. **4.30 Outdoors Indoors.** **5.00 News: First At Five.** **5.30 Hello SA.** (PG)

6.00 Nine News Sunday. **7.00 LEGO Masters Bricksmas Special.** Part 2 of 2. **8.40 60 Minutes.** Current affairs program, investigating, analysing and uncovering the issues affecting all Australians. **9.40 Nine News Late.** Takes a look at the latest news and events from Australia and around the world. **10.10 The First 48: The Other Wife.** (Mal) A look at the murder of Andrew Harman. **11.10 Murder In A Small Town.** (MA15+av) Part 2 of 2. **12.05 Tipping Point.** (PG, R) **1.00 Outdoors Indoors.** **1.30 TV Shop: Home Shopping.** (R) **4.00 Believer's Voice Of Victory.** (PGa) **4.30 Take Two.** (R) **5.00** News Early Edition. **5.30** Today.

9GEM (81) **6am** Morning Programs. **7.30** In Touch. **8.00** Beyond Today. **8.30** The Incredible Journey. **9.00** TV Shop. **10.00** Skippy. **10.30** My Favorite Martian. **11.00** Women's Footy. **Noon MOVIE:** Pool Of London. (1951, PG) **1.45 MOVIE:** Scott Of The Antarctic. (1948) **4.00 MOVIE:** Moby Dick. (1956) **6.30** Bondi Vet. **7.30** Mega Zoo. **8.30 MOVIE:** The Zookeeper's Wife. (2017, M) **11.00** Late Programs.

9GO! (82) **6am** Children's Programs. **1.30pm** To Be Advised. **2.00** Rich Kids Go Skint. **3.00** Full Bloom. **4.00** Dance Moms. **5.00** About A Boy. **5.30** Children's Programs. **5.45 MOVIE:** Astro Boy. (2009, PG) **7.30 MOVIE:** Fast & Furious 6. (2013, M) **10.05 MOVIE:** Baby Driver. (2017, MA15+) **12.20am** Killing Versace: Hunt For A Serial Killer. **1.20** I Am Cait. **2.15** I've Got A Text With Josh And Flex! **2.50** Late Programs.

TEN (5)

6.00 Mass. **6.30** Turning Point. (PGa) **7.00** Joseph Prince. **7.30** Joel Osteen. **8.00** Living Room. (R) **9.00** Destination Dessert. (Return) **9.30** Studio 10: Sunday. (PG) **12.00** The Challenge Australia. (PGL, R) **2.00** Farm To Fork. (PG, R) **2.30** Jamie's One-Pan Wonders. (R) **3.00** Cook It With Luke. **3.30** Well Traveller. (PGa) **4.00** All 4 Adventure. (Return) **5.00** 10 News First.

6.30 The Sunday Project. A look at the day's news. **7.30 The Graham Norton Show.** (Mal) Graham Norton is joined by Bruce Springsteen, Anya Taylor-Joy, Anna Maxwell Martin and Mo Gilligan. **8.30 NCIS: Hawai'i.** (Mdv) When a US Marine corporal dies in a tide pool after being exposed to fentanyl, the NCIS team must quickly find the source of the drugs. Alex talks about taking a gap year. Ernie reveals some personal news. **9.30 FBI.** (Mv, R) After a man is killed by an explosive package shipped to his home, the team tries to capture the sender. **11.30 The Sunday Project.** (R) A look at the day's news. **12.30 Home Shopping.** (R) **4.30 CBS Mornings.**

10 BOLD (51) **6am** Morning Programs. **9.00** 4x4 Adventures. **10.00** Reel Action. **11.00** Healthy Homes Aust. **11.30** Roads Less Travelled. **Noon** Truck Hunters. **12.30** Scorpion. **1.30** Pooches At Play. **2.00** Destination Dessert. **2.30** A-League All Access. **3.00** Waltzing Jimeoin. **3.30** The FBI Declassified. **4.30** What's Up Down Under. **5.00** Reel Action. **6.00** Bondi Rescue. **6.30** MacGyver. **7.30** NCIS. **10.20** 48 Hours. **11.15** Late Programs.

10 PEACH (52) **6am** The Big Bang Theory. **8.30** The Middle. **10.30** Broke. **12.30pm** Friends. **1.00** Two And A Half Men. **1.30** Basketball. NBL. Round 8. New Zealand Breakers v Brisbane Bullets. **3.30** Basketball. NBL. Round 8. South East Melbourne Phoenix v Illawarra Hawks. **5.30** Two And A Half Men. **6.00** The Big Bang Theory. **9.00** Friends. **Midnight** Shopping. **1.30 MOVIE:** The Lucky One. (2012, M) **3.30** Broke. **4.30** Shopping.

CYBER MONDAY SALE

48 Hour Sale

Starts Midnight 28/11/2022 to 29/11/2022 or until sold out.

AUSSIE TOYS ONLINE

aussietoysonline.com.au



12578677-MS47-22

Monday, November 28

ABC TV (2)

6.00 News Breakfast. **9.00** ABC News Mornings. **10.00** Landline. (Final, R) **11.00** Antiques Roadshow. (R) **12.00** ABC News At Noon. **1.00** Rosehaven. (PG, R) **1.25** Poh's Kitchen Lends A Hand. (R) **2.00** Parliament Question Time. **3.00** Gardening Australia. (R) **4.10** Long Lost Family. (PG, R) **4.55** Back Roads. (R) **5.25** Hard Quiz. (PG, R)

6.00 The Drum. **7.00** ABC News. **7.30** 7.30. **8.00** Australian Story. Austral-ians tell personal stories. **8.30** Media Watch. (PG) Hosted by Paul Barry. **8.50 MOVIE: The Australian Dream.** (2019, MA15+I, R) Explores the life of Adam Goodes. Adam Goodes, Stan Grant. **9.50** Freeman. (R) **10.50** ABC Late News. **11.05** The Business. (R) **11.20** Q+A. (R) **12.25** The Pacific: In The Wake Of Captain Cook With Sam Neill. (PG, R) **1.15** Parliament Question Time. **2.15** Total Control. (MA15+I, R) **3.10** Rage. (MA15+adhlnsv) **4.25** The Drum. (R) **5.25** 7.30. (R)

ABC TV PLUS (22) **6am** Children's Programs. **7.10pm** Shaun The Sheep. **7.20** Bluey. **7.30** Universe With Brian Cox. **8.30** Long Lost Family. **9.20** George Clarke's Amazing Spaces. **10.10** Catalyst. **11.05** To Be Advised. **11.50** Brian Johnson's A Life On The Road. **12.35am** Penn & Teller: Fool Us. **1.15** Staged. **1.40** Would I Lie To You? **2.10** ABC News Update. **2.15** Close. **5.00** Hoot Hoot Go! **5.10** Dot. **5.25** Baby Jake. **5.35** Late Programs.

NITV (34) **6am** Morning Programs. **1.40pm** Firekeepers Of Kakadu. **2.00** Shortland St. **2.30** The Cook Up. **3.00** Jarjums. **4.35** Spartakus And The Sun Beneath The Sea. **5.00** Our Stories. **5.30** APTN National News. **6.00** Bamay. **6.30** News. **6.40** Arctic Secrets. **7.30** How It Feels To Be Free. **8.30** Karla Grant Presents. **8.50** Black Rock. **9.20** My Maori Midwife. **9.55** Etthen Heldeli: Caribou Eaters. **10.45** Late Programs.

SBS (3)

6.00 Soccer. 2022 FIFA World Cup. Group E. Spain v Germany. Continued. **8.00** DD India Prime Time News. **8.30** Soccer. 2022 FIFA World Cup. Group E. Japan v Costa Rica. Replay. **11.30** Soccer. 2022 FIFA World Cup. Group F. Belgium v Morocco. Replay. **2.30** Soccer. 2022 FIFA World Cup. Group E. Spain v Germany. Replay. **5.30** ABC World News Tonight With David Muir.

6.00 FIFA World Cup 2022 Daily World Cup Show. (R) Highlights, previews, interviews and analysis of the FIFA World Cup. Presented by Claudio Fabiano **6.30 FIFA World Cup 2022 Preview Show.** (R) A preview of FIFA World Cup matches, as well as a look at the latest news and team and player profiles. **7.00 SBS World News.** **8.00 Soccer.** 2022 FIFA World Cup. Group G. Cameroon v Serbia. From Al Janoub Stadium, Wakrah, Qatar. **11.00 Soccer.** 2022 FIFA World Cup. Group H. Korea Republic v Ghana. **2.00 Soccer.** 2022 FIFA World Cup. Group G. Brazil v Switzerland. **5.00 Soccer.** 2022 FIFA World Cup. Group H. Portugal v Uruguay.

SBS VICELAND (31) **6am** WorldWatch. **9.30** Shortland St. **11.00** The Movie Show. **Noon** The Ghan: The Full Journey. **3.10** Lee Lin Chin's Fashionista. **3.20** Bizarre Foods. **3.45** WorldWatch. **5.05** Shortland St. **5.35** Joy Of Painting. **6.05** Jeopardy! **6.30** FIFA World Cup 2022 Daily World Cup Show. **7.00** FIFA World Cup 2022 Preview Show. **7.35** 8 Out Of 10 Cats. **8.30** Taskmaster. **9.25** Stuck. **10.00** Late Programs.

SBS WORLD MOVIES (32) **6am** Brideshead Revisited. Continued. (2008, PG) **7.25** A Raisin In The Sun. (1961, PG) **9.50** The Lunchbox. (2013, PG, Hindi) **11.45** Hope Gap. (2019, M) **1.40pm** Viceroy's House. (2017, PG) **3.40** On A Clear Day. (2005, PG) **5.30** Broken Hill. (2009, PG) **7.30** Into The White. (2012, M, Norwegian) **9.30** Bad Tales. (2020, MA15+, Italian) **11.25** Late Programs. **5.50am** Ex Files 3. (2017, PG, Mandarin)

SEVEN (6)

6.00 Sunrise. **9.00** The Morning Show. (PG) **11.30** Seven Morning News. **12.00 MOVIE: Murder By Numbers.** (2002, Malsv, R) **2.30** Border Security: International. (PG, R) **3.00** The Chase. **4.00** Seven News At 4. **5.00** To Be Advised.

6.00 Seven News. **7.00** Home And Away. (Final, PGav) **8.30** 9-1-1. (Mav) The 118 race to the rescue at a renaissance fair. Athena fears for May's life when she encounters a disturbed young man. **9.30** S.W.A.T. (Malv) The team has to work together to apprehend a band of mercenaries hired by a wealthy CEO trying to flee the country. **10.30** The Latest: Seven News. **11.00** Heartbreak Island Australia. (Mal) The top five couples admit to their motives. **12.00** The Resident. (Ma, R) **2.00** Home Shopping. (R) **4.00** NBC Today. **5.00** Seven Early News. **5.30** Sunrise.

7MATE (60) **6am** Morning Programs. **1.30pm** The Car Club. **2.00** Motor Racing. Sunraysia Safari. **3.00** Motor Racing. Motorsport Aust Off Road C'ship. Kalgoorlie Desert **3.30** Motor Racing. Supercars C'ship. Support **4.30** Last Stop Garage. **5.30** American Restoration. **6.00** American Pickers. **7.00** Pawn Stars. **7.30** American Pickers. **8.30** MOVIE: X-Men: First Class. (2011, M) **11.10** Late Programs.

7TWO (62) **6am** Shopping. **6.30** Harry's Practice. **7.00** The Surgery Ship. **8.00** Cruise Away. **8.30** Million Dollar Minute. **9.30** NBC Today. **10.30** Better Homes. **Noon** Emmerdale. **12.30** Coronation Street. **1.00** Sons And Daughters. **3.00** Weekender. **3.30** Million Dollar Minute. **4.30** Medical Emergency. **5.00** Animal Rescue. **5.30** Escape To The Country. **6.30** Bargain Hunt. **7.30** Doc Martin. **8.30** Inspector Morse. **10.50** Late Programs.

NINE (8)

6.00 Today. **9.00** Today Extra. (PG) **11.30** Morning News. **12.00** LEGO Masters Bricksmas Special. (R) **1.45** Talking Honey. (PGs, R) **2.00** Pointless. (PG) **3.00** Tipping Point. (PG, R) **4.00** Millionaire Hot Seat. (R) **5.00** Afternoon News.

6.00 Nine News. **7.00** A Current Affair. **7.30** My Mum Your Dad. Hosted by Kate Langbroek. **9.10 MOVIE: The Notebook.** (2004, PGals, R) An old man reads a love story from a faded notebook to a woman with Alzheimer's disease. Rachel McAdams, Ryan Gosling. **11.35** Nine News Late. **12.00** The Equalizer. (Mv, R) **12.50** Fishing Australia. (R) **1.20** Explore. (R) **1.30** TV Shop: Home Shopping. (R) **2.30** Global Shop. (R) **3.00** TV Shop: Home Shopping. (R) **4.00** Believer's Voice Of Victory. (PGa) **4.30** A Current Affair. (R) **5.00** News Early Edition. **5.30** Today.

9GEM (81) **6am** TV Shop. **7.00** Creflo. **7.30** TV Shop. **9.30** Newstyle Direct. **10.00** Danoz. **10.30** Pointless. **11.30** The Miracle Tiger. **Noon** Days Of Our Lives. **12.55** The Young And The Restless. **1.50** Bondi Vet. **2.50** Antiques Roadshow. **3.20** MOVIE: Baxter! (1973, PG) **5.30** Murder, She Wrote. **6.30** Antiques Roadshow. **7.30** Death In Paradise. **8.40** The Brokenwood Mysteries. **10.40** Law & Order: S.V.U. **11.40** Late Programs.

9GO! (82) **6am** Children's Programs. **Noon** The Carrie Diaries. **1.00** Queer Eye For The Straight Guy. **2.00** Surfing Australia TV. **2.30** Full House. **3.30** Raymond. **5.30** The Nanny. **6.00** 3rd Rock. **6.30** That '70s Show. **7.00** Young Sheldon. **7.30** The Weakest Link USA. **8.30** Love Island Australia. **9.30** MOVIE: Horrible Bosses. (2011, MA15+) **11.30** Young Sheldon. **Midnight** Satisfaction. (Premiere) **1.00** Late Programs.

TEN (5)

6.00 The Talk. (PGa) **7.00** Judge Judy. (PG, R) **7.30** The Bold And The Beautiful. (PG, R) **8.00** 10 News First: Breakfast. **8.30** Studio 10. (PG) **12.00** Dr Phil. (Ma) **1.00** To Be Advised. **2.00** Entertainment Tonight. **2.30** Good Chef Bad Chef. (R) **3.00** Judge Judy. (PG, R) **3.30** My Market Kitchen. (R) **4.00** Farm To Fork. **4.30** The Bold And The Beautiful. (PG) **5.00** 10 News First.

6.30 The Project. A look at the day's news and events. **7.30 The Challenge Australia.** Hosted by Brihony Dawson. **8.30 Ghosts.** (PGad) A TV documentary crew comes to Woodstone Mansion to shoot an episode of *Dumb Deaths*. **9.00 FBI: Most Wanted.** (Mdv) The team's search for diamond thieves reveals a dangerous connection to Kristin's undercover past in Miami. **11.00 The Project.** (R) A look at the day's news and events. **12.00 The Late Show With Stephen Colbert.** (PG) **1.00** Home Shopping. (R) **4.30** CBS Mornings.

10 BOLD (51) **6am** Home Shopping. **8.00** Soccer. Sydney Super Cup. Game 3. Everton FC v Western Sydney Wanderers. Replay. **10.30** Roads Less Travelled. **11.00** MacGyver. **Noon** NCIS: Los Angeles. **1.00** NCIS: New Orleans. **2.00** Bull. **3.00** Bondi Rescue. **3.30** The Love Boat. **4.30** Star Trek: The Next Generation. **5.30** MacGyver. **7.30** NCIS. **10.20** The Code. **11.15** MacGyver. **12.15am** Shopping. **2.15** Late Programs.

10 PEACH (52) **6am** Friends. **8.30** The Middle. **11.00** Friends. **Noon** Broke. **2.00** Friends. **3.00** The King Of Queens. **4.00** Becker. **5.00** Frasier. **6.00** Friends. **8.00** The Big Bang Theory. **9.30** Seinfeld. **11.00** Frasier. **Midnight** Home Shopping. **1.30** The Late Show With Stephen Colbert. **2.30** The Late Late Show With James Corden. **3.30** The King Of Queens. **4.30** Home Shopping.

ABC TV (2)

6.00 News Breakfast. **9.00** ABC News Mornings. **10.00** Kurt Fearnley's One Plus One. (R) **10.30** Dream Gardens. (PG, R) **11.05** Restoration Australia. (R) **12.00** ABC News At Noon. **1.00** Shetland. (Mal, R) **2.00** Parliament Question Time. **3.00** Gardening Australia. (R) **4.10** Long Lost Family. (PG, R) **5.00** Back Roads. (PG, R) **5.30** Hard Quiz. (PG, R)

6.00 The Drum. **7.00** ABC News. **7.30 7.30.** Presented by Sarah Ferguson. **8.00** **Stuff The British Stole: The Crow Flies.** (PG) A look at Crowfoot, the Chief of Blackfoot nation. **8.30** **Love On The Spectrum.** (R) Part 2 of 4. It is Valentine's Day and Maddi steps out on her first-ever date. **9.30** **Fake Or Fortune? Cosway Or Lawrence.** (R) Part 2 of 4. **10.30** **Space 22.** (PGa, R) **11.00** **ABC Late News.** **11.15** The Business. (R) **11.35** **MOVIE: The Australian Dream.** (2019, MA15+I, R) **12.35** **Media Watch.** (PG, R) **12.50** Baby Surgeons. (Ma, R) **1.40** Parliament Question Time. **2.40** Rage. (MA15+adhlnsv) **4.25** The Drum. (R) **5.25** 7.30. (R)

ABC TV PLUS (22) **6am** Children's Programs. **7.10pm** Shaun The Sheep. **7.20** Bluey. **7.30** Spicks And Specks. **8.00** Would I Lie To You? **8.30** To Be Advised. **9.15** Blunt Talk. (Final) **9.40** Friday Night Dinner. **10.05** Fisk. **10.35** Everything's Gonna Be Okay. **11.20** Staged. **12.05am** This Time With Alan Partridge. **12.35** Black Comedy. **1.05** Whose Line Is It Anyway? **1.50** Late Programs.

NITV (34) **6am** Morning Programs. **2pm** Shortland St. **2.30** The Cook Up. **3.00** Jarjums. **3.25** The Magic Canoe. **3.50** Wolf Joe. **4.00** Raven's Quest. **4.10** Grace Beside Me. **4.35** Spartakus And The Sun Beneath The Sea. **5.00** Our Stories. **5.30** Indian Country Today News. **6.00** Bamay. **6.30** News. **6.40** Arctic Secrets. **7.30** Faboriginal. **8.30** The Casketeers. **9.00** Hunting Aotearoa. **9.25** Atlanta. **10.35** Late Programs.

SBS (3)

6.00 Soccer. 2022 FIFA World Cup. Group H. Portugal v Uruguay. Continued. **8.00** DD India Prime Time News. **8.30** Soccer. 2022 FIFA World Cup. Group G. Cameroon v Serbia. Replay. **11.30** Soccer. 2022 FIFA World Cup. Group G. Brazil v Switzerland. Replay. **2.30** Soccer. 2022 FIFA World Cup. Group H. Portugal v Uruguay. Replay. **5.30** FIFA World Cup 2022 Daily World Cup Show.

6.00 **FIFA World Cup 2022 Preview Show.** **6.30** **SBS World News.** **7.30** **Who Do You Think You Are? Jeff Fatt.** (PG, R) Jeff Fatt explores his roots. **8.30** **How To Sleep Well With Michael Mosley.** (R) Michael Mosley reveals how sleep affects almost every part of a person's physical and mental wellbeing. **9.40** **Ukraine: Life Under Attack.** Takes a look at the people of Ukraine. **10.35** **The Artist's View: Sting.** (Ml, R) **11.05** **FIFA World Cup Classic Matches.** (R) **1.00** **Soccer.** 2022 FIFA World Cup. Group A. Netherlands v Qatar. **4.00** FIFA World Cup Classic Matches. (R) **5.00** **Soccer.** 2022 FIFA World Cup. Group B. Wales v England. From Ahmad bin Ali Stadium, Al Rayyan, Qatar.

SBS VICELAND (31) **6am** WorldWatch. **9.30** Shortland St. **11.00** The Movie Show. **Noon** The Ghan: The Full Journey. **3.15** Bamay. **3.40** WorldWatch. **5.05** Shortland St. **5.35** Joy Of Painting. **6.05** Jeopardy! **6.30** FIFA World Cup 2022 Daily World Cup Show. **7.00** FIFA World Cup 2022 Preview Show. **7.35** 8 Out Of 10 Cats. **8.30** Travel Man. **9.30** Forbidden History. **10.25** Valley Of The Boom. **11.20** Late Programs.

SBS WORLD MOVIES (32) **6am** Ex Files 3. Continued. (2017, PG, Mandarin) **8.00** Broken Hill. (2009, PG) **10.00** Dreamfools. (2018, M, Italian) **11.55** Breathe. (2017, M) **2.05pm** Brideshead Revisited. (2008, PG) **4.30** Sometimes Always Never. (2018, PG) **6.10** This Beautiful Fantastic. (2016, PG) **7.50** Madame. (2017, M) **9.30** Reckless. (2018, MA15+, Italian) **11.25** Late Programs. **5.45am** The Movie Show.

SEVEN (6)

6.00 Sunrise. **9.00** The Morning Show. (PG) **11.30** **Seven Morning News.** **12.00** **MOVIE: Falling Down.** (1993, Mvl, R) **2.30** **Border Security: International.** (PG, R) **3.00** The Chase. **4.00** **Seven News At 4.** **5.00** **To Be Advised.**

6.00 **Seven News.** **7.00** **Border Security: Australia's Front Line.** (PG, R) Biosecurity stop a woman entering the country. **7.30** **Dogs Behaving (Very) Badly.** (PG) Presented by Graeme Hall. **8.30** **The Good Doctor.** (M) After a woman pregnant with sextuplets arrives at the hospital, Dr Andrews splits the doctors into teams. **9.30** **S.W.A.T.** (Mav) As the team works to stop a violent attack on the city, they're forced to confront the group responsible for Erika's death. **10.30** **The Latest: Seven News.** **11.00** **Chicago Fire.** (Ma) **12.00** **The Resident.** (Mav, R) **2.00** **Home Shopping.** (R) **4.00** **NBC Today.** **5.00** **Seven Early News.** **5.30** Sunrise.

7MATE (60) **6am** Morning Programs. **11.00** American Restoration. **11.30** Pawn Stars. **Noon** American Pickers. **1.00** Hellfire Heroes. **2.00** Scrap Kings. **3.00** Billy The Exterminator. **3.30** Hustle & Tow. **4.30** Aussie Lobster Men. **5.30** American Restoration. **6.00** American Pickers. **7.00** Pawn Stars. **7.30** Motorway Patrol. **8.00** Beach Cops. **8.30** Aussie Salvage Squad. **9.30** Outback Truckers. **11.30** Late Programs.

7TWO (62) **6am** Morning Programs. **8.30** Million Dollar Minute. **9.30** NBC Today. **Noon** Emmerdale. **12.30** Coronation Street. **1.00** Sons And Daughters. **3.00** Creek To Coast. **3.30** Million Dollar Minute. **4.30** Medical Emergency. **5.00** Animal Rescue. **5.30** Escape To The Country. **6.30** Bargain Hunt. **7.30** Call The Midwife. **8.30** Judge John Deed. **10.30** Air Crash Investigations: The Accident Files. **11.30** Late Programs.

NINE (8)

6.00 Today. **9.00** Today Extra. (PG) **11.30** **Morning News.** **12.00** **My Mum Your Dad.** (R) **1.30** Getaway. (PG, R) **2.00** Pointless. (PG) **3.00** **Tipping Point.** (PG, R) **4.00** **Millionaire Hot Seat.** (R) **5.00** **Afternoon News.**

6.00 **Nine News.** **7.00** **A Current Affair.** **7.30** **Travel Guides.** (PG, R) Ordinary Australians visit Israel. **8.30** **MOVIE: Central Intelligence.** (2016, Mlsv, R) An accountant and a CIA agent reconnect at a reunion and proceed to work together on a top-secret case. Dwayne Johnson, Kevin Hart, Danielle Nicolet. **10.40** **Nine News Late.** A look at the latest news and events. **11.10** **Skin A&E.** (Mm) **12.00** **Bluff City Law.** (Ma, R) **12.50** **Reel Destinations: Lodge Life.** (R) **1.20** **Talking Honey.** (PGs, R) **1.30** **TV Shop: Home Shopping.** (R) **4.00** **Believer's Voice Of Victory.** (PGa) **4.30** **A Current Affair.** (R) **5.00** **News Early Edition.** **5.30** Today.

9GEM (81) **6am** TV Shop. **7.00** Creflo. **7.30** TV Shop. **9.30** Newstyle Direct. **10.00** Danoz. **10.30** Pointless. **11.30** The Miracle Tiger. **Noon** Days Of Our Lives. **12.55** The Young And The Restless. **1.50** Death In Paradise. **3.00** Antiques Roadshow. **3.30** **MOVIE: Our Man In Marrakesh.** (1966) **5.30** Murder, She Wrote. **6.30** Antiques Roadshow. **7.30** New Tricks. **8.40** The Closer. **9.40** Rizzoli & Isles. **10.40** Late Programs.

9GO! (82) **6am** Children's Programs. **Noon** The Carrie Diaries. **1.00** Queer Eye For The Straight Guy. **2.00** Full House. **3.00** The Nanny. **3.30** 3rd Rock. **4.00** That '70s Show. **4.30** Raymond. **5.30** The Nanny. **6.00** 3rd Rock. **6.30** That '70s Show. **7.00** Young Sheldon. **7.30** Botched. **8.30** Love Island Australia. **9.30** **MOVIE: She's Out Of My League.** (2010, MA15+) **11.35** Young Sheldon. **Midnight** Satisfaction. **1.00** Late Programs.

TEN (5)

6.00 The Talk. (PGa) **7.00** Judge Judy. (PG, R) **7.30** The Bold And The Beautiful. (PG, R) **8.00** 10 News First: Breakfast. **8.30** Studio 10. (PG) **12.00** Dr Phil. (Ma) **1.00** To Be Advised. **2.00** Entertainment Tonight. **2.30** Good Chef Bad Chef. (R) **3.00** Judge Judy. (PG, R) **3.30** My Market Kitchen. (R) **4.00** Farm To Fork. **4.30** The Bold And The Beautiful. (PG) **5.00** 10 News First.

6.30 **The Project.** The hosts and guest panellists take a look at the day's news, events and hot topics. **7.30** **The Challenge Australia.** Relationships in the house continue to break down under the intense stress of the game. **8.30** **NCIS.** (Ma) The team investigates the US Secretary of the Navy when her husband claims she tried to murder him. **10.30** **NCIS: Hawai'i.** (Mdv, R) The NCIS team investigates after a US Marine corporal dies in a tide pool after being exposed to fantanyl. **11.30** **The Project.** (R) A look at the day's news and events. **12.30** **The Late Show With Stephen Colbert.** (PG) Late-night talk show. **1.30** **Home Shopping.** (R) **4.30** **CBS Mornings.** Morning news and talk show.

10 BOLD (51) **6am** Home Shopping. **8.00** Pooches At Play. **8.30** Roads Less Travelled. **9.00** iFish. **9.30** Reel Action. **10.00** MacGyver. **Noon** NCIS: Los Angeles. **1.00** NCIS. **2.00** Bull. **3.00** Bondi Rescue. **3.30** The Love Boat. **4.30** Star Trek: The Next Generation. **5.30** MacGyver. **7.30** NCIS. **8.30** Bull. **10.20** 48 Hours. **12.15am** Home Shopping. **2.15** The Code. **3.10** Star Trek: The Next Generation. **4.05** MacGyver.

10 PEACH (52) **6am** The Late Show With Stephen Colbert. **7.00** Seinfeld. **8.30** Basketball. NBL. Round 8. New Zealand Breakers v Brisbane Bullets. Replay. **10.30** Becker. **11.30** Frasier. **12.30pm** The King Of Queens. **1.30** Seinfeld. **3.00** The King Of Queens. **4.00** Becker. **5.00** Frasier. **6.00** Friends. **8.00** The Big Bang Theory. **9.30** Mom. **11.10** Frasier. **Midnight** Shopping. **1.30** Stephen Colbert. **2.30** Late Programs.



Peter Rabbit





Order now on
aussietoysonline.com.au



12578676-NC47-22

ABC TV (2)

6.00 News Breakfast. **9.00** ABC News Mornings. **10.00** The Great Acceleration. (R) **11.00** Australia Remastered. (PG, R) **12.00** ABC News At Noon. **12.30** National Press Club Address. **1.40** Media Watch. (PG, R) **2.00** Parliament Question Time. **3.00** Gardening Australia. (R) **4.15** Long Lost Family. (PG, R) **5.00** Back Roads. (PG, R) **5.30** Hard Quiz. (PG, R)

6.00 The Drum. **7.00** ABC News. **7.30 7.30.** **8.00** **Hard Quiz.** (PG, R) Presented by Tom Gleeson. **8.30** **Question Everything.** (Final) Presented by Wil Anderson and Jan Fran. **9.00** **Fisk.** (Final, PG) Petro drops by to give Helen some news. **9.30** **Would I Lie To You?** (PG, R) Hosted by Rob Brydon. **10.00** **To Be Advised.** **10.45** **ABC Late News.** **11.00** The Business. (R) **11.15** Death In Paradise. (PG, R) **12.15** Marcella. (Malv, R) **1.00** Parliament Question Time. **2.00** Midsomer Murders. (Mv, R) **3.30** Rage. (MA15+adhlnsv) **4.25** The Drum. (R) **5.25** 7.30. (R)

ABC TV PLUS (22) **6am** Children's Programs. **7.10pm** Shaun The Sheep. **7.20** Bluey. **7.30** Anh's Brush With Fame. **8.00** Brian Johnson's A Life On The Road. **8.50** **MOVIE: Courtney Barnett: Anonymous Club.** (2021, M) **10.15** **Stuff The British Stole.** **10.45** Our Brain. **11.40** Staged. **12.05am** Starstruck. **12.50** Louis Theroux's LA Stories. **1.50** Catalyst. **2.45** ABC News Update. **2.50** Close. **5.00** Hoot Hoot Go! **5.10** Late Programs.

NITV (34) **6am** Morning Programs. **2pm** Shortland St. **2.30** The Cook Up. **3.00** Jarjums. **3.25** The Magic Canoe. **3.50** Wolf Joe. **4.00** Raven's Quest. **4.10** Grace Beside Me. **4.35** Spartakus And The Sun Beneath The Sea. **5.00** Our Stories. **5.30** Te Ao With Moana. **6.00** Bamay. **6.50** News. **7.00** Arctic Secrets. **7.50** Peckham's Finest. **8.30** I, Sniper. **9.30** Soccer. 2022 FIFA World Cup. Group D. Tunisia v Australia. Replay. **1am** Late Programs.

SBS (3)

6.00 Soccer. 2022 FIFA World Cup. Group B. Wales v England. Continued. **8.00** DD India Prime Time News. **8.30** Soccer. 2022 FIFA World Cup. Group A. Netherlands v Qatar. Replay. **11.30** Soccer. 2022 FIFA World Cup. Group H. Korea Republic v Ghana. Replay. **2.30** Soccer. 2022 FIFA World Cup. Group B. Wales v England. Replay. **5.30** FIFA World Cup 2022 Daily World Cup Show.

6.00 **FIFA World Cup 2022 Preview Show.** **6.30** **SBS World News.** **7.30** **The Toys That Built The World: Masters Of Invention.** (PG) Part 1 of 4. **8.30** **Riveted: The History Of Jeans.** Takes a look at the story of the iconic American garment, denim jeans. **9.30** **Boeing's Fatal Flaw.** (PGa, R) An investigation into Boeing's 737 MAX. **10.30** **The Artist's View.** (PG, R) **11.00** **FIFA World Cup Classic Matches.** (R) **12.30** **Soccer.** 2022 FIFA World Cup. Group D. Australia v Denmark. From Al Janoub Stadium, Al Wakrah, Qatar. **4.00** FIFA World Cup Classic Matches. (R) **5.00** **Soccer.** 2022 FIFA World Cup. Group C. Poland v Argentina.

SBS VICELAND (31) **6am** Soccer. Iran v USA. Continued. **8.00** WorldWatch. **8.30** Soccer. Ecuador v Senegal. Replay. **11.30** Soccer. Iran v USA. Replay. **2.30pm** Front Up 1998. **3.40** WorldWatch. **5.05** Shortland St. **5.35** Joy Of Painting. **6.05** Jeopardy! **6.30** FIFA World Cup 2022 Daily World Cup Show. **7.00** FIFA World Cup 2022 Preview Show. **7.30** News. **7.35** 8 Out Of 10 Cats. **8.30** Land Of The Giants: Titans Of Tech. **10.10** Late Programs.

SBS WORLD MOVIES (32) **6am** The Movie Show. **6.20** The Lunchbox. (2013, PG, Hindi) **8.20** This Beautiful Fantastic. (2016, PG) **10.00** Into The White. (2012, M, Norwegian) **Noon** Higher Ground. (2011, M) **2.05** Broken Hill. (2009, PG) **4.05** A Street Cat Named Bob. (2016, PG) **6.00** Fellinopolis. (2020, Italian) **7.30** A Little Chaos. (2014, M) **9.40** Human Capital. (2013, MA15+, Italian) **11.45** Late Programs.

SEVEN (6)

6.00 Sunrise. **9.00** The Morning Show. (PG) **11.30** News. **12.00** Test Cricket: Pre-Game Show. **12.50** Cricket. First Test. Australia v West Indies. Day 1. Morning session. **2.50** Test Cricket: The Lunch Break. **3.30** Cricket. First Test. Australia v West Indies. Day 1. Afternoon session. **5.30** Test Cricket: Tea Break. **5.50** Cricket. First Test. Australia v West Indies. Day 1. Evening session.

6.00 **Seven News.** **7.00** **Cricket.** First Test. Australia v West Indies. Day 1. Evening session. **8.30** **MOVIE: S.W.A.T.** (2003, Mlv, R) An elite team of Los Angeles police officers is assigned to transport a drug kingpin into federal custody. Samuel L. Jackson, Colin Farrell, Michelle Rodriguez. **10.55** **Border Security: Australia's Front Line.** (PG, R) A biosecurity dog makes a fishy discovery. **11.25** **The Amazing Race.** (PGI) Hosted by Phil Keoghan. **12.25** **MOVIE: Borderline Normal.** (2001, PGas, R) Caterina Scorsone. **2.30** **Home Shopping.** (R) **4.00** **NBC Today.** **5.00** **Seven Early News.** **5.30** Sunrise.

7MATE (60) **6am** Morning Programs. **11.00** American Restoration. **11.30** Pawn Stars. **Noon** Aussie Salvage Squad. **1.00** Outback Truckers. **3.00** Billy The Exterminator. **3.30** Hustle & Tow. **4.30** Aussie Lobster Men. **5.30** American Restoration. **6.00** Cricket. First Test. Australia v West Indies. Day 1. Evening session. **7.00** Pawn Stars. **7.30** Family Guy. **8.00** American Dad! **9.00** **MOVIE: Pompeii.** (2014, M) **11.10** Late Programs.

7TWO (62) **6am** Shopping. **6.30** Escape To The Country. **7.30** Harry's Practice. **8.00** Cruise Away. **8.30** Million Dollar Minute. **9.30** NBC Today. **Noon** Emmerdale. **12.30** Coronation Street. **1.00** Sons And Daughters. **3.00** My Greek Odyssey. **4.00** Million Dollar Minute. **4.30** Medical Emergency. **5.00** Animal Rescue. **5.30** Escape To The Country. **6.30** Bargain Hunt. **7.30** Heartbeat. **8.45** Lewis. **10.45** Late Programs.

NINE (8)

6.00 Today. **9.00** Today Extra. (PG) **11.30** **Morning News.** **12.00** **MOVIE: Calling For Love.** (2020, PGa) **1.50** **Garden Gurus Moments.** (R) **2.00** Pointless. (PG) **3.00** **Tipping Point.** (PG, R) **4.00** **Millionaire Hot Seat.** (R) **5.00** **Afternoon News.**

6.00 **Nine News.** **7.00** **A Current Affair.** **7.30** **Country Home Rescue With Shaynna Blaze.** (PGI) Shaynna Blaze restores a dilapidated home. **8.30** **Dream Listings Byron Bay.** Amanda Gould hopes an Asian inspired property will tick all her clients' boxes. **9.30** **Escape To The Chateau.** (R) Work starts on re-slating the roof. **10.30** **Nine News Late.** **11.00** **Family Law.** (Ma) **11.50** **Bluff City Law.** (Mad, R) **12.40** **Tipping Point.** (PG, R) **1.30** **TV Shop: Home Shopping.** (R) **2.30** **Global Shop.** (R) **3.00** **TV Shop: Home Shopping.** (R) **4.00** **Believer's Voice Of Victory.** (PGa) **4.30** **A Current Affair.** (R) **5.00** **News Early Edition.** **5.30** Today.

9GEM (81) **6am** TV Shop. **7.00** Creflo Dollar Ministries. **7.30** TV Shop: Home Shopping. **10.30** Pointless. **11.30** My Favorite Martian. **Noon** Days Of Our Lives. **12.55** The Young And The Restless. **1.50** New Tricks. **3.00** Antiques Roadshow. **3.30** **MOVIE: Crooks In Cloisters.** (1964) **5.30** Murder, She Wrote. **6.30** Antiques Roadshow. **7.30** As Time Goes By. **8.50** Midsomer Murders. **10.50** Chicago P.D. **11.50** Late Programs.

9GO! (82) **6am** Children's Programs. **Noon** The Carrie Diaries. **1.00** Queer Eye For The Straight Guy. **2.00** Full House. **3.00** The Nanny. **3.30** 3rd Rock. **4.00** That '70s Show. **4.30** Raymond. **5.30** The Nanny. **6.00** 3rd Rock. **6.30** That '70s Show. **7.00** Young Sheldon. **8.30** Love Island Australia. **9.30** **MOVIE: Bad Neighbours.** (2014, MA15+) **11.30** Young Sheldon. **Midnight** Satisfaction. **1.00** Late Programs.

TEN (5)

6.00 The Talk. (PGa) **7.00** Judge Judy. (PG, R) **7.30** The Bold And The Beautiful. (PG, R) **8.00** 10 News First: Breakfast. **8.30** Studio 10. (PG) **12.00** Dr Phil. **1.00** The Challenge Australia. (R) **2.00** Entertainment Tonight. **2.30** Good Chef Bad Chef. (R) **3.00** Judge Judy. (PG, R) **3.30** My Market Kitchen. (R) **4.00** Farm To Fork. **4.30** The Bold And The Beautiful. (PG) **5.00** 10 News First.

6.30 **The Project.** A look at the day's news and events. **7.30** **The Dog House Australia.** (PGa, R) Follow the staff at the Animal Welfare League as it tries to find the right fit for a Tibetan spaniel mix. **9.30** **My Life Is Murder.** (Ma) Harry asks Alexa to investigate a case involving a young man he has been mentoring. **10.30** **Bull.** (Ma, R) The team experiences a conflict of interest. **11.30** **The Project.** (R) A look at the day's news and events. **12.30** **The Late Show With Stephen Colbert.** (PG) Late-night talk show. **1.30** **Home Shopping.** (R) **4.30** **CBS Mornings.**

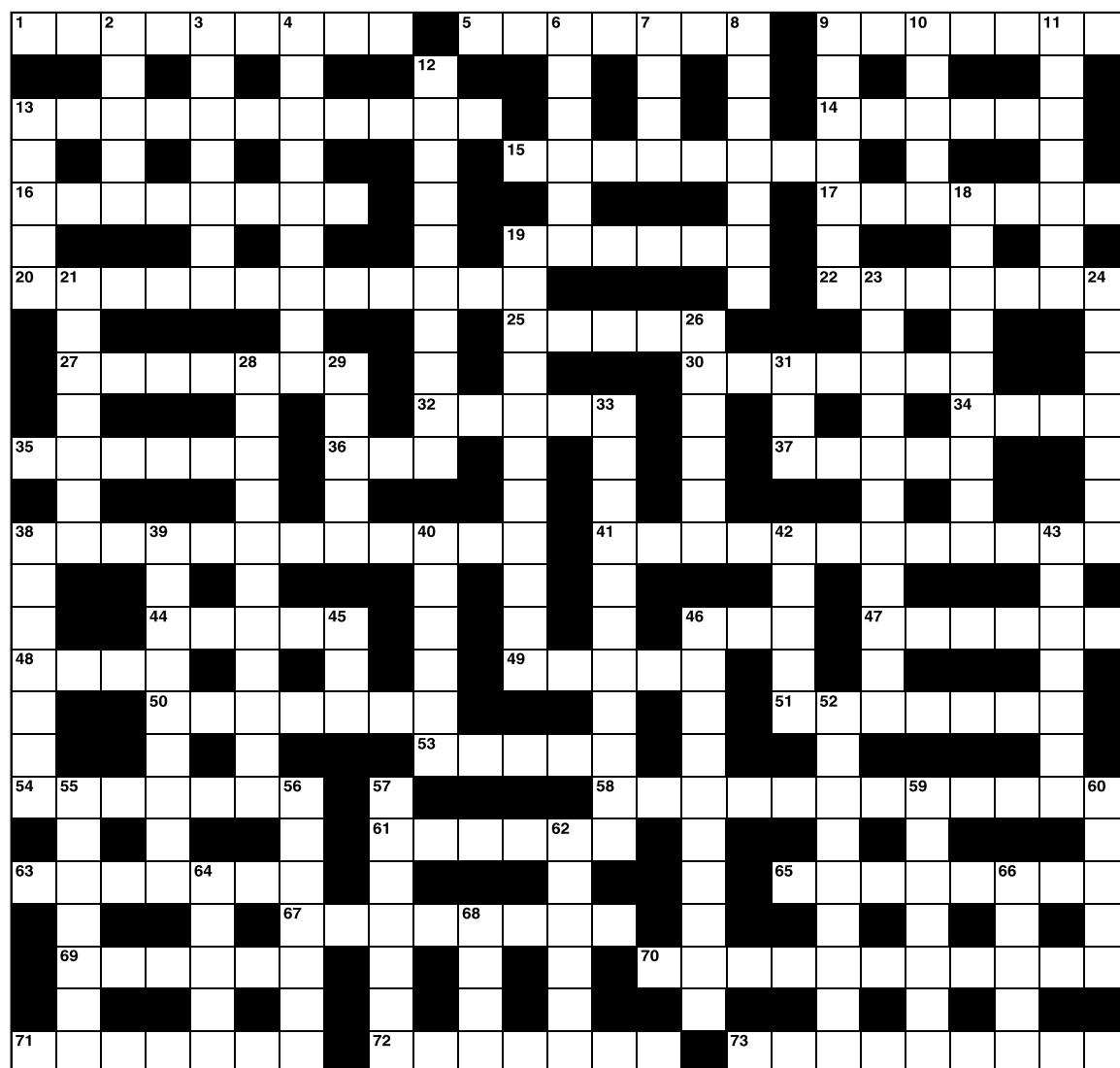
10 BOLD (51) **6am** Home Shopping. **8.00** Pooches At Play. **8.30** Roads Less Travelled. **9.00** iFish. **9.30** Reel Action. **10.00** MacGyver. **Noon** NCIS: Los Angeles. **1.00** NCIS. **2.00** Bull. **3.00** Bondi Rescue. **3.30** The Love Boat. **4.30** Star Trek: The Next Generation. **5.30** MacGyver. **7.30** NCIS. **8.30** Hawaii Five-0. **10.20** Tommy. **11.15** Evil. **12.15am** Home Shopping. **2.15** Hawaii Five-0. **3.10** Star Trek: The Next Generation. **4.05** MacGyver.

10 PEACH (52) **6am** The Late Show With Stephen Colbert. **7.00** Friends. **8.00** Becker. **9.00** The King Of Queens. **10.00** The Middle. **11.30** Frasier. **12.30pm** Friends. **1.00** Becker. **2.00** NBL Slam. **2.30** The Big Bang Theory. **3.00** The King Of Queens. **4.00** Becker. **5.00** Frasier. **6.00** Friends. **8.00** The Big Bang Theory. **9.20** Two And A Half Men. **10.10** The Big Bang Theory. **11.00** Late Programs.

No. 072

65 Of great size or intensity (8)
67 Our body's frame (8)
69 Fruit and colour (6)
70 Upkeep (11)
71 Enigma (7)
72 1890s art style, art – (7)
73 Assertion (9)

- 2** Indian stringed instrument (5)
- 3** Superintend (7)
- 4** Disconcert (9)
- 6** Part of the eye (6)
- 7** Legume (4)
- 8** Plague (7)
- 9** Heavenly bodies (7)
- 10** Official examination of accounts (5)
- 11** Not artificial (7)
- 12** Often (10)
- 13** Internet connection device (5)
- 18** Numb (9)
- 19** Exponential (11)
- 21** Raging fire (7)
- 23** Protein which carries oxygen in the blood (11)
- 24** Citation from a larger work (7)
- 26** Handwriting (6)
- 28** Chant (11)
- 29** Cliche (5)
- 31** Vietnam (abbrev) (3)
- 33** Insect before butterfly (11)
- 38** Outcry (7)
- 39** Having healing properties (9)
- 40** Indulgence in costly pleasures (6)

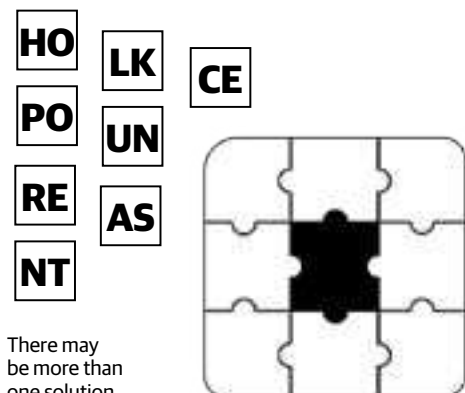


42 Conjuring (5)	59 Organise (7)
43 Negative (7)	60 Pigeonhole (5)
45 Tunneler (3)	62 Unfold (6)
46 Of minor importance (10)	64 Move to music (5)
52 Large music ensemble (9)	66 Hedge (5)
55 Careful usage in order to reduce waste (7)	68 Unbleached linen (4)
56 Concisely (7)	
57 Spear, as in athletic event (7)	

[illegible]

No. 072

Place each of the tiles of letters into the blank jigsaw below to create four six-letter words going across and down.

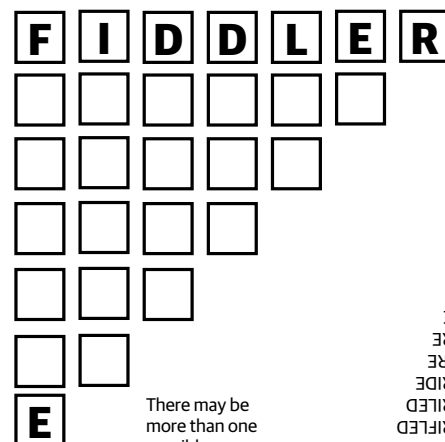


There may be more than one solution

ANSWERS: POLKAS, POUNCE, ASHORE, CENTRE

No. 068

Starting with the seven-letter word, drop a letter and form a six-letter word. Continue in this manner until you reach the single letter at the bottom. You can rearrange the letters in each step, if necessary.



There may be more than one possible answer.

ANSWERS:

26-11-22

A. Neighbours
B. *The Secret Life of Us*
C. *Packed to the Rafters*
D. *Home and Away*

A. The sky
B. Thunder and lightning
C. War
D. The sea

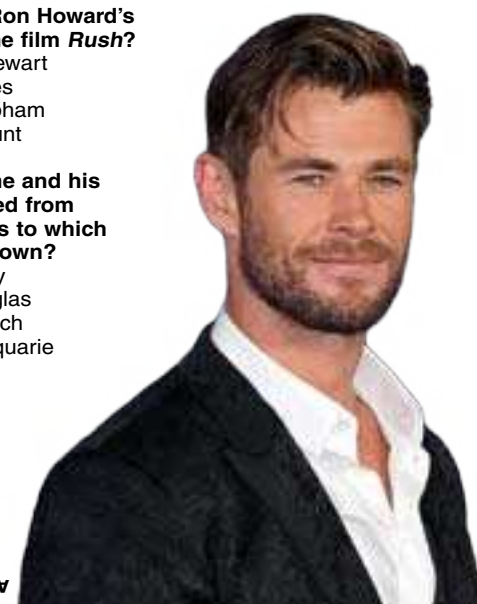
A. Helena Bonham Carter
B. Kristen Stewart
C. Keira Knightley
D. Kirsten Dunst

ANSWERS: 1D, 2B, 3B, 4D, 5A

Formula One in 1970 was dominated by British drivers. Which of the following was NOT a British driver?

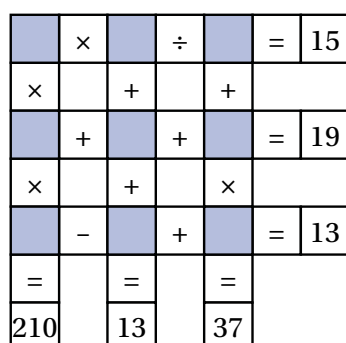
A. Jackie Stewart
B. Alan Jones
C. Jack Brabham
D. James Hunt

A. Byron Bay
B. Port Douglas
C. Airlie Beach
D. Port Macquarie



ANSWERS: 1D, 2B, 3B, 4D, 5A

No. 072



Insert each number from 1 to 9 in the shaded squares to solve all the horizontal and vertical equations.

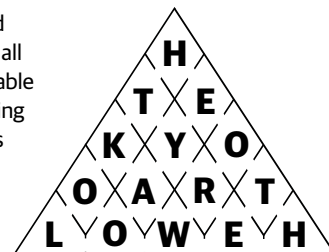
Multiplication and division are performed before addition and subtraction.

37	13	210
=	=	=
13 = 9 + 2 - 6		
	×	×
19 = 4 + 8 + 7		
	+	×
15 = 1 ÷ 3 × 5		

No. 068

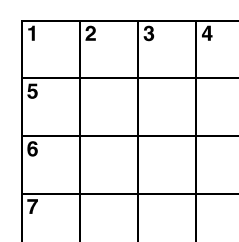
The starting letter could be in any segment, and all subsequent letters are able to be connected following a path through the gaps in the walls. You may only enter each of the segments once, and all letters must be used.

HINT: The answer is a phrase.



ANSWER: LOOK THE OTHER WAY

No. 068



ACROSS: 1. Snap, 5. Lava, 6. Oven, 7. Were.
DOWN: 1. Slow, 2. Nave, 3. Aver, 4. Pane.

ACROSS

1 Break sharply (4)
5 Molten rock (4)
6 Food heater (4)
7 Second person past tense of be (4)

- 1** Lacking speed (4)
- 2** Central part of a church (4)
- 3** Avouch (4)
- 4** Window glass (4)



Network Classifieds

sales@networkclassifieds.com.au
networkclassifieds.com.au

1300 666 808

Trades & Services

Deadline

Placing your classified advert is so easy...

Phone: 1300 666 808

Email: sales@networkclassifieds.com.au
(include your name, address and phone number)

We accept payment by:

VISA/MASTERCARD/EFTPOS/BANK TRANSFER
(1.5% credit card processing fee applies. Cheques and money orders can be posted.)



Deadline for all classifications is
3.30pm Tuesday.



Computers

Cartridge World
SPEND LESS TO PRINT!

**INK • TONER • PRINTERS
PAPER • PRINTER SERVICING**

31 Crouch Street South, Mount Gambier
Ph. 08 8723 6044
www.cartridgeworld.com.au

Solar Cleaning

Servicing the Limestone Coast
Commercial – Industrial – Residential
Call 0411 202 319
www.candpsolarpanelcleaning.com
www.facebook.com/candpsolarpanelcleaning

Tiling

BEAUMONT TILES

25 Bay Rd, Mount Gambier SA 5290
(08) 8723 9600
Monday – Friday: 7.30am – 5pm
Saturday: 9am – 12pm
#ichosebeaumonts

Find it in the Trades & Services

section of Network Classifieds.

Professional Services

Dentist

DENTURES DIRECT
Visiting Mt Gambier since 2003.
Govt. forms accepted.
Have your dentures made by
Dental Prosthetist/Technicians.
Call for appt. 1800 718 450

General Notices

Public Notices and Event

MILLICENT CANCER SUPPORT GROUP AGM

to be held at the Somerset Hotel Sovereign Bar at 5.30pm on Tuesday 29th November 2022. New members are most welcome. Enquiries to Lisa 0407 872 587

Buy, Rent & Sell in our
Real Estate
section of Network
Classifieds.
1300 666 808

General Notices

Public Notices and Event



LIMESTONE COAST SOUTHERN REGIONAL ASSESSMENT PANEL

CALL FOR EXPRESSIONS OF INTEREST - INDEPENDENT MEMBERS TWO VACANCIES

Together the District Council of Grant, the Wattle Range Council, the District Council of Robe and the City of Mount Gambier have agreed to form the Limestone Coast Southern Regional Assessment Panel commencing on 1 July 2022.

Expressions of interest are now being sought from members of the public who would like to be considered for appointment as an independent member of the Regional Assessment Panel (LCSRAP). The role of the LCSRAP is to make decisions on a wide range of development applications within the respective council areas.

The LCSRAP is to be comprised of five members who have an interest in urban and regional planning, with appropriate qualifications and experience relevant to the LCSRAP. As a guide, it is anticipated that independent members could come from the field of architecture, landscape architecture, civil engineering, planning, law, building, environmental planning or similar fields. It is a requirement that all members of the LCSRAP obtain accreditation from Plan SA as Planning Level 2 to be able to be a member of the panel.

Independent members will be compensated for their time and expertise by an appropriate level of remuneration. The term of the LCSRAP is for a two year period concluding on Monday 1 July 2024.

Expressions of interest detailing experience, skills, knowledge and qualifications and whether you wish to be considered for appointment as Presiding Member should be forwarded to:

City of Mount Gambier
PO Box 56, Mount Gambier SA 5290,
or email city@mountgambier.sa.gov.au by
5:00pm Friday 9 December 2022.

The code of conduct for panel members and the guidelines for accreditation is available and should be obtained before submitting an expression of interest.

For further information, please contact Tracy Tzioutziouklaris, City of Mount Gambier Manager Development Services by phone on (08) 8721 2555 or email city@mountgambier.sa.gov.au

12579075-AV47-22

Find your Local Specialist in our Professional Services section of Network Classifieds.

1300 666 808

Announcements

Deaths

LUCAS Joan
It is with our deepest sorrow that we inform friends of the passing of our beloved mother, Joan Lucas on 13/11/22, surrounded by family.

A massive Thanks to the Medical staff of the Millicent Hospital.

Celebration of mum's life at Civics and Arts Centre Millicent at 2PM, Friday 25th November. Followed by a short grave side service.

- The Lucas Family



TALBOT, Bertram Lyall

09/03/1942 – 04/11/2022

Passed away peacefully and surrounded by family at Millicent and District Hospital.

Aged 80 Years

Dearly loved and devoted husband of Marie (dec).

Loved father of Craig, Matthew, Christopher and father figure to Troy.

Adored pop to Darcy, Benjamin and Hugh.

'A well-earned rest for a life well lived'

Privately Cremated

Wattle Range Funerals
17 Short Street, Millicent
08 8733 2067
www.wattlerangefunerals.com.au

Acknowledgements

Thank You

Hogg family would like to send a big thank you to all of you in our amazing community for the support you have shown us, not only in our loss but throughout Gavin's long and courageous battle with illness. Your flowers, cards, tributes and visits have been much appreciated.

Special thanks to all the people involved in the Penola Sports Club committee, Marcia for her catering and those of you who made a special effort to ensure that we were able to give Gavin a fitting farewell.

Funeral Directors

WATTLE RANGE FUNERALS
The South East's most trusted funeral directors.
Caring for the South East since 1935.
Call us on: 08 8733 2067 - Millicent | 08 8762 0099 - Naracoorte
For funeral details please visit our website:
wattlerangefunerals.com.au

General Classifieds

Garage Sales

GIANT GARAGE SALE
25th, 26th, 27th November
LIVING WATER
END OF AN ERA SALE
13 DISMAL SWAMP ROAD
MINGBOOL

Massive entertainment unit, bookcase, laminated side boards, queen beds, single beds, wardrobes, drawers, bedside tables, fridge, washing machine, bric-a-brac, trampoline, swing sets and lots of other stuff will need to be taken from property on day of sale.

It's the end of an amazing era at Living Water. We are relocating to another area to continue to expand the work. When one door closes another opens. How Wonderful, kind and loving are you Jesus.

Network Classifieds
1300 666 808

Buy & Sell in the Motoring
section of Network Classifieds.

Employment

Positions Vacant

Truck Drivers Wanted

Family owned and operated business seeking reliable, professional, experienced B Double/Truck and Trailer drivers for ongoing interstate work.

Burdett's has been established for over 40 years and proudly run a fleet of modern trucks which are kept up to date with the latest technology and well maintained by manufacturer.

Drivers will be required to operate on interstate routes between Wandilo, Epping and Dandenong. Other regular interstate work is also available.

- Be the first to drive our newest trucks in the fleet
- Competitive rates of pay + overtime at time and a half and double time
- Weekend work available
- Immediate start
- Company uniform

Candidates must hold a valid Australian MC or HC vehicle licence and have the relevant rights to work in Australia.

If you would like to know more, please contact the Transport Manager on **0417 041 435** or email your resume to **transport@burdetts.com.au**

Truck Drivers Wanted

Family owned and operated business seeking reliable, professional, experienced drivers for ongoing local work.

Burdett's has been established for over 40 years and proudly run a fleet of modern trucks which are kept up to date with the latest technology and well maintained by manufacturer.

Drivers will be required to operate on regional routes in country Victoria between Hallston, Lysterfield, Leongatha and Korumburra.

- Be the first to drive our newest trucks in the fleet
- Competitive rates of pay + overtime at time and a half and double time
- Weekend work available
- Immediate start
- Company uniform

Candidates must hold a valid Australian heavy vehicle licence (minimum of HC) and have the relevant rights to work in Australia.

If you would like to know more, please contact the Transport Manager on **0417 041 435** or email your resume to **transport@burdetts.com.au**

Truck Drivers Wanted

Family owned and operated business seeking reliable, professional, experienced drivers for ongoing local work.

Burdett's has been established for over 40 years and proudly run a fleet of modern trucks which are kept up to date with the latest technology and well maintained by manufacturer.

Drivers will be required to operate between Bendigo, Langwarrin and Dandenong.

- Be the first to drive our newest trucks in the fleet
- Competitive rates of pay + overtime at time and a half and double time
- Weekend work available
- Immediate start
- Home two nights a week
- Company uniform

Candidates must hold a valid Australian heavy vehicle licence (minimum of HC) and have the relevant rights to work in Australia.

If you would like to know more, please contact the Transport Manager on **0417 041 435** or email your resume to **transport@burdetts.com.au**

*Advertise with us and
get better results*

CALL: 1300 666 808



Parker Dowley and Braxton Muirhead-Rowe.



Emily Lowndes.



Isobel Thompson.



Jordan Wakelin and Pacey Fox.

Cross border performances

Millicent Gymnastics Club competed across the border in the Natimuk and District Gymnastics Competition recently.

There were some good results from Millicent gymnasts across the board, with 12 members entered.

Pacey Fox and Jordan Wakelin competed in WAG (women's artistic gymnastics) Level 2 and both received two gold ribbons and two silver in the coloured banned scoring system.

Level 3 was contested by 35 gymnasts, with Millicent's Harper Zalme in top form to claim first place in the floor event.

She also finished top 10 in bars and beams with an eighth and seventh place, which helped earn a seventh place overall.

Georgina Hassell's best results came in vault and beam, where she finished seventh and equal seventh respectively.

Cedar Ferguson's best results were a sixth place in beam and an equal seventh in floor, while Polly Sapiatzer did well to secure an equal seventh in floor competing in Level 3 for the first time.

She finished level with Maddison Inverarity in that event, who also managed a ninth in beam.

Natisha Muirhead-Rowe narrowly missed out on a top-10 finish in beam, where she scored well enough for 11th place.

WAG Level 4 was contested by 33 gymnasts, which included Millicent's Emily Lowndes.

Her best individual result was an equal ninth in beam, while she managed a third-place overall in the beam mixed teams event.

Isobel Thompson competed in the WAG Level 5 against 15 rival gymnasts.

She finished first overall in the teams event, along with a fifth in the individual floor event and sixth in both vault and bars.

Her efforts also earned her a seventh-place overall finish in the individual events.

A field of five contested the MAG (men's artistic gymnastics) Level 2 event which included Millicent's Braxton Muirhead-Rowe.

He impressed with his overall score improving by six marks, leading to an upgrade as he met Level 2 standard.

Individually, his best result was a second place in floor, while he finished third in vault, rings and pommel for a third-place overall.

He also claimed first place in the team event.

The final division contested by a Millicent gymnast was the MAG Level 3, which had four competitors.

Among those was Parker Dowley, who continued to improve and show his leadership in the MAG squad.

He finished equal first in vault and also



Millicent Level 3 WAG gymnasts Natisha Muirhead-Rowe, Georgina Hassell, Polly Sapiatzer, Maddison Inverarity, Harper Zalme and Cedar Ferguson. Pictures: SUBMITTED

won the floor event, with a third-place overall individually and first overall in the teams.

The Millicent Gymnastics Club will now look forward to hosting an inter-house competition on December 5, which will be contested from 4-7.30pm.

The event will be free entry with the community invited to attend.

Raffle tickets will also be available for a supper raffle, donated by local businesses.

Donations will be accepted until December 2.

RESULTS

WAG Level 3

- Harper Zalme: 14th Vault 8.700, 8th Bars 8.750, 7th Beam 8.250, 1st Floor 9.000, 7th Overall 33.800.
- Georgina Hassell: 7th Vault 8.250, 9th Bars 8.625, =7th Beam 8.250, 10th Floor 8.500,

11th Overall 33.625.

- Cedar Ferguson: 15th Vault 7.700, 26th Bars 7.900, 6th Beam 8.300, =7th Floor 8.650, 18th Overall 32.550.
 - Polly Sapiatzer: 17th Vault 7.500, 14th Bars 8.500, 14th Beam 7.800, =7th Floor 8.650, 19th Overall 32.450 - upgraded (met level 3 standard for first time).
 - Maddison Inverarity: 21st Vault 7.250, 24th Bars 8.025, 9th Beam 8.100, =7th Floor 8.650, 25th Overall 32.025.
 - Natisha Muirhead-Rowe: 24th Vault 7.100, 27th Bars 7.875, 11th Beam 8.000, 21st Floor 7.850, 29th Overall 30.825.
 - Team results: 6th Vault, 4th Bars, 2nd Beam, 2nd Floor, 5th overall.
- WAG Level 4
- Emily Lowndes: 18th Vault 7.900, 14th Bars 8.450, =9th Beam 8.750, 15th Floor 8.250, 18th Overall 33.350.

- Mixed Team results: 6th Vault, 6th Bars, 3rd Beam, 6th Floor, 6th Overall.

WAG Level 5

- Isobel Thompson: Individual results - 6th Vault 8.400, 6th Bars 8.825, 12th Beam 6.8, 5th Floor 8.8, 7th Overall 32.825; Team results - 1st team overall.

MAG Level 2

- Braxton Muirhead-Rowe: Individual results - 3rd Vault 8.350, 5th High Bar 6.800, 5th Parallel Bars 7.100, 2nd Floor 7.450, 3rd Rings 7.500, 3rd Pommel 6.500, 3rd Overall 43.700; Team results - 1st Team Overall.

MAG Level 3

- Parker Dowley: Individual results - =1st Vault 8.300, 3rd High Bar 7.300, 3rd Parallel Bars 8.700, 1st Floor 8.900, 3rd Rings 7.700, 3rd Pommel 4.000, 3rd Overall 44.900; Team results - 1st Team Overall.

Lower South East results

Midweek Round 6 Results

- Division 1: Port MacDonnell Red 41/6 d Naracoorte RSL 39/2; Naracoorte 40/6 d Mount Gambier Blue 39/2; Mount Gambier Red 59/8 d Port MacDonnell Blue 37/0; Mount Gambier RSL Red 75/8 d Millicent Blue 32/0; Mount Gambier RSL White 46/6 d Mount Gambier RSL Blue 42/2.
- Ladder: Mount Gambier RSL Red 35 points 140 per cent; Mount Gambier Red 31 132.2; Mount Gambier Blue 29 130.26; Naracoorte 28 96.7; Mount Gambier RSL Blue 25 132.67; Port MacDonnell Red 23 94.04; Mount Gambier RSL White 20 86.05; Millicent Blue 18 89.53; Millicent Red 17 89.22; Naracoorte RSL 12 89.79; Port MacDonnell Blue 2 63.1.

Friday Pennant Round 7 Results

- Division 1: Mount Gambier RSL Red 49/8 d Kingston 38/0; Penola Red 51/7 d Millicent Red 39/1; Penola Blue 52/6 d Millicent Blue 47/2; Port MacDonnell 55/6 d Mount Gambier RSL Blue.
- Ladder: Mount Gambier RSL Red 48 points 135.88 per cent; Port MacDonnell 42 114.95; Penola Red 39 140.22; Millicent Red 29 110.36; Mount Gambier RSL Blue 21 88.53; Millicent Blue 20 88.34; Kingston 15 79.04; Penola Blue 10 66.32.
- Division 2: Naracoorte 62/8 d Port MacDonnell 36/0; Beachport Red 45/4 d/w Beachport Blue 45/4; Mount Gambier 59/8 d Lucindale 33/0; Naracoorte RSL 55/6 d Robe 38/2.
- Ladder: Naracoorte 45 133.33; Mount Gambier 42 134.75; Robe 34 103.49; Beachport Red 27 96.71; Naracoorte RSL 23 104.08; Port MacDonnell 22 91.12; Beachport Blue 20 86.59; Lucindale 11 66.58.
- Division 3: Mount Gambier RSL 65/8 d Robe 41/0; Naracoorte 41/6 d Millicent 39/2.
- Ladder: Mount Gambier RSL 39 123.46; Naracoorte 27 91.49; Robe 26 87.25; Millicent 20 102.11.

Saturday Open Pennants, Round 7 Results

- Division 1: Robe 79/10 d Mount Gmbier Red 56/2; Mount Gambier RSL Red 71/11 d Port MacDonnell 50/1; Mount Gambier RSL Blue 80/10 d Penola 66/2; Naracoorte 61/12 d Mount Gambier Blue 47/0; Millicent 77/10 d Kingston 57/2.
- Ladder: Mount Gambier RSL Red 77 points 144.1 per cent; Mount Gambier Red 46 110.85; Naracoorte 45 94.13; Millicent 42 105.41; Mount Gambier RSL Blue 42 97.83; Mount Gambier Blue 37 96.66; Port MacDonnell 37 92.96; Robe 35 108.44; Penola 35 79.47; Kingston 24 81.99.
- Division 2: Mount Gambier 81/10 d Robe 57/2; Naracoorte RSL 74/12 d Naracoorte 64/0; Millicent Red 83/10 d Mount Gambier RSL 65/2; Beachport 76/12 d Lucindale 60/0; Millicent Blue 70/2 d Kalangadoo 80/10.
- Ladder: Naracoorte RSL 67 127.59; Mount Gambier 58 113.91; Millicent Red 56 113.71; Mount Gambier RSL 54 107.43; Naracoorte 46 106.76; Beachport 41 95.03; Robe 40 106.98; Kalangadoo 37 90.08; Millicent Blue 19 87.38; Lucindale 2 65.42.
- Division 3: Port MacDonnell Blue 60/12



Ian Hetherington sends one down for Penola in Saturday's Open Pennant.

Pictures: LACHLAN ONIONS



Roger Gibbs prepares to send a bowl down for Penola.



Peter Thompson skippered Penola in his rink.



John Davidson searches for the right line.

d Mount Gambier Blue 45/0; Penola 66/8 d Mount Gambier RSL Red 55/4; Mount Gambier RSL Blue 79/10 d Millicent Blue 74/2; Beachport 70/8 d Mount Gambier Red 67/4; Millicent Red 75/10 d Port MacDonnell Red 49/2.

- Ladder: Mount Gambier RSL Red 72 165.27; Mount Gambier RSL Blue 61 106.93; Port MacDonnell Red 59 132.4; Millicent Red 54 129.21; Penola 48 96.89; Beachport 3 96.69; Mount Gambier Red 34 112.61; Millicent Blue 34 93.33; Port MacDonnell Blue 15 57.1; Mount Gambier Blue 6 58.04.

Smaller field competes as Covid does the rounds again

Last Thursday's 2-4-2 event at the Millicent Bowls Club was met by a smaller field of 16 players, as some erred on the side of caution following Covid cases within the club.

The winning team for the week was Terry Barnes and Jim Campbell, with their score of 34+18 earning them the \$16 each cash prize.

Runners-up with a score of 33+5 were Lorraine Hyland and John Scudds, who took home the \$5 bar vouchers.

Other winning teams were John Eldridge and Iain Campbell (32+9) and Malcolm Wright and Eddie Hann (30+10).

Prior to the announcement of the winners, Glen Tilley reminded members to RSVP for the Christmas dinner on December 17 if they wish to attend.



Millicent Bowling Club 2-4-2 runners-up Lorraine Hyland and John Scudds. Pictures: SUBMITTED



Jim Campbell and Terry Barnes (absent) won the Millicent Bowling Club 2-4-2 event last Thursday.



Penola's Rex Williams, Royal Oak and POW Hotels sponsor Tony Gleeson, Brands Laira/Casella Wines sponsor Naomi Barnes with Ken Batt and Norman Vaughan after Penola claimed third place in the Men's Invitation Fours.



Mixed Triples winners Lyn Brodie, Bruce Brodie and Rex Williams. Pictures: SUBMITTED

Busy week on the greens

Last Thursday saw the Men's Invitation Fours' contested in good conditions for bowling and the Lucindale Bowls Club claimed victory ahead of Port MacDonnell and Penola.

The Penola Bowls Club tasted success in the Women's Friday Pennant competition as both sides cam away with victory.

Penola Red defeated Millicent Red 51-39, while Penola Blue defeated Millicent Blue 52-47 for its first win of the season.

However, it was a difficult day on the greens for Penola's Division 1 Open Pennant team, who suffered a 14-shot loss to Mount Gambier RSL Blue on Saturday.

Elsewhere, Penola's Division 3 sides had more successful ventures as South defeated Mount Gambier RSL Red by 11 shots and North claimed a 19-shot win over Kalangadoo.

On Sunday, the Majella Mixed Triples were contested in very windy and cold conditions.

The weather failed to deter Rex Williams, Lyn Brodie and Bruce Brodie as the trio took out the title for 2022 ahead of runners-up Maria Hunter, Peter Starick and Ron Hunter.

On Friday, the Division 1 Red side will play



Mixed Triples runners-up Ron Hunter, Peter Starick and Maria Hunter.

Division 1 Blue in the Women's Pennant.

This Saturday will see Penola's Open Division 1 team travel to Mount Gambier Blue, while the Division 3 sides will play at home.

South will host Mount Gambier Blue and North will take on Naracoorte RSL.

Next Wednesday will see the Women's Vonnie O'Dowd Memorial Championship

A Grade contested.

Women's Division 1 Red team: Umpire Kaye Batt (s) C. Skeer, L. Copping, W. Lowe, M. Hinze (s) Manager G. Williams, N. Wallace and K. Fennell. Duty Rink.

Women's Division 1 Blue team: M. Hunter (s) J. Rogers, Manager H. Lambert, S. McShane, K. Brooks (s) S. Lamont, K. Wetherall and G. Hetherington. Reserves M. Hanel and J. Carlin.

Open Division 1 Pennant team: P. Thompson (s) I. Hetherington, R. Gibbs, J. Davidson, J. Robbie (s) Ken Batt, M. Devereux, Manager N. Vaughan, S. Degenhardt (s) R. Williams, Kaye Batt and B. Devereux.

Open Division 3 South Pennant team: D. Kilsby (s) L. Brodie, N. Wallace, B. Brodie, Duty Rink, P. Starick, Manager T. Robbie, S. Bawden, K. Fennell, K. Tink (s) G. Hetherington, W. Lowe and J. Carlin.

Open Division 3 North W. Wachtel (s) M. Hanel, R. Hunter, C. Larkin, G. Wachtel (s) M. Hunter, Umpire E. Brooks, R. Coote, Manager K. Brooks (s) J. Rogers, D. Messenger and H. Hoad.

Mixed results for Robe in social and pennant games

Robe Community Bank Corporate bowls attracted 12 teams last week, with four teams finishing on 16 points.

The SeaVu team of Cathy Cheung, Sally and Russell Vorwerk, and Haiden Smith claimed the win with six shots up, ahead of Robe Primary School with five shots up.

Robe Pharmacy finished third with four shots up, while in fourth was Loophole, two shots up.

Toucher prizes were awarded to Stacey, Shaye, Sandra, Glenn and Forbsey.

Wrong bias prizes were awarded to Helen, Sovie and Warren.

Helen Tucker was awarded a prize for her great drive.

The Foodland meat tray was won by Matt Austin, the beer by Luke Wise and wine by Lou Grimsell and Sharon Pettitt.

Social bowls Thursday saw three visitors from Donvale Victoria and McKay Queensland joining the Robe members.

There were two two-game winners.

Rob Lawrie, Vic Dawson and Cathy Brewin claimed the win with 55 points, ahead of Ross Denning and Jim Gray with 52.

Friday Pennant bowls saw the Division 2 women travel to Naracoorte RSL and Division 3 to Mount Gambier RSL, with both teams having a loss.

However, in Division 2, Judy Bermingham's rink claimed an eight to get them over the line on their rink.

Overall in Division 2, Naracoorte RSL 55 shots 6 points defeated Robe 38/2.

Ross Denning, Lorraine Denning, Barbara Brown and Tracey Gray were defeated by Lindy Mark's team 32-10, while Rob Lawrie, Pam Robinson, Helen Dawson and Judy Bermingham defeated Maree Neilson's team 28-23.

In Division 3 Mount Gambier RSL 65/8 defeated Robe 41/0.



Winners, Cathy Cheung, Sally and Russell Vorwerk, and Haiden Smith.

Picture: SUBMITTED

Carolyn McCusker, Maria Cooper, Kerry Pedlar and Helen Lynch were defeated by Shirley McIntyre's team 26/23 and Judy Phillips, Clare deLaine, Robbie Dahler and Valma Jennings were defeated by Lyn Chigwin's team 39-18.

Divisions 1 and 2 Open Pennant had a home-ground advantage last week.

Division 1 Robe 79/10 defeated Mount Gambier Red 56/2.

Errol Jennings, Dean Woodward, Dean

Burgoyne and Stephen Kennett were defeated by Greg Carpender's team 23/30.

Pat Lynch, Mark Murphy, David Robinson and Harold Manton defeated Jeff England's team 30/13.

Josh Waddell, Peter Gregory, Peter Roachock and Glenn Wright defeated Tony Renzi's team 26/13.

Division 2 Robe 57/2 were defeated by Mount Gambier 81/10.

Trevor Wagner, Vic Dawson, Ross Denning

and Gordon Brown were defeated by Mark McDonald's team 9/35.

Jim Gray, Paul Truelove, Jo Sykes and Ken Smith defeated Leanne Hentschke's team 27/19.

Rob Lawrie, Barry Bennett, Peter deLaine and Adrian Bermingham were defeated by Ron Cox's team 21/27.

Robe's Bowling Arm Tournament was cancelled Monday due to weather, with the hope to reschedule.



Sebella Coghlan takes an impressive mark during Hatherleigh’s dominant win over South Gambier on Friday night.

Too hot to handle

By James Murphy

HATHERLEIGH 6.7 (43) d SOUTH GAMBIER 0.1 (1)

A Hatherleigh win was expected, but it does not take the sting away for South Gambier as it suffered a 42-point defeat at the hands of the Eagles in Friday night’s Round 7 girls’ football clash.

Despite the home-ground advantage, the Demons were unable to keep up with the pace of their guests, with a behind in the second quarter their only score of the match.

On the other hand the Eagles had amassed three goals and two minor scores by half time to lead by 19 at the long break.

Holding South scoreless from there, they suffered with some inaccuracies in the third term to register four behinds.

However, a big finale in the fourth rewarded Hatherleigh with three goals to set up another percentage-boosting win for the ladder leaders.

Off the back of a four-goal game the week before, Niah Faulkner took things a step further in front of the big sticks.

She finished with five majors and the best-



Tap: Kongorong’s Becky Duivenvoorde gets a tap away during Round 7 of Under 16 girls’ football. Pictures: LACHLAN ONIONS

on-ground honours, while the only other goal scorer was Amber Chester, who was named second best for the game.

Kalli Nettle, Kalani Dunn and Eva Crowe also impressed for the Eagles, while for South it was the usual suspects in Ella Guest and

Jarrah Altschwager who stood their ground against the onslaught.

The win extends the hold Hatherleigh has on top spot, with a two-win buffer down to North Gambier in second.

The Demons remain in third with two wins for the season.

KYBYBOLITE 2.4 (16) d KONGORONG 1.2 (8) The bottom-order battle between Kybybolite and Kongorong saw the former record its first win of the 2022 Under 16 girls’ football season.

Played as the later game at Blue Lake Sports Park on Friday night, the northern Tigers found the big sticks on two occasions, which was enough to hold the reigning premiers at bay.

The Hawks managed just one major for the match, off the boot of Kyla Gordon.

Gordon earned a place in the best players, while it was Jasmin McKinnon who received the best-on-ground honours for the Hawks.

Lilly Gordon, Becky Duivenvoorde and Lacey Hannaford also earned a mention for Kongorong.

No details were available for Kybybolite at the time of print.

Keen anglers, wild weather

By Jamie Coates

Would you believe we are only a week out from summer?

Wind, rain, freezing temperatures – we have had it all.

There is a bit of relief on the horizon – we do have a forecast that seems to be improving, so that is something to look forward to.

The offshore news this week has been a bit light on, but the weather has played a big part in that.

A few boats did head out late last week when we did have some fishable weather and there was no shortage of gummy sharks and reef species, such as snapper, morwong and nannygai.

We have not heard anymore tuna reports for a couple of weeks now from anywhere along the coast, so it might be all she wrote.

It will not be long though until we hear the school tuna have popped up at the Coorong and Victor Harbour, then the run and chaos will all start again.

There have been a few opting for the surf over the last week while the weather has been a bit iffy and with some excellent results reported, I can see it becoming a regular thing.

Snapper have been high on the hit list for most, with plenty of fish beached and some real beauties around that 70cm mark, plus a couple even bigger.

There have been a few shark around this week for the surf fishos.

Jack Bell and crew managed four nice gummies to 10kg and a mulloway too at the back of Millicent late last week.

I have heard of shark from the Discovery Beach area over the last few days, with gummies being the flavour down there too.

There have been a few nice salmon caught this week – the weather has probably tricked them into thinking it is winter again.

Fish to a couple of kilos were caught through Canunda and the Beachport Salmon Hole and I am sure Cape Banks would produce while the weather is like this.

Whiting fishos have enjoyed the stir over the last week or so.

After a while the sea can get a bit too clean without a good whip up, so this last week will have been a delight.

The whiting has been outstanding yet again this week. There have been catches from both the land-based and boat-going anglers reported and as per the last few weeks, the size has remained impressive.

Inside the Port MacDonnell breakwater has been fairly reliable for most anglers and if the weather does look a bit dodgy, it is usually still safely fishable.

The land-based guys are still fishing Nene Valley and Carpenter Rocks, but the wind has been the big deciding factor in both those areas.

I have not heard from the weekend if the garfish were still on the chew, but prior to that the numbers were still good.

Until next week, safe fishing.



Jack Bell with a tasty reward.

Picture: SUBMITTED

Lucindale wins a thriller

LUCINDALE WOMBATS 13-128 d NARACOORTE 11-106

In Round 5 of the Southern Ports Tennis association, only one match was played with others cancelled due to the weather.

The mixed doubles set the scene for the day as Lucindale’s top two teams both claimed 6-1 victories.

In other clashes, the Wombats’ Mitchell Baker and Brittany Voss defeated Stephen Biggins and Jen Malone in a tie-break, while Naracoorte’s Katelyn Baker and Logan Smith defeated Sam Crocker and Bronwyn Longbottom 7-5.

In the singles, the Wombats again showed their dominance at the top as Chandler Smart claimed a 6-3 win over Dan Menzel to continue her impressive form.

Eliza Handbury and Tom Handbury both claimed wins in their singles clashes, while strong performances from Voss, Mitch Baker and Trevor Smart helped the Wombats streak ahead.

Wins from Will Malone, Smith, Albert Mann and Alix Mosey helped Naracoorte reduce the deficit.

Office-mates became rivals when Katelyn Baker defeated Longbottom 6-1 and in his first senior match, Max Lush showed his potential with an impressive win over Micaela Lock.

With the score at 10-8 Naracoorte looked

to win the early doubles clashes to claw back the margin but the Wombats had other plans as they claimed two wins in the top clashes.

The Naracoorte women reduced the margin with 9-5 and 9-6 wins.

Smith and Mann kept the dream alive with a marathon 10-8 win over Longbottom and Crocker.

The match went down to the final doubles set, where all eyes were on Lucindale’s Mitchell Baker and Trevor Smart and Naracoorte’s Biggins and Norbert Wende.

Lucindale led 12 sets to 11 and withstood the pressure to claim a 9-2 win in the final set to seal the victory.

Lucindale’s Chandler Smart, Mitchell Baker, Trevor Smart, Eliza Handbury, Tom Handbury and Voss all won three sets, while Smith, Mann, Katelyn Baker and Lush won three sets for Naracoorte.

Round 6 will see tennis return across the Limestone Coast if the weather does not intervene.

Beachport will host the Lucindale Cockatoos, the Robe Roosters will travel to Kingston, while the Rebels will host the competition-leading Wombats.

Elsewhere, Penola will play its second home game of the season when it plays host to the Koalas and the match of the round will be the clash between Naracoorte and Frances-Lucindale.



Max Lush made his senior debut for Naracoorte in Round 6 of the Southern Ports Tennis Association.

Picture: SUBMITTED



Under 12 Girls Division 1 winner.



Under 12 Girls Division 3 winners.

Solid effort from Magic

The Mount Gambier Junior Basketball tournament was held over the weekend, with Millicent Magic submitting 12 teams.

At the end of the tournament Millicent had chalked up several grand final victories across various age groups.

The Under 12 Division 1 girls claimed the overall honours after a strong display across the weekend.

Coached by Lillie Paul and Olivia Dean, the young Magic girls kicked off their tournament with an unfortunate 27-16 loss against eventual grand final opponent Hamilton.

From there they turned their fortunes around with a 48-17 win over Strathalbyn, a 27-18 win over Riverland and a dominant 32-3 victory against Bordertown to book a grand final berth.

The Millicent girls came into the final ready to turn the tables on Hamilton after their loss earlier in the weekend.

Both teams applied strong defensive pressure, which made it difficult for either team to get up on the scoreboard.

Asha Dinnison found the first Millicent score of the game late in the first term, with the Magic down by one point at the first break.

The defensive pressure and physicality made it challenging for Hamilton to score in the second and third quarters and with many crucial turnovers, Millicent was able to build a four-point margin by the final break.

With 30 seconds remaining in the game the Magic girls were up by one point and managed to control the game to take a close 12-11 victory.

The Under 16 Division 3 girls also claimed their title, after a dominant display across the weekend.

The Magic won their opening clash 32-2 against Port Fairy, 26-22 against Keith, 34-7 over Strathalbyn, then a 40-5 win over Port Fairy in the semi-final round.

Keith again put up a fight, with Millicent having to work hard for the 21-17 grand final victory.

The Under 12 Division 3 girls chalked up their grand final victory after some tough tussles throughout the weekend.

They opened their weekend with a 26-25 win over Hamilton, before another nail-biting 19-18 victory against Keith.

From there they hit their straps against Casterton, with a strong 32-12 win to secure a semi-final clash with Mount Gambier.

Millicent was too strong in that one, with a 23-13 result, which set up a grand final against Keith.

After the earlier tight result another excit-



Under 16 Girls Division 3 winner.

Pictures: SUBMITTED

ing game was expected.

While Keith fought hard, the Magic girls continued with their solid form and claimed a 23-15 victory for the title.

The Under 18 Division 1 boys had to work hard to reach their grand final, with a draw against Mount Gambier to open proceedings.

A hard-fought 51-42 victory over Murray Bridge followed, before a 44-41 loss to Portland.

They then bounced back with a 58-35 victory over Riverland, before a 58-38 win over Warrnambool to set up a grand final clash

with Mount Gambier.

The Magic boys saved their best performance for the last game of the weekend.

Led by the talented duo of Jackson Bowden and Jack Haggett it was an explosive start by Millicent.

The Magic boys found their range outside the three-point arc, with a 22-3 opening term leaving the Lakers a little shell shocked.

Cade Kelly was impressive in the fast start, while Jackson Dean was solid in defence.

Millicent did not back off for the entire

game and in the end chalked up a comfortable 59-34 victory for the title.

Bowden finished the game with 19 points, Kelly with 18 and Haggett chipped in for 16.

The Under 16 Division 1 girls enjoyed a flawless weekend leading into the grand final, with a couple of close games, namely a 30-29 win over Strathalbyn and a 34-30 victory over Naracoorte.

Despite defeating Riverland 47-33 in their opening clash, the Magic eventually went down to the same side in the grand final with a disappointing 36-33 loss



Niah Faulkner makes a pass during the Under 18 Division 1 clash with the Lakers.



Maya Tarrant searches for an option in attack.



Under 16 boy Leigh Richards drives the ball down the court against Naracoorte in the weekend's Mount Gambier Junior Basketball Tournament.



Millicent's Beau Douglas takes a shot under pressure in the Under 16 boys Division 1 competition.

Mount Gambier juniors



Oliver Braun takes possession in the Magic's Under 16 boys Division 1 clash against Naracoorte.



Millicent Under 18 girl Poppy Venn fights towards the hoop against Mount Gambier in their Division 1 clash.
Pictures: JAMES MURPHY



Edie Easterby passes off.



Lillie Paul takes a run down the court in Millicent's thrilling Under 18 girls Division 1 clash with Mount Gambier.

There will be plenty of attention on this game as it is a grand final rematch from last year, where the Eagles reached the holy grail.

The Bulldogs head into this contest off the back of an abandoned game against the Roos

However, after the limited amount of games played this season, it is already clear that both of these sides possess the strength to compete in finals and a winner is anyone's guess.



Hopes for weather to hold

By James Murphy

The weekend's wet and wild weather played havoc on the Millicent and Naracoorte Cricket Association, with all Round 5 matches abandoned.

As such, the four scheduled fixtures were entered as no results, with players hopeful for finer conditions this weekend.

KINGSTON v RENDELSHAM

Looking at Round 6 and ladder leader Rendelsham will visit fifth-placed Kingston.

However, a good battle can be expected as despite the disparity in ladder placings, both sides have won two games for the season.

Kingston has played an extra game - due to two cancelled fixtures for Rendelsham - and sits in fifth with two wins and a loss.

Both sides will be eager to return to the pitch after a couple of abandoned rounds.

Rendelsham in particular will be itching to play, with its last completed match back in Round 2, where it defeated Robe.

That game saw Zach Jones (61 runs) and Ethan Bowman (24) lead with the bat and they will look for solid outings again.

For Kingston its last full game was in Round 3, which was a convincing loss to Naracoorte Townies.

It will chase a third win for the season and hope for some good inputs with bat and ball.

Craig Watson claimed four wickets in Round 2, while decent batting performances include captain Mathew Cridland's half-century in Round 1 and a 39-run haul from vice captain Callum Paige in Round 2.

Kingston will be eager to post another win, but Rendelsham is sure to put up a good fight.

LUCINDALE v FOOTBALLERS FURNER BEACHPORT

Lucindale and Footballers Furner Beachport will meet in Round 6 of Millicent Naracoorte Cricket on Saturday.

Both teams have a win each, with Lucindale's coming in Round 3 in convincing fashion against Robe.

Lucindale posted an unassailable 214-run total in the first innings, with opener Shane McGurk scoring 64 runs and captain Michael McGurk unbeaten on 67.

An even contribution with the ball saw four multiple wicket takers, which will be a weapon they hope to utilise again this round.

The Footballers' win also came in Round 3, which was the last completed round for all teams.

They accounted for Mount Burr, with some standout figures including Gerard McGrath's 62 runs and Jase Bateman's 3/9 with the ball.

The match sits as a bit of an unknown, but if Lucindale can put in another big batting return, the Footballers will have a tough task on their hands.



Millicent and Naracoorte cricketers will be hopeful to play this week, after two abandoned rounds due to wet weather.

Picture: LACHLAN ONIONS

MOUNT BURR v MILLICENT

Mount Burr will chase its first win of the Millicent and Naracoorte cricket season when it hosts Millicent on Saturday.

The Mozzies have lost three games and had two abandoned, while Millicent has one win and three cancelled games.

Millicent's last successful outing was against Naracoorte Warriors and resulted in a comfortable victory.

Just three wickets fell as the Saints chased down the Warriors' 78 runs, with captain Jaxon Cushion leading the charge with an unbeaten half-century.

He will be out to impress again, while Jacob Todd and Alex Wesolowski have proven efficient with the ball.

For Mount Burr, it has been well in the fight in all three of its completed games, but has been unable to claim the win.

Millicent will be favoured for victory, but the Mozzies will fight hard on their home turf.

NARACOORTE TOWNIES v NARACOORTE WARRIORS

The in-house battle between Naracoorte's Townies and Warriors teams will put bragging rights on the line this week.

While ladder placings are not much to go off at this stage - with as many games abandoned as played in 2022-23 - the Townies hold the advantage with two wins to Warriors' one.

After two week's of cancelled fixtures, the Townies will hope to impress with the ball as they did in Round 3 against Kingston.

They held their opposition to 70 runs thanks to a strong contribution from bowlers, which included three wickets to both Bredon Smart and Josh Bull.

That total was easily obtained after an unbeaten opening partnership between Matt Smith and Shoukat Ali, with 54 and 12 runs respectively.

For the Warriors, the only success from its two completed games came in Round 2 against bottom-placed Mount Burr.

Aaron Haines (24 runs) and Andrew Fitzgerald (23) were best with the bat, while Simon Cox's 3/9 was the best of the bowling efforts.

While the match could easily go either way, the Townies looked to be the favourite heading into the one-day clash.

Good rounds by grade winners in ladies' golf

A field of 20 women contested a stableford round at the Millicent Golf Club last week.

Played in overcast conditions with light rain, it was Val Williams who topped A Grade with a card of 37 points.

Kathy Webber finished runner-up for the grade after a countback on 35, while in B Grade an equal day-high of 37 points earned Sue Ireland the win.

She was closely followed by Debbie Tincknell with 36 points.

Ball winners on the day were Karen Lock, Lois Tilley and Mardi Sunderland, with the nine-hole competition won by Ireland with 22 points.

Nearest-the-pins were claimed by Webber on the third hole, Tincknell for the second shot to the 17th and Tilley for the second shot on the fifth.

Following the round, formalities were held for member Glennis Skeer to celebrate her 80th birthday.



Glennis Skeer celebrated her 80th birthday at the Millicent Golf Club last week.



A Grade runner-up Kathy Webber and winner Val Williams with B Grade winner Sue Ireland and runner-up Debbie Tincknell.



Big names join the Eagles

By Lachlan Onions

Western Border Football League medallist Jayden Eldridge and former Penola premier-ship player Matt Ferguson will join the Eagles for 2023.

The duo were both members of the East Gambier A Grade side last season.

The signing of Eldridge is one of the biggest acquisitions in the South East this off-season and the 2022 WBFL medal winner brings a wealth of experience and quality to Penola.

He has spent the last two-seasons as a co-coach of the Bulldogs and will be a major asset for the Eagles.

Along with the league medal, Eldridge has won the best and fairest award at East Gambier on four occasions throughout his 268-game career with the club.

He was also a key part of the Bulldogs' 2017 drought-breaking premiership and was a consistent figure last season - named amongst his side's best players in 11 of his 16 games.

Penola coach Brad Maney was thrilled to bring Eldridge to the club for next season.

"We are absolutely over the moon and we were just thankful he was willing to give us the time to present to him and have the discussion around where we think his football can improve in the Kowree Naracoorte Tatiara Football League," he said.

"Jayden is a fantastic footballer - he's played football at the highest level he can in country football."

Maney said Eldridge's level of experience is going to be crucial for Penola and will help the team take the next step forward.

"He (Eldridge) plays probably his best football across halfback but he will obviously have bursts in the midfield as well," Maney said.

Eldridge will look to form what could prove to be a lethal partnership at halfback with Brad Bryant - who was named in the team of the carnival in this year's SA Country Championships.

"Him (Eldridge) and Brad Bryant are very similar footballers, so we will be looking forward to using a rotation there," Maney said.

Maney said he with the way his side plays,



Jayden Eldridge will join Penola in 2023.

he hopes Eldridge will find himself in the front-half of the field for most of the game.

Along with Eldridge, Ferguson will also



Former Penola premiership player Matt Ferguson will return to the Eagles in 2023.

Both players have played at Interleague level, while Eldridge has also played for Murray South East at the SA Country Championships and even represented South Australia in 2019.

Ferguson has played 196 games in his career, 88 of which were in Penola colours.

"He (Ferguson) is a beloved figure in our club and community," Maney said.

"He's a two-time premiership player and he's one of those people who brings a really good vibe and he's just a good person to have around."

"He is very flexible to have as a utility on the field ... I think his best football is still in front of him."

The duo will join Tom Williams, Brodie Foster and Jordan Galpin as off-season recruits in what has been a busy period for the blue and white.

"I think we have a base-level culture of a place where people now want to play football and understand where we are heading as a club," Maney said.

He said everyone who has been recruited this off-season can see the vision for the club and while he believes these players will bring more success to the club, he is still focused on the process.

"We are going to have a huge pre-season and we have a goal of trying to be the fittest team in the KNT come Round 1," Maney said.

"That is what I'm focused on at the moment."

Pictures: JAMES MURPHY

Penola cruises to victory

By Lachlan Onions

PENOLA 4/127 d MIL LEL 10/79

An impressive 94-run fourth-wicket partnership from Drew Clayfield and Lewis March was enough to see Penola claim victory over Mil Lel on Day 2 in Round 4 of the Barber Shield.

The Eagles resumed on Saturday at 3/38 and Clayfield led from the front with a captain's knock of 57 to see his side through.

In overcast conditions and a wet outfield, Mil Lel was still in the contest as play began at Frew Park on Saturday afternoon, but March and Clayfield held firm to diminish the hopes of the hosts.

Clayfield kept the runs flowing with his 57 coming off 89 balls, while March was an immovable object at the other end and finished the day unbeaten on 36 off 104 balls.

The home side was unable to take a wicket until the 26th over of the day and by that stage, the Eagles had already surpassed Mil Lel's first innings total.

Clayfield was the only wicket to fall on the day which was affected by rain and saw less than 30 overs completed.

Nick Walters ended the game with the best bowling figures for the hosts with 2/25



Drew Clayfield slashes a shot through point during Penola's win in Round 4 of the Barber Shield on Saturday.

Pictures: LACHLAN ONIONS

off 11 overs.

He was supported by Logan Gibbs and Jack Miller, who both picked up a wicket each.

The reigning premiers entered this clash winless in the shield but a strong performance with the ball on Day 1 helped the visitors seal the victory.

Lachy Jones and Josh Doyle led the way with the ball for the Eagles with seven wickets between them and provided the platform for the batters to finish the job.



Lewis March looks to work a ball though the on-side.